

APP CRS	Rwy Idg	<b>4440</b>
<b>146°</b>	TDZE	<b>721</b>
	Apt Elev	<b>742</b>

# RNAV (GPS) RWY 15

KENOSHA RGNL (ENW)

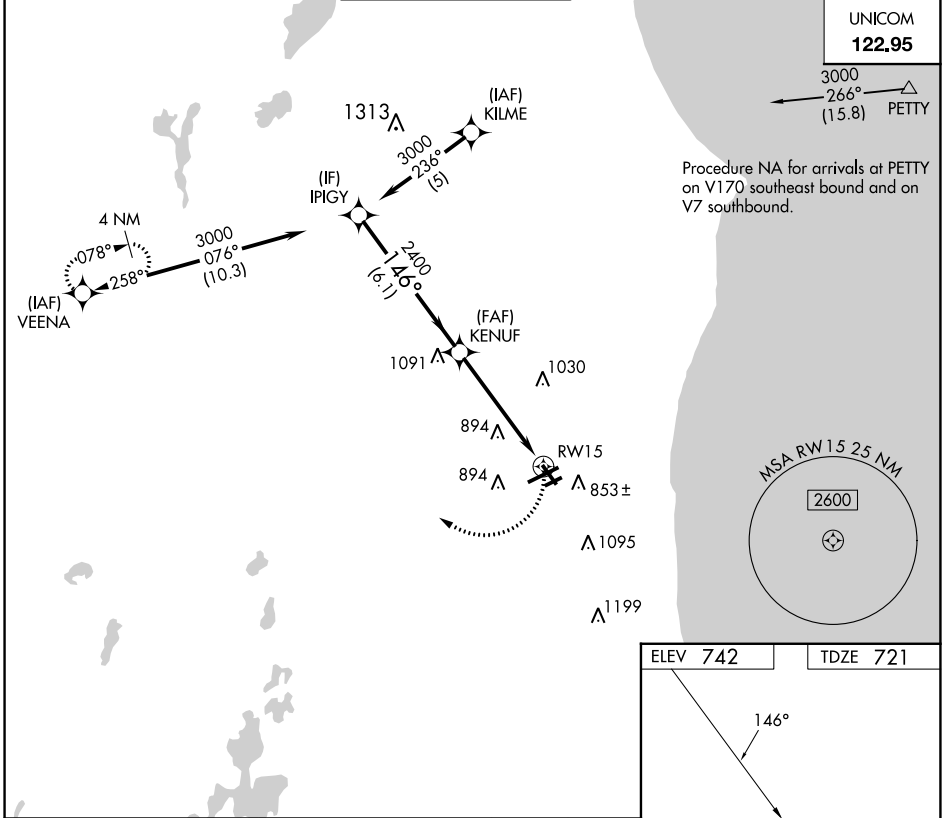
RNP APCH.

**▼** Rwy 15 helicopter visibility reduction below 1 SM NA. Straight-In and **▲** Circling Rwy 15 NA at night, Circling Rwy 7R NA at night.

**MISSED APPROACH:**  
Climbing right turn to 3000  
direct VEENA and hold.

ATIS <b>127.175</b>	MILWAUKEE APP CON <b>135.875 317.725</b>	KENOSHA TOWER * <b>118.6 (CTAF) 0 353.6</b>	GND CON <b>121.875</b>	CLNC DEL <b>121.875</b>	CLNC DEL <b>118.6</b> (When twr closed)
------------------------	---	--	---------------------------	----------------------------	---

UNICOM  
**122.95**



Procedure NA for arrivals at PETTY on V170 southeast bound and on V7 southbound.

EC-3, 18 APR 2024 to 16 MAY 2024

EC-3, 18 APR 2024 to 16 MAY 2024

ELEV 742	TDZE 721
----------	----------

MIRL Rwy 7R-25L **0**  
HIRL Rwys 7L-25R and 15-33 **0**  
REIL Rwy 25R **0**

Visual Segment - Obstacles.			
IPIGY	KENUF	3000	VEENA
3000	2400		
6.1 NM		5.1 NM	
CATEGORY	A	B	C
LNVA MDA	1200-1	479 (500-1)	1200-1 3/8 479 (500-1 3/8)
CIRCLING	1200-1 458 (500-1)	1340-1 598 (600-1)	1400-1 3/4 658 (700-1 3/4)