


WAAS CH 90423 W05A	APP CRS 054°	Rwy Idg TDZE 216 Apt Elev 216	6503
----------------------------------------	------------------------	---------------------------------------------------	-------------

RNAV (GPS) RWY 5

LAURINBURG/MAXTON (MEB)

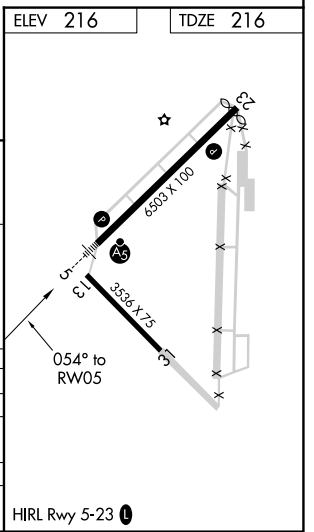
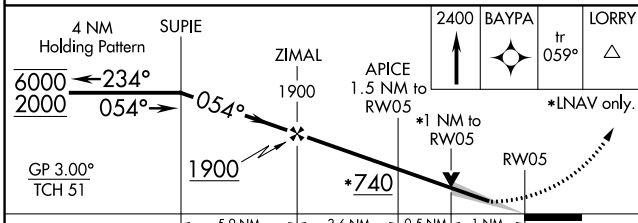
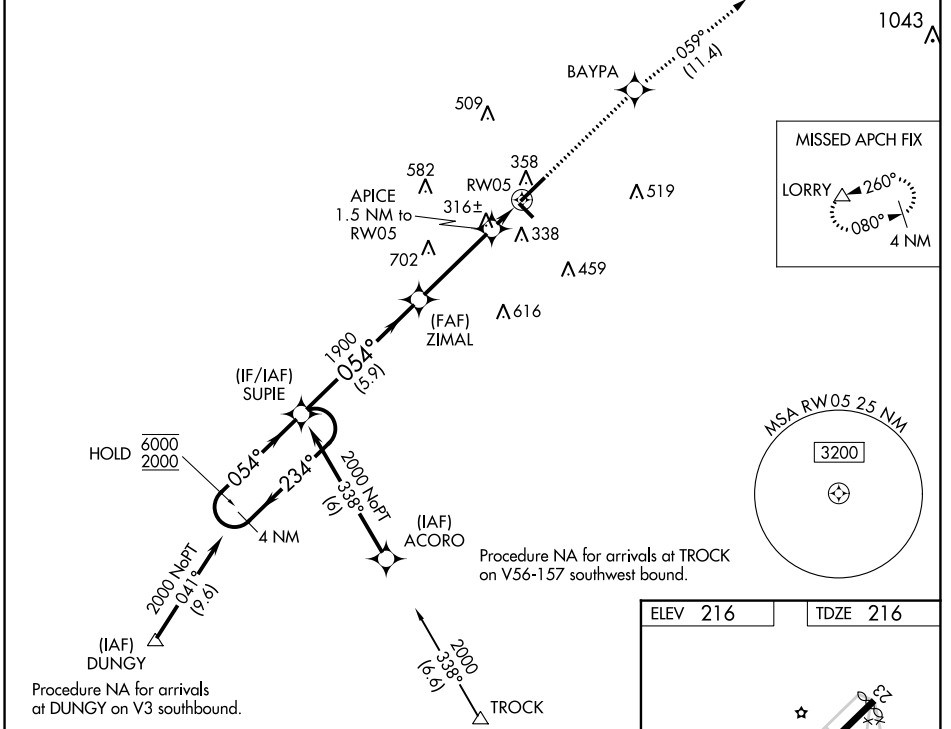
RNP APCH.

⚠ Circling to Rwy 13 and 31 NA at night. For uncompensated Baro-VNAV systems, LNAV/VNAV NA below -15°C or above 42°C. For inop ALS, increase LNAV/VNAV all Cats visibility to ¼ SM, and LNAV Cat C/D visibility to 1 SM.

MALSRS 

MISSED APPROACH: Climb to 2400 direct BAYPA and on track 059° to LORRY and hold.

ASOS 134.125	FAYETTEVILLE APP CON 127.8 343.725	GCO 135.075	UNICOM 122.8 (CTAF) 0
------------------------	----------------------------------------------	-----------------------	---------------------------------



CATEGORY	A	B	C	D
LPV DA		416-½	200 (200-½)	
LNAV/VNAV DA		472-½	256 (300-½)	
LNAV MDA	580-½	364 (400-½)	580-⅝	364 (400-⅝)
C CIRCLING	740-1	524 (600-1)	780-1½ 564 (600-1½)	1020-2½ 804 (900-2½)

SE-2, 18 APR 2024 to 16 MAY 2024

SE-2, 18 APR 2024 to 16 MAY 2024