

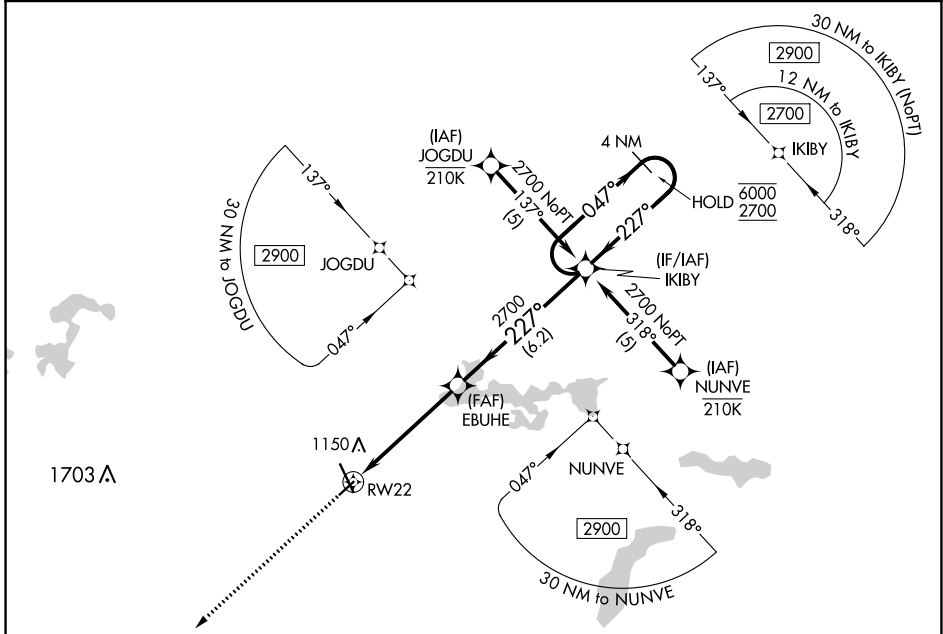
APP CRS	Rwy Idg	<b>4000</b>
<b>227°</b>	TDZE	<b>1021</b>
	Apt Elev	<b>1021</b>

# RNAV (GPS) RWY 22

MANKATO RGNL (MKT)

RNP APCH - GPS.	MISSED APPROACH: Climb to 2700 direct KABGE and hold.
<p>Rwy 22 helicopter visibility reduction below 1 SM NA.</p>	

AWOS-3PT <b>118.175</b>	MINNEAPOLIS CENTER <b>135.0 306.9</b>	UNICOM <b>122.725 (CTAF) 0</b>
----------------------------	------------------------------------------	-----------------------------------



NC-1, 18 APR 2024 to 16 MAY 2024

NC-1, 18 APR 2024 to 16 MAY 2024

	ELEV 1021	TDZE 1021	
--	-----------	-----------	--

↑ 2700

VGSI and descent angles not coincident  
 (VGSI Angle 3.00/TCH 26).

EBUHE

1.6 NM to RW22

3.5 NM

1.6 NM

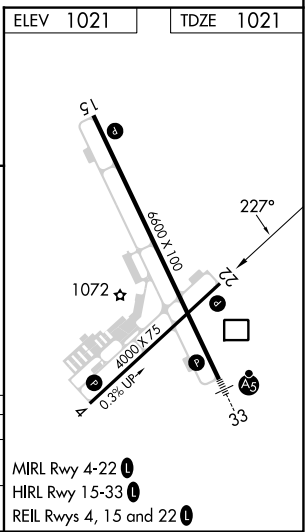
IKIBY

4 NM Holding Pattern

6.2 NM

≤ 3.04° TCH 40

CATEGORY	A	B	C	D
LNVA MDA	1560-1	539 (600-1)	1560-1½ 539 (600-1½)	NA
CIRCLING	1560-1	539 (600-1)	1600-1½ 579 (600-1½)	NA



MIRL Rwy 4-22

HIRL Rwy 15-33

REIL Rws 4, 15 and 22