

GARLAND FIVE DEPARTURE

SC-2, 18 APR 2024 to 16 MAY 2024

REGIONAL DEP CON
125.2 343.65
CTAF
122.7

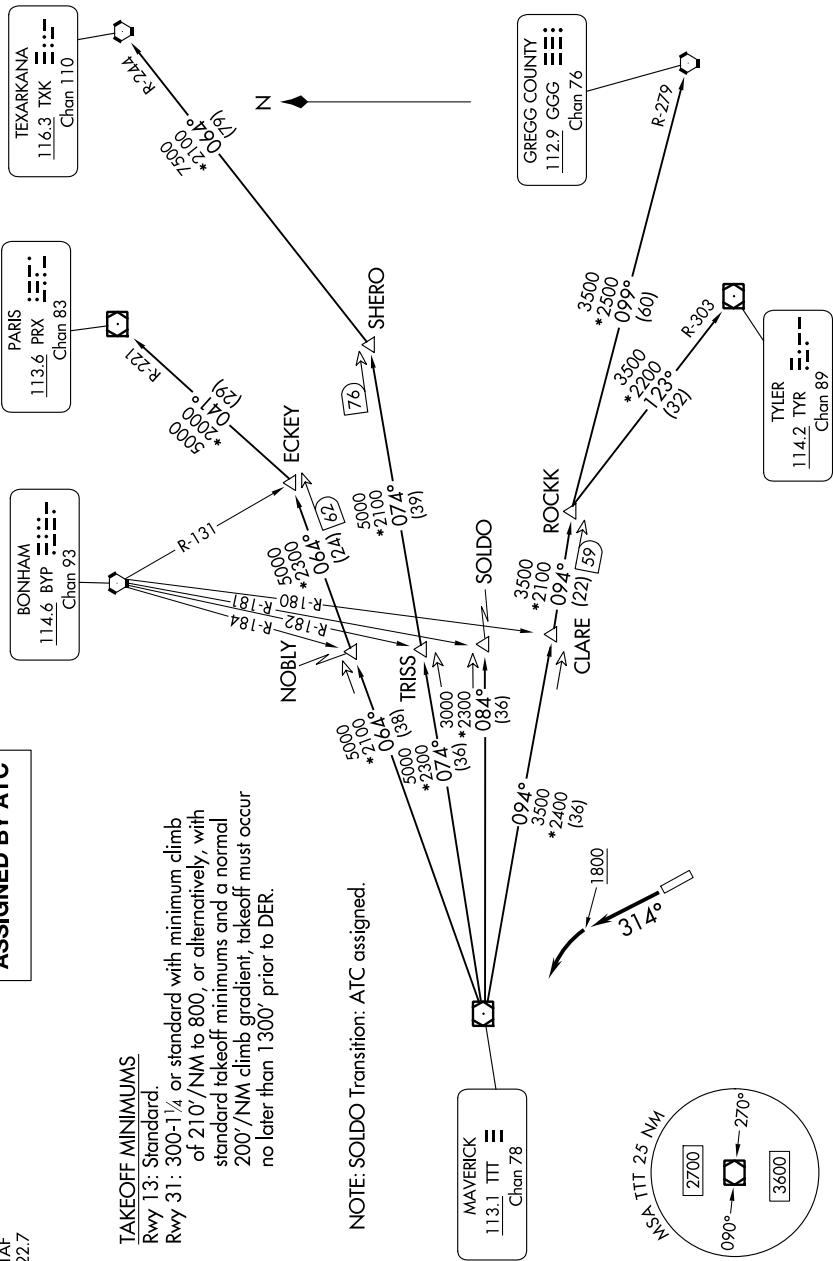
**TOP ALTITUDE:
ASSIGNED BY ATC**

RADAR and DME required.

TAKEOFF MINIMUMS

Rwy 13: Standard.
Rwy 31: 300-1 1/2 or standard with minimum climb of 210'/NM to 800, or alternatively, with standard takeoff minimums and a normal 200'/NM climb gradient, takeoff must occur no later than 1300' prior to DER.

NOTE: SOLDO Transition: ATC assigned.



(CONTINUED ON FOLLOWING PAGE)

SC-2, 18 APR 2024 to 16 MAY 2024

NOTE: Chart not to scale.