

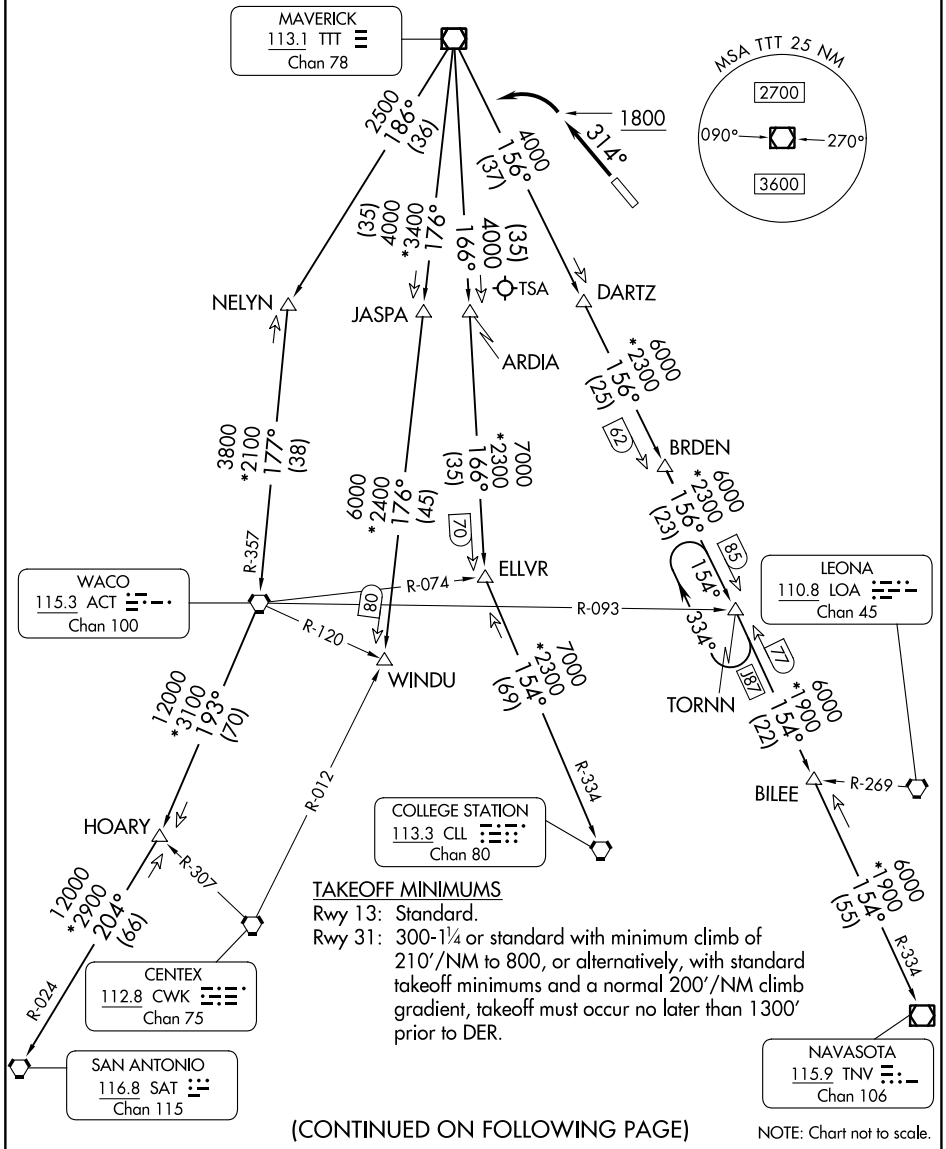
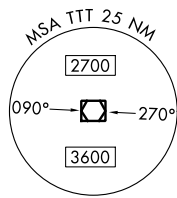
# JOE POOL SEVEN DEPARTURE

REGIONAL DEP CON  
125.2 343.65  
CTAF  
122.7

RADAR and DME required.

**TOP ALTITUDE:  
ASSIGNED BY ATC**

MAVERICK  
113.1 TTT  
Chan 78



### TAKEOFF MINIMUMS

Rwy 13: Standard.

Rwy 31: 300-1/4 or standard with minimum climb of 210'/NM to 800, or alternatively, with standard takeoff minimums and a normal 200'/NM climb gradient, takeoff must occur no later than 1300' prior to DER.

(CONTINUED ON FOLLOWING PAGE)

NOTE: Chart not to scale.

SC-2, 18 APR 2024 to 16 MAY 2024

SC-2, 18 APR 2024 to 16 MAY 2024

# JOE POOL SEVEN DEPARTURE