

KUSSO ONE DEPARTURE (RNAV)

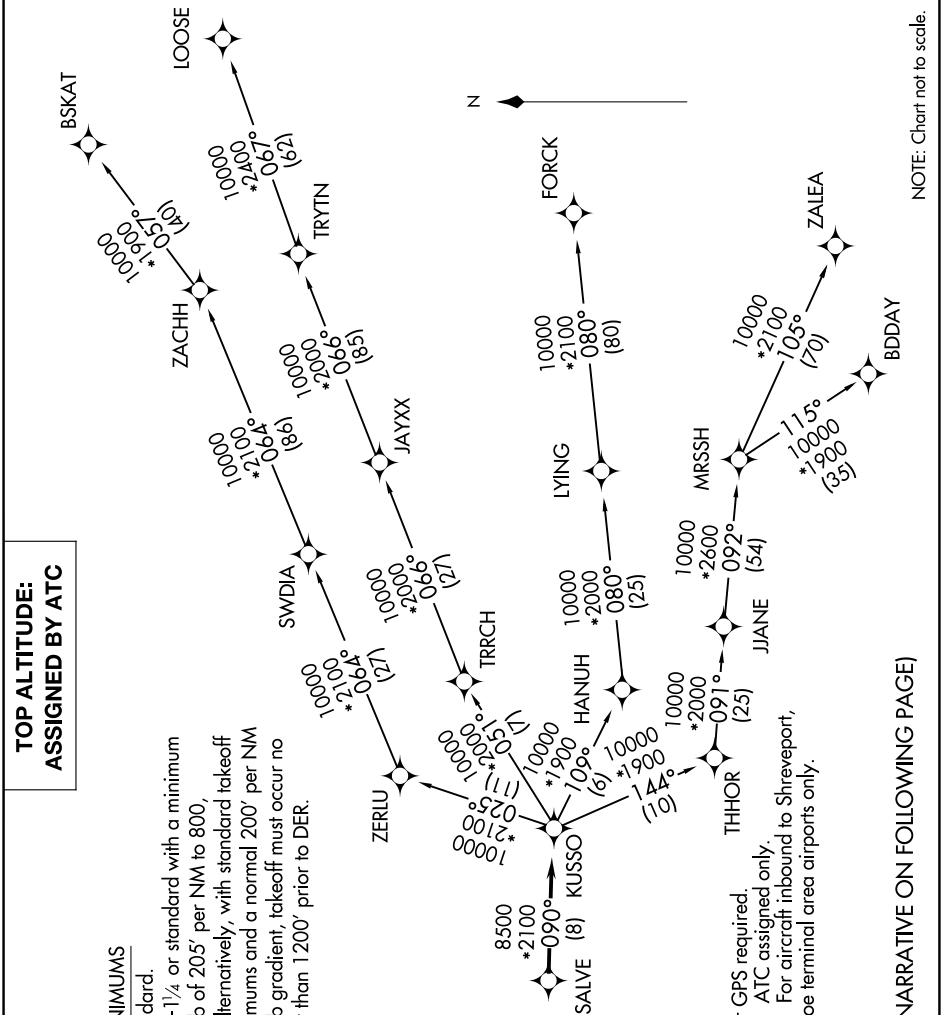
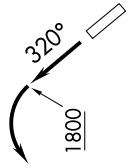
SC-2, 18 APR 2024 to 16 MAY 2024

**TOP ALTITUDE:
ASSIGNED BY ATC**

TAKEOFF MINIMUMS

Rwy 13: Standard.
 Rwy 31: 300-1/4 or standard with a minimum climb of 205' per NM to 800, or alternatively, with standard takeoff minimums and a normal 200' per NM climb gradient, takeoff must occur no later than 1 200' prior to DER.

CTAF
 122.7
 REGIONAL DEP CON
 125.2 343.65



NOTE: RADAR required.
 NOTE: RNAV 1.
 NOTE: DME/DME/IRU or GPS required.
 NOTE: BDDAY Transition: ATC assigned only.
 NOTE: MRSSH Transition: For aircraft inbound to Shreveport, Jackson and Monroe terminal area airports only.

(NARRATIVE ON FOLLOWING PAGE)

NOTE: Chart not to scale.

SC-2, 18 APR 2024 to 16 MAY 2024

KUSSO ONE DEPARTURE (RNAV)