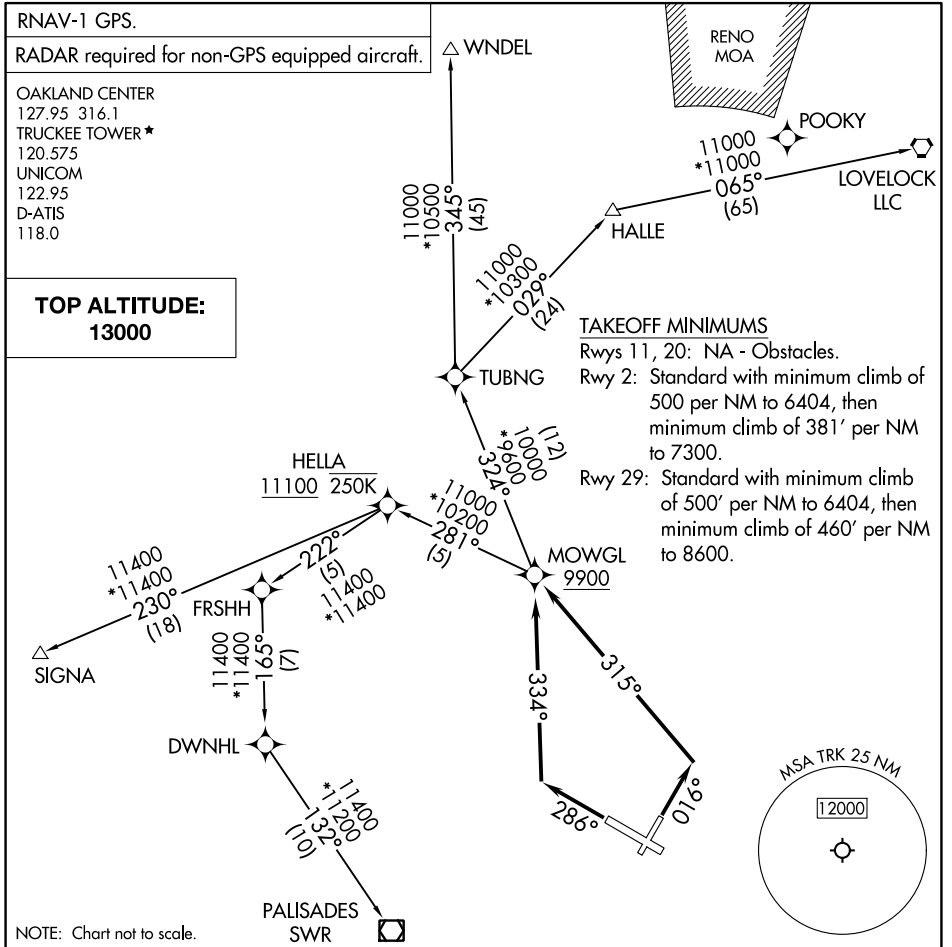


(MOWGL2.MOWGL) 23222

MOWGL TWO DEPARTURE (RNAV)

AL-6021 (FAA)

TRUCKEE-TAHOE (TRK)
TRUCKEE, CALIFORNIA



SW-2, 18 APR 2024 to 16 MAY 2024

SW-2, 18 APR 2024 to 16 MAY 2024

DEPARTURE ROUTE DESCRIPTION

TAKEOFF RUNWAY 2: Climb on heading 016° to intercept course 315° to cross MOWGL at or above 9900, thence. . . .

TAKEOFF RUNWAY 29: Climb on heading 286° to intercept course 334° to cross MOWGL at or above 9900, thence. . . .

. . . .(transition) maintain 13000 expect filed altitude 10 minutes after departure.

HALLE TRANSITION (MOWGL2.HALLE)
LOVELOCK TRANSITION (MOWGL2.LLC)
PALISADES TRANSITION (MOWGL2.SWR)
SIGNA TRANSITION (MOWGL2.SIGNA)
WNDL TRANSITION (MOWGL2.WNDL)

MOWGL TWO DEPARTURE (RNAV)
(MOWGL2.MOWGL) 10AUG23

TRUCKEE, CALIFORNIA
TRUCKEE-TAHOE (TRK)