

RNAV (GPS) RWY 11 TRUCKEE-TAHOE (TRK)

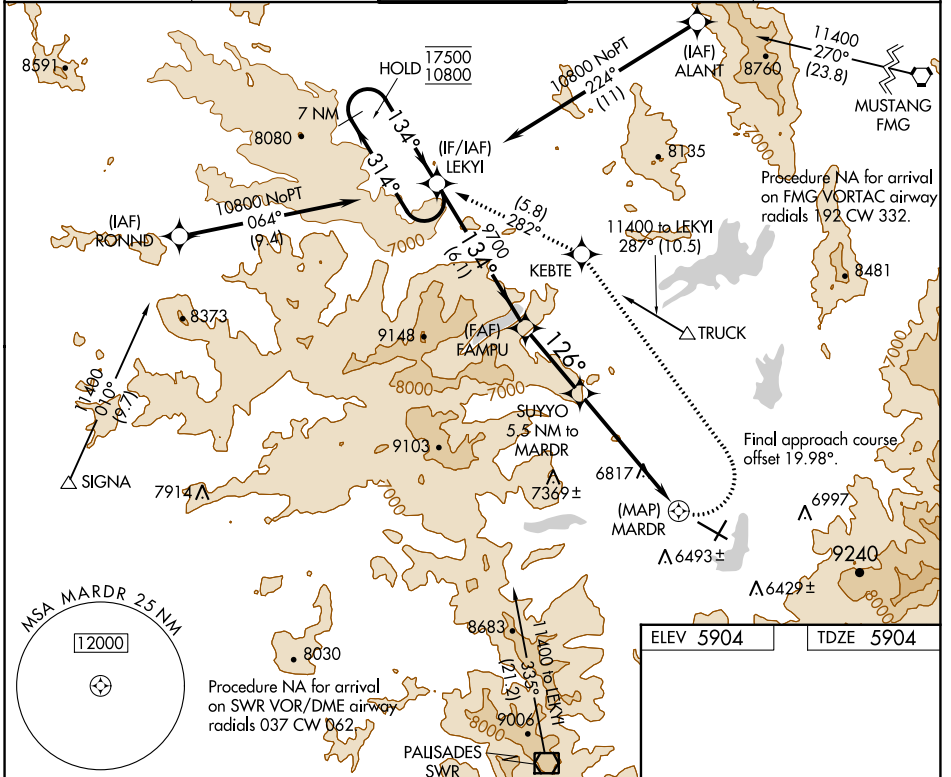
APP CRS 126°	Rwy Idg TDZE Apt Elev	7001 5904 5904
------------------------	-----------------------------	---

RNP APCH.

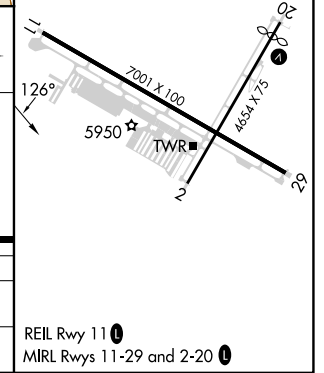
⚠ Circling NA for Cat C south of Rwy 29 and east of Rwy 2.
⚠ Procedure NA at night. Rwy 11 helicopter visibility reduction below 1 SM NA. When local altimeter setting not received, procedure NA.

MISSED APPROACH: (Do not exceed 220K until KEBTE) Climbing left turn to 12000 direct KEBTE and track 282° to LEKYI and hold, continue climb-in-hold 12000.

D-ATIS 118.0	OAKLAND CENTER 127.95 316.1	TRUCKEE TOWER * 120.575 (CTAF) 0	GND CON 118.3	UNICOM 122.95
------------------------	---------------------------------------	--	-------------------------	-------------------------



7 NM Holding Pattern	LEKYI	FAMPU	SUYYO	MARDR
17500 ← 314°	17500	9700	8480	8480
10800 → 134°	134°	3.77 NM TCH 40	5.5 NM to MARDR	0.8 NM
6.1 NM		3.1 NM		5.5 NM
CATEGORY	A	B	C	D
LNVA MDA	7720-1½ 1816 (1900-1½)	7720-1½ 1816 (1900-1½)	7720-3 1816 (1900-3)	NA
CIRCLING	7720-1½ 1816 (1900-1½)	7720-1½ 1816 (1900-1½)	7720-3 1816 (1900-3)	NA



SW-2, 18 APR 2024 to 16 MAY 2024

SW-2, 18 APR 2024 to 16 MAY 2024