


LOC/DME I-DJK <b>109.95</b> Chan <b>36</b> (Y)	APP CRS <b>022°</b>	Rwy Idg <b>7026</b> TDZE <b>913</b> Apt Elev <b>913</b>
--	------------------------	---

# ILS or LOC RWY 2

DE KALB TAYLOR MUNI (DKB)

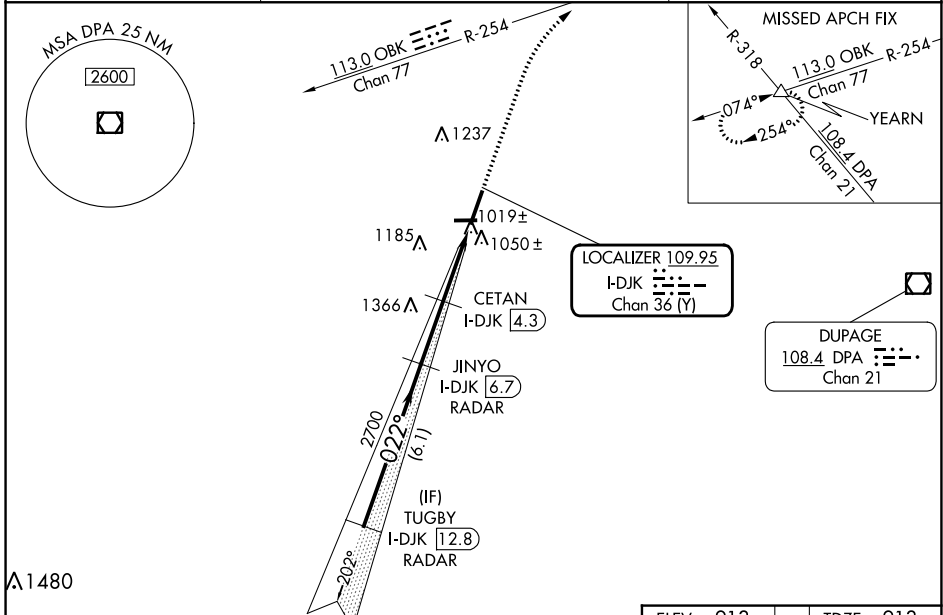
RADAR required for procedure entry. DME or RADAR required.

VDP NA with Aurora altimeter setting. When local altimeter setting not received, use Aurora altimeter setting and increase DA to 1174 feet and all MDA 80 feet; CETAN fix minimums increase Circling Cat C and D visibility 1/4 SM. For inop ALS, increase S-ILS 2 all Cats visibility to 3/8 SM. CETAN fix minimums: For inop ALS, increase S-LOC 2 Cat C and D visibility to 1 SM.

MALSRS 

MISSED APPROACH:  
Climb to 3000 on heading 022° and OBK VOR/DME R-254 to YEARN Inlt and hold.

AWOS-3 <b>119.075</b>	CHICAGO APP CON <b>133.5 349.0</b>	UNICOM <b>122.7</b> (CTAF) <b>0</b>
--------------------------	---------------------------------------	--



VGSI and ILS glidepath not coincident (VGSI Angle 3.00°/TCH 53).

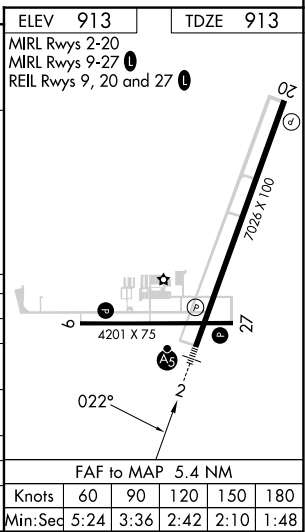
TUGBY I-DJK 12.8 RADAR	JINYO I-DJK 6.7 RADAR	CETAN I-DJK 4.3	I-DJK 2.4	I-DJK 1.3
2700	2700	1900		
GS 3.00° TCH 55	022°	022°		
6.1 NM	2.4 NM	1.9 NM	1.1 NM	

3000	OBK R-254	YEARN $\Delta$
hdg 022°		

CATEGORY	A	B	C	D
S-ILS 2	1113-1/2		200 (200-1/2)	
S-LOC 2	1900-3/4 987 (1000-3/4)	1900-1 987 (1000-1)	1900-2 1/2	987 (1000-2 1/2)
CIRCLING	1900-1 1/4 987 (1000-1 1/4)	1900-1 1/2 987 (1000-1 1/2)	1900-3	987 (1000-3)

CETAN FIX MINIMUMS (DME REQUIRED)

S-LOC 2	1280-1/2 367 (400-1/2)	1280-5/8 367 (400-5/8)		
CIRCLING	1360-1 447 (500-1)	1500-1 587 (600-1)	1600-2 687 (700-2)	1740-2 3/4 827 (900-2 3/4)



EC-3, 18 APR 2024 to 16 MAY 2024

EC-3, 18 APR 2024 to 16 MAY 2024