

| | | | |
|--|------------------------|-----------------------------|---|
| WAAS CH 50409 W20A | APP CRS 202° | Rwy Idg TDZE Apt Elev | 7026 905 913 |
|--|------------------------|-----------------------------|---|

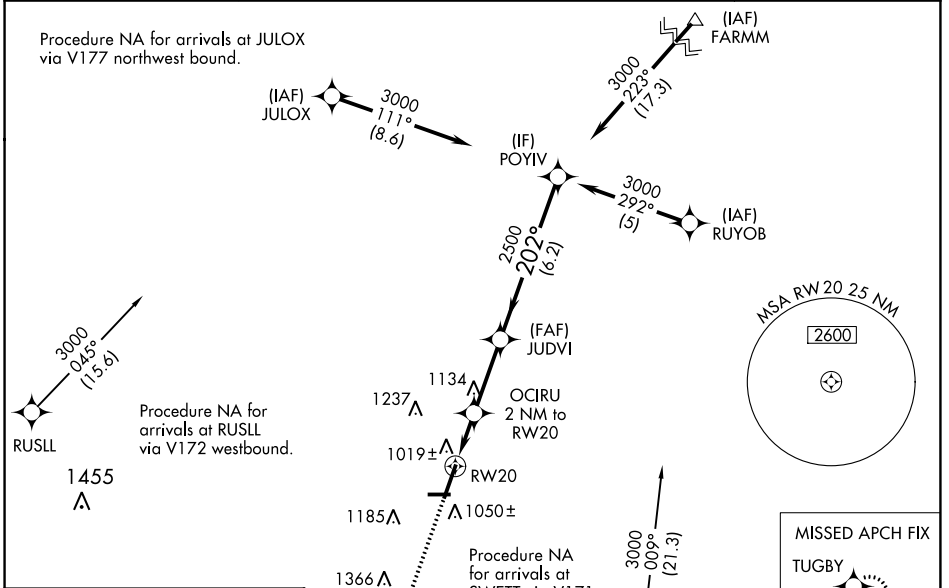
RNAV (GPS) RWY 20

DE KALB TAYLOR MUNI (DKB)

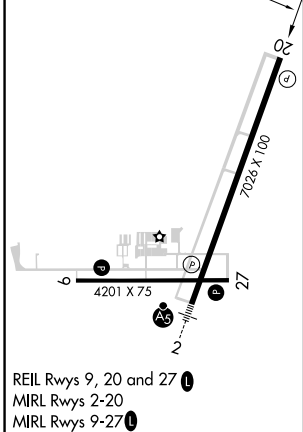
⚠ Baro-VNAV NA when using Aurora altimeter setting. For uncompensated Baro-VNAV systems, LNAV/VNAV NA below -16°C (4°F) or above 47°C (116°F).
⚠ DME/DME RNP-0.3 NA. Visibility reduction by helicopters NA. VDP NA when using Aurora altimeter setting. When local altimeter setting not present, use Aurora altimeter setting and increase all DA 61 feet and all MDA 80 feet; increase all LPV and LNAV/VNAV visibilities, LNAV Cat D visibility, and Circling Cats C/D visibility ¼ mile.

MISSED APPROACH:
Climb to 2700 direct TUGBY and hold.

| | | |
|--------------------------|---------------------------------------|---------------------------------|
| AWOS-3 119.075 | CHICAGO APP CON 133.5 349.0 | UNICOM 122.7 (CTAF) 0 |
|--------------------------|---------------------------------------|---------------------------------|



| | |
|----------|----------|
| ELEV 913 | TDZE 905 |
|----------|----------|



| | | | |
|------|-------|--|-------------------|
| 2700 | TUGBY | VGSI and RNAV glidepath not coincident (VGSI Angle 3.00/TCH 29). | POYIV |
| | | | 3000 |
| | | | Procedure Turn NA |
| | | | GP 3.00° |
| | | | TCH 45 |

| CATEGORY | A | B | C | D |
|--------------|-------------|-------------|--------------|--------------|
| LPV DA | | 1155-¾ | 250 (300-¾) | |
| LNAV/VNAV DA | | 1430-1¾ | 525 (600-1¾) | |
| LNAV MDA | 1320-1 | 415 (500-1) | 1320-1¼ | 415 (500-1¼) |
| CIRCLING | 1360-1 | 1500-1 | 1600-2 | 1740-2¾ |
| | 447 (500-1) | 587 (600-1) | 687 (700-2) | 827 (900-2¾) |

EC-3, 18 APR 2024 to 16 MAY 2024

EC-3, 18 APR 2024 to 16 MAY 2024