

WAAS CH <b>86316</b> <b>W16A</b>	APP CRS <b>165°</b>	Rwy Idg TDZE Apt Elev	<b>6003</b> <b>318</b> <b>318</b>
--	------------------------	-----------------------------	---

# RNAV (GPS) RWY 16

BRENHAM MUNI (11R)

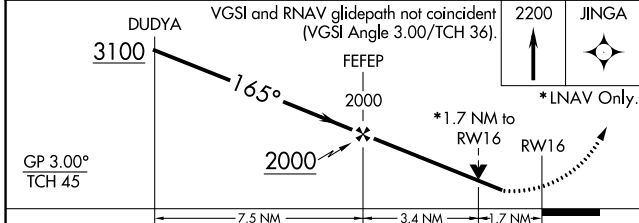
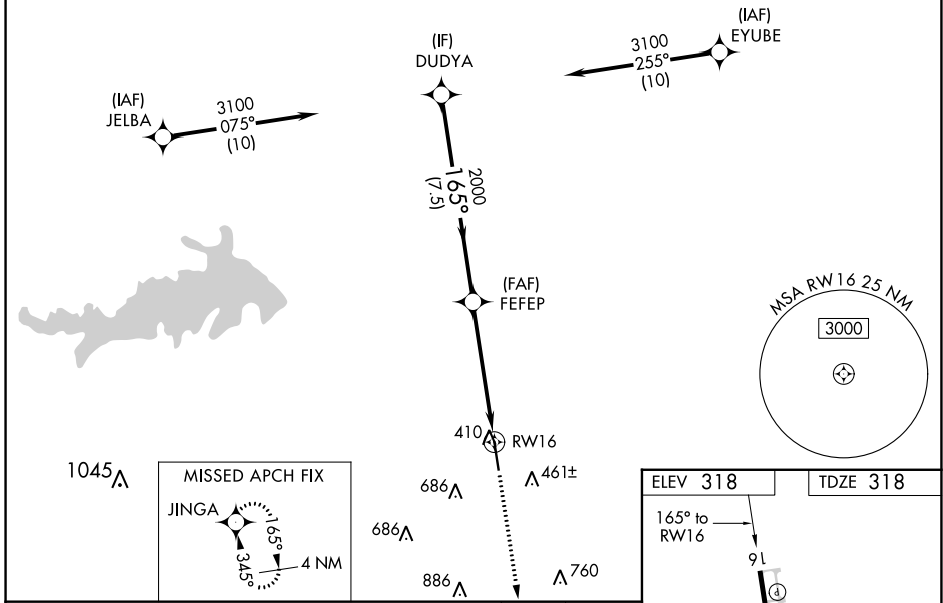
**RNP APCH.**

**⚠** Rwy 16 helicopter visibility reduction below 3/4 SM NA. For uncompensated Baro-VNAV systems, LNAV/VNAV NA below -15°C or above 37°C. When local altimeter setting not received, use College Station altimeter setting and increase all DA 52 feet, and all MDA 60 feet, increase LPV and LNAV/VNAV all Cats and LNAV Cats C/D visibility 1/4 SM. VDP and Baro-VNAV NA with College Station altimeter setting.

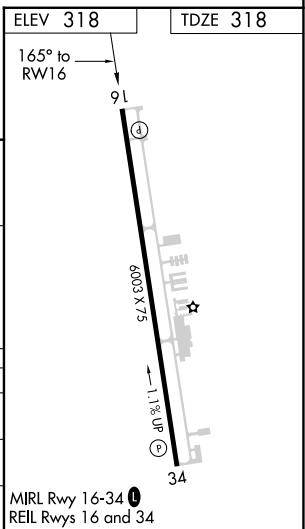
**MISSED APPROACH:** Climb to 2200 direct JINGA and hold.

AWOS-3 <b>121.125</b>	HOUSTON APP CON <b>134.3 360.85</b>	UNICOM <b>123.075 (CTAF) ①</b>
--------------------------	--	-----------------------------------

## RADAR REQUIRED



CATEGORY	A	B	C	D
LPV DA		594-7/8	276 (300-7/8)	
LNAV/VNAV DA		680-1 1/4	362 (400-1 1/4)	
LNAV MDA	880-1	562 (600-1)	880-1 5/8	562 (600-1 5/8)



SC-5, 18 APR 2024 to 16 MAY 2024

SC-5, 18 APR 2024 to 16 MAY 2024