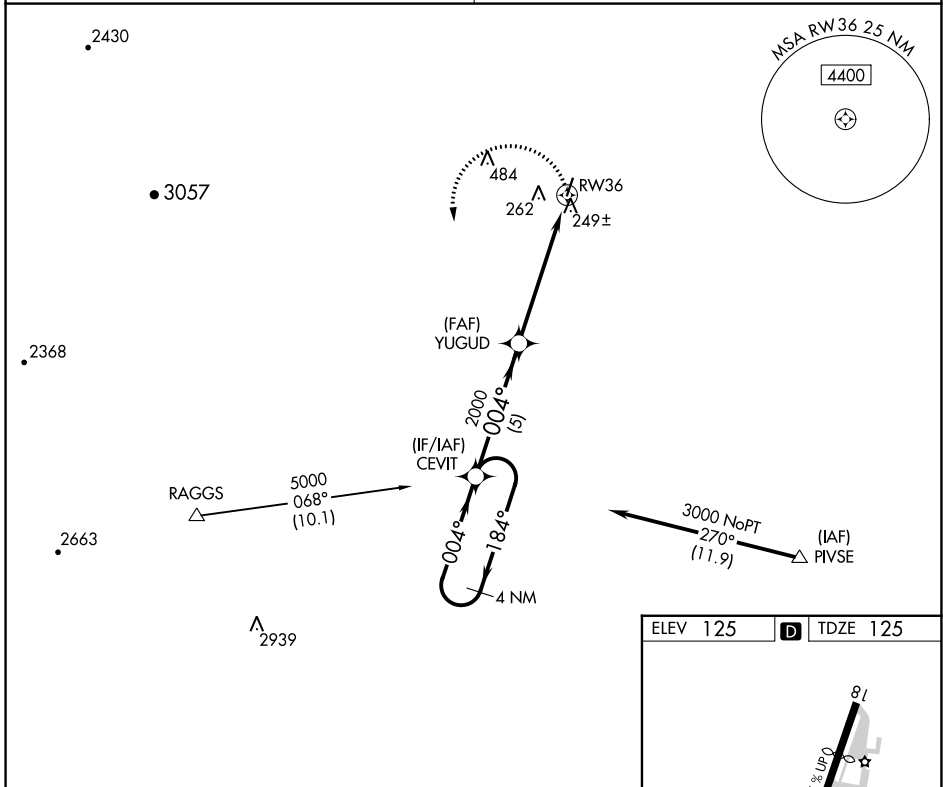


APP CRS 004°	Rwy Idg 3244
	TDZE 125
	Apt Elev 125

RNAV (GPS) RWY 36

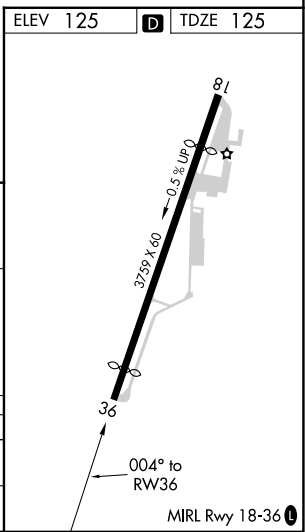
WATTS-WOODLAND (O41)

<p>NA Procedure NA at night. Use Sacramento Intl altimeter setting; when not received, use Sacramento Exec altimeter setting and increase all MDA 20 feet.</p>	<p>MISSED APPROACH: Climbing left turn to 3000 direct CEVIT and hold.</p>
<p>TRAVIS APP CON 126.6 281.45</p>	<p>UNICOM 122.8 (CTAF)</p>



SW-2, 18 APR 2024 to 16 MAY 2024

SW-2, 18 APR 2024 to 16 MAY 2024



4 NM Holding Pattern	CEVIT		3000	CEVIT
	←184°	→004°	004°	3.05° TCH 40
		YUGUD	2000	RW36
	5 NM	5.7 NM		
CATEGORY	A	B	C	D
RNAV MDA	560-1	435 (500-1)	NA	
CIRCLING	620-1	495 (500-1)	NA	