

WAAS CH 69431 W05A	APP CRS 049°	Rwy Idg TDZE 166 Apt Elev 166	5254
--	------------------------	---	-------------

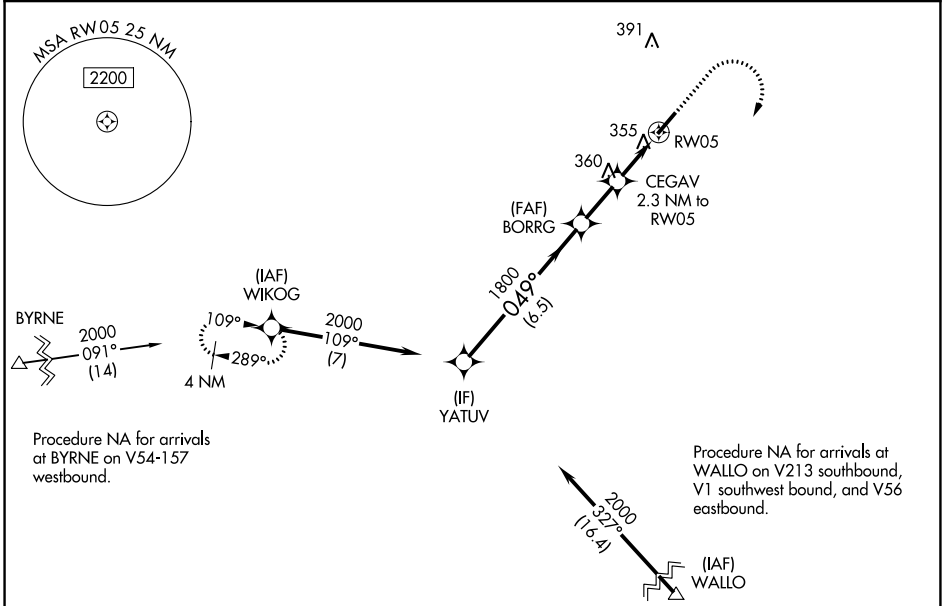
RNAV (GPS) RWY 5

MOUNT OLIVE MUNI (W40)

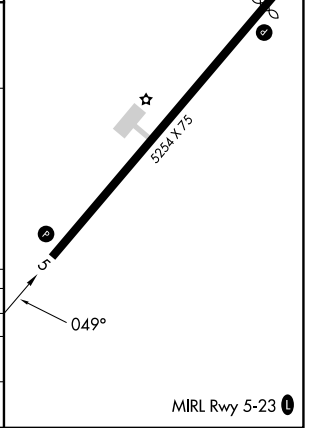
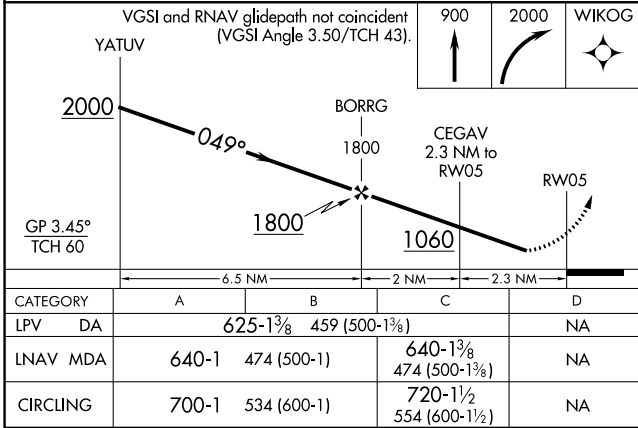
RNP APCH - GPS.

<p>▽ ▲</p> <p>Rwy 5 helicopter visibility reduction below 3/4 SM NA. When local altimeter setting not received, use Goldsboro altimeter setting.</p>	<p>MISSED APPROACH: Climb to 900 then climbing right turn to 2000 direct WIKOG and hold.</p>
--	--

AWOS-3P 120.075	SEYMOUR JOHNSON APP CON* 119.7 273.6	UNICOM 122.8 (CTAF) 0
---------------------------	--	---------------------------------



ELEV 166	TDZE 166
----------	----------



SE-2, 18 APR 2024 to 16 MAY 2024

SE-2, 18 APR 2024 to 16 MAY 2024