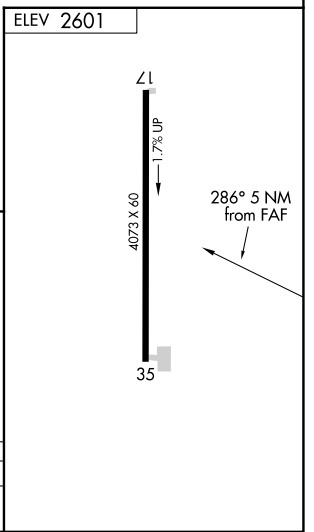
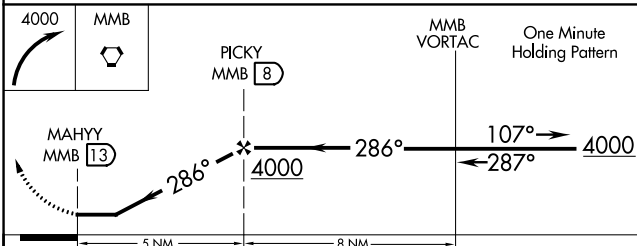
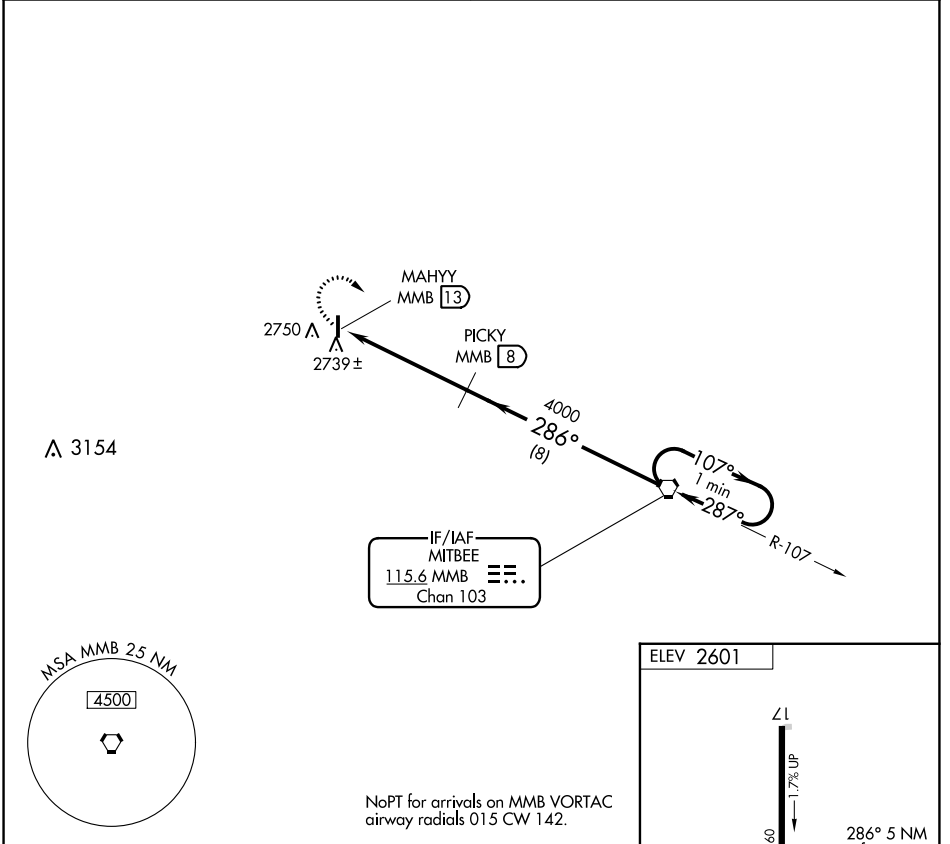


VORTAC MMB <b>115.6</b> Chan <b>103</b>	APP CRS <b>286°</b>	Rwy Idg TDZE Apt Elev <b>2601</b>	<b>N/A</b> <b>N/A</b> <b>2601</b>
---	------------------------	--	---

**VOR/DME-A**  
FOLLETT/LIPSCOMB COUNTY (T93)

<p><b>▽</b> Use Gage, OK altimeter setting, when not received use Perryton, TX altimeter setting and increase all MDA 20 feet.</p> <p><b>△</b> NA</p>	<p><b>MISSED APPROACH:</b> Climbing right turn to 4000 direct MMB VORTAC and hold.</p>
---	--

<p><b>KANSAS CITY CENTER</b> <b>126.95 379.2</b></p>	<p><b>CTAF</b> <b>122.9</b></p>
--	-------------------------------------



CATEGORY	A	B	C	D
CIRCLING	3160-1 559 (600-1)		NA	

SC-2, 18 APR 2024 to 16 MAY 2024

SC-2, 18 APR 2024 to 16 MAY 2024