

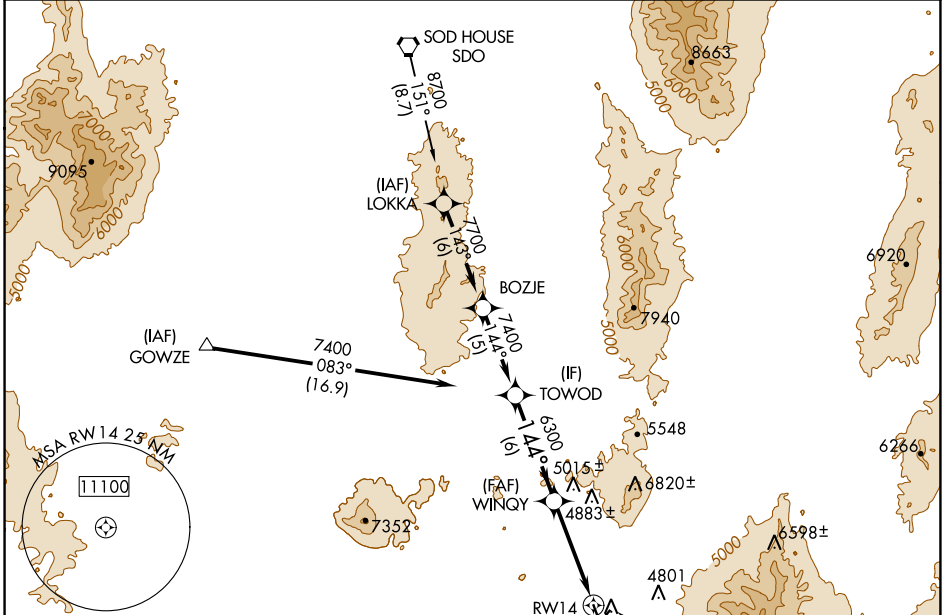
WAAS CH 62902 W14A	APP CRS 144°	Rwy Idg 7000 TDZE 4304 Apt Elev 4308
--	------------------------	---

RNAV (GPS) RWY 14

WINNEMUCCA MUNI (WMC)

RNP APCH.	MISSED APPROACH: Climb to 12000 direct MUXSU and via 147° track to CUTVA and hold, continue climb-in-hold to 12000.
<p>▽ If local altimeter setting not received, use Battle Mountain altimeter setting and increase all DAs/MDAs 140 feet.</p> <p>△ VDP NA when using Battle Mountain altimeter setting.</p>	

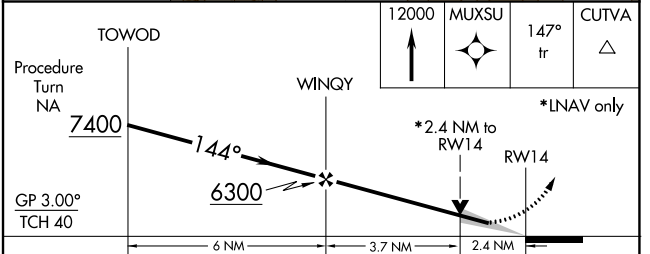
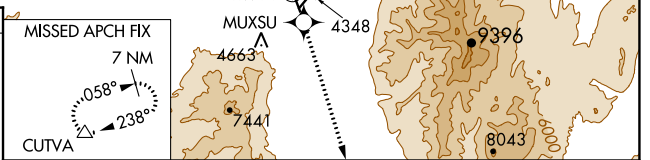
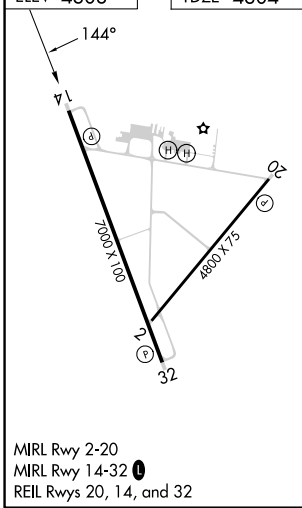
ASOS 120.175	SALT LAKE CITY CENTER 132.25 338.35	UNICOM 122.8 (CTAF) 0
------------------------	---	---------------------------------



SW-4, 18 APR 2024 to 16 MAY 2024

SW-4, 18 APR 2024 to 16 MAY 2024

ELEV 4308	TDZE 4304
-----------	-----------



GP 3.00° TCH 40	6 NM	3.7 NM	2.4 NM	
CATEGORY	A	B	C	D
LPV DA	4843-2 539 (600-2)			
LNAV MDA	5100-1 796 (800-1)	5100-1¼ 796 (800-1¼)	5100-2¼ 796 (800-2¼)	5100-2½ 796 (800-2½)