

| | |
|------------------------|-------------------------|
| APP CRS 226° | Rwy Idg 4797 |
| | TDZE 1023 |
| | Apt Elev 1029 |

RNAV (GPS) RWY 22

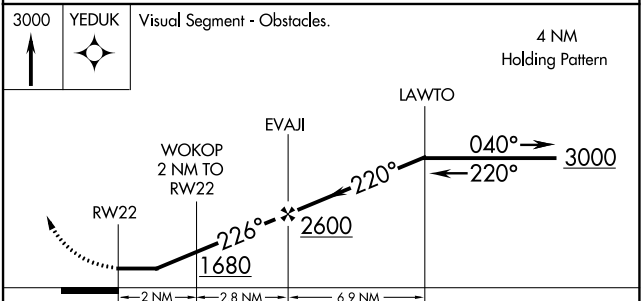
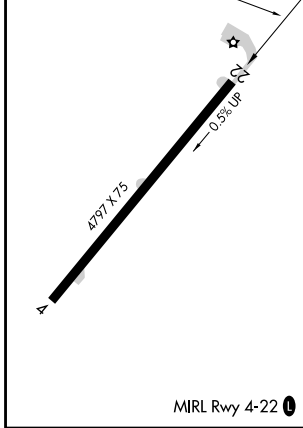
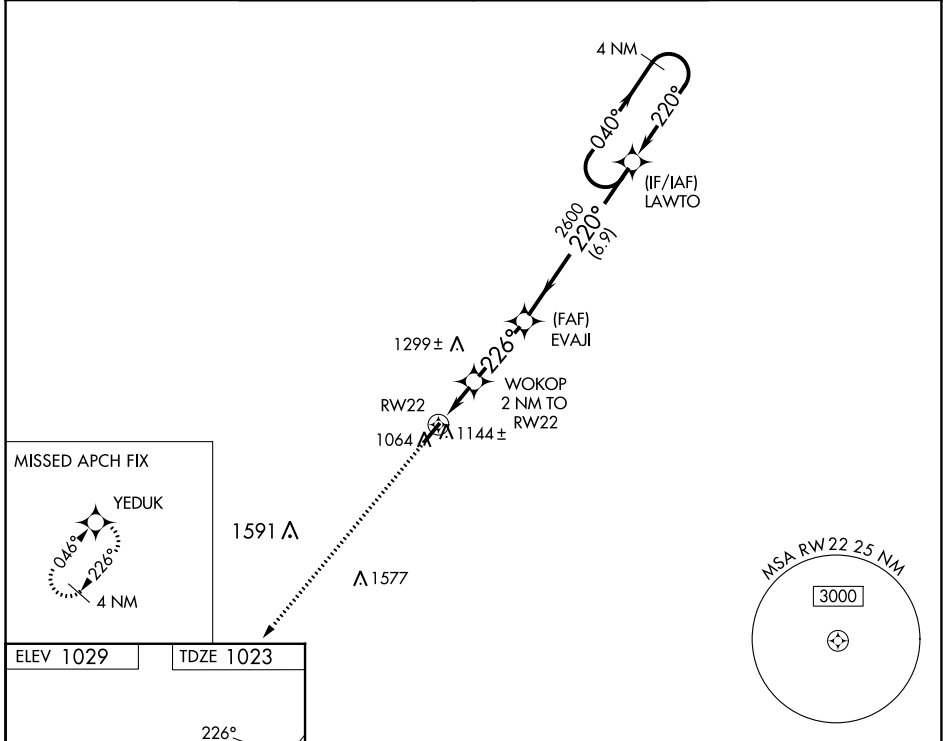
HARDIN COUNTY (I95)

RNP APCH - GPS.

▼ **NA** Rwy 22 helicopter visibility reduction below 1 SM NA. Procedure NA at night. Circling NA for Cat D NW of Rwy 04-22. When local altimeter setting not received, use Lima altimeter setting and increase all MDAs 60 feet and LNAV visibility Cat C ¼ SM and Circling visibility Cat C ¼ SM.

MISSED APPROACH: Climb to 3000 direct YEDUK and hold.

| | | | |
|------------------------|----------------------------|---|----------------------------------|
| AWOS-3 126.4 | AOH ASOS 128.725 | COLUMBUS APP CON 118.425 323.15 | UNICOM 122.8 (CTAF) 0* |
|------------------------|----------------------------|---|----------------------------------|



| CATEGORY | A | B | C | D |
|----------|-----------------------|-----------------------|-------------------------|-------------------------|
| LNAV MDA | 1460-1 | 437 (500-1) | 1460-1¼ 437 (500-1¼) | 1460-1½ 437 (500-1½) |
| CIRCLING | 1580-1 551 (600-1) | 1620-1 591 (600-1) | 1620-1½ 591 (600-1½) | 1620-2 591 (600-2) |

EC-2, 18 APR 2024 to 16 MAY 2024

EC-2, 18 APR 2024 to 16 MAY 2024