

WAAS CH <b>40024</b> <b>W34A</b>	APP CRS <b>341°</b>	Rwy Idg TDZE Apt Elev	<b>3402</b> <b>108</b> <b>113</b>
--	------------------------	-----------------------------	---

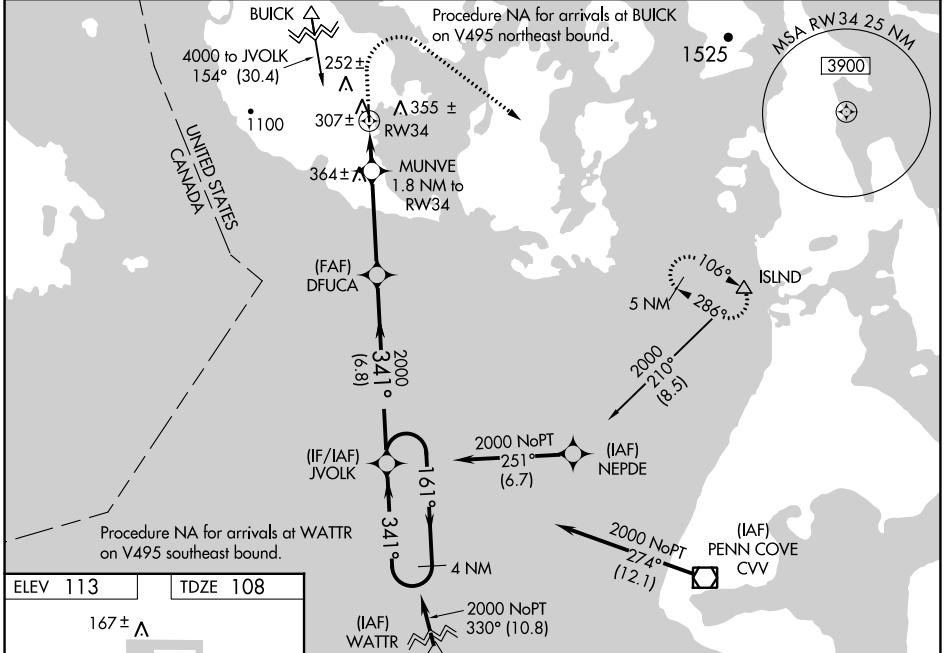
# RNAV (GPS) RWY 34

FRIDAY HARBOR (FHR)

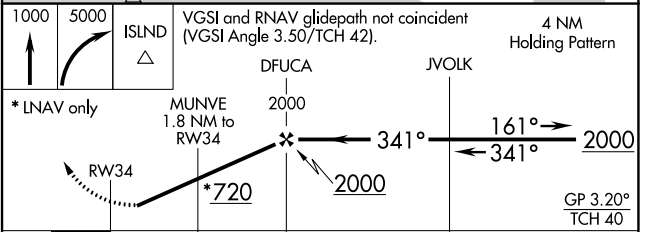
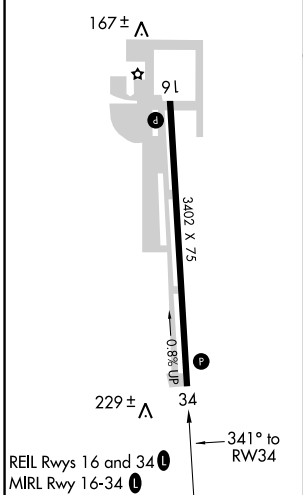
**⚠** When VGSI inop, Circling Rwy 16 NA at night. Baro-VNAV NA when using Burlington/Mount Vernon altimeter setting. For uncompensated Baro-VNAV systems, LNAV/VNAV NA below -15°C (5°F) or above 43°C (109°F). When VGSI inop, Straight-in/Circling Rwy 34 procedure NA at night. Circling NA west of Rwy 16-34. DME/DME RNP-0.3 NA. Helicopter visibility reduction below 1 SM NA. When local altimeter setting not received, use Burlington/Mount Vernon altimeter setting; increase all DA 61 feet and all MDA 80 feet; increase LPV visibility all Cats ¼ mile, LNAV/VNAV visibility all Cats ¼ mile, LNAV visibility Cat C ¼ mile, and Circling visibility Cat C ¼ mile.

**MISSED APPROACH:** Climb to 1000, then climbing right turn to 5000 direct ISLND and hold, continue climb-in-hold to 5000.

ASOS <b>135.675</b>	WHIDBEY APP CON <b>118.2 285.65</b>	CTAF <b>128.25</b>
------------------------	--	-----------------------



ELEV 113	TDZE 108
----------	----------



CATEGORY	A			B		C		D
	LPV DA	DA	MDA	LPV DA	DA	MDA	MDA	
LPV DA	467-1 1/8	359 (400-1 1/8)						NA
LNAV/VNAV DA	513-1 1/4	405 (400-1 1/4)						NA
LNAV MDA	620-1	512 (600-1)		620-1 1/2	512 (600-1 1/2)			NA
CIRCLING	720-1 607 (700-1)	820-1 707 (800-1)		840-2 727 (800-2)				NA

NW-1, 18 APR 2024 to 16 MAY 2024

NW-1, 18 APR 2024 to 16 MAY 2024