

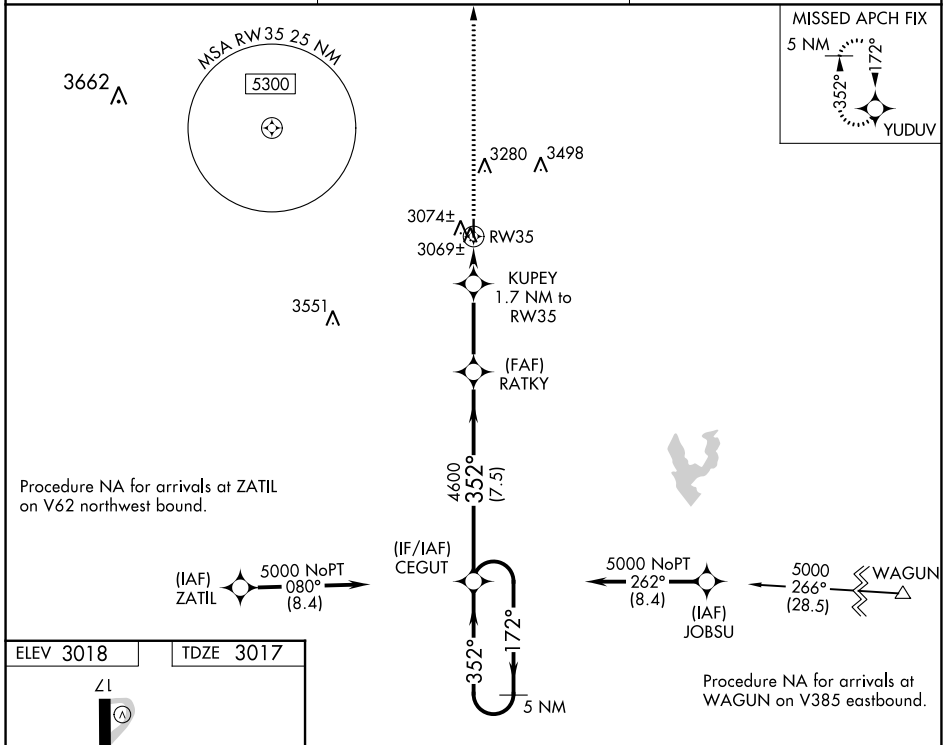
WAAS CH <b>53423</b> <b>W35A</b>	APP CRS <b>352°</b>	Rwy Idg TDZE Apt Elev	<b>3600</b> <b>3017</b> <b>3018</b>
--	------------------------	-----------------------------	---

# RNAV (GPS) RWY 35

CROSBYTON MUNI (8F3)

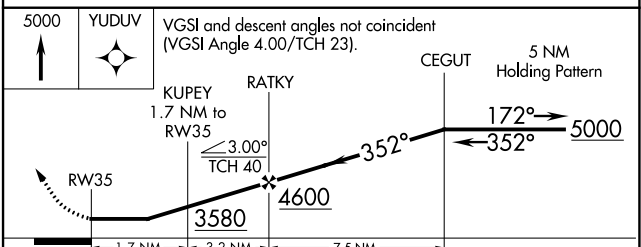
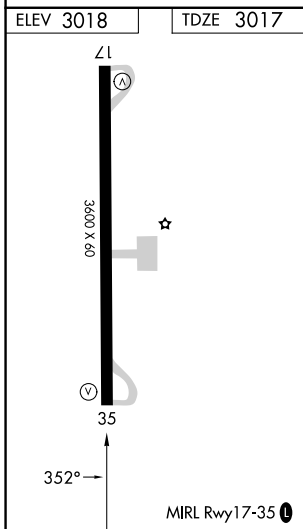
RNP APCH.	<p>▼ Use Lubbock altimeter setting. Procedure NA at night.</p> <p>▲ NA Rwy 35 helicopter visibility reduction below 1 SM NA.</p>	MISSED APPROACH: Climb to 5000 direct YUDUV and hold.
-----------	--	---

LBB ASOS <b>125.3</b>	LUBBOCK APP CON <b>119.2 351.8</b>	UNICOM <b>122.8 (CTAF) 0</b>
--------------------------	---------------------------------------	---------------------------------



Procedure NA for arrivals at ZATIL on V62 northwest bound.

Procedure NA for arrivals at WAGUN on V385 eastbound.



CATEGORY	A	B	C	D
LP MDA	3440-1	423 (500-1)	3440-1¼ 423 (500-1¼)	NA
LNAV MDA	3440-1	423 (500-1)	3440-1¼ 423 (500-1¼)	NA
CIRCLING	3500-1 482 (500-1)	3740-1 722 (800-1)	3920-2¾ 902 (1000-2¾)	NA