

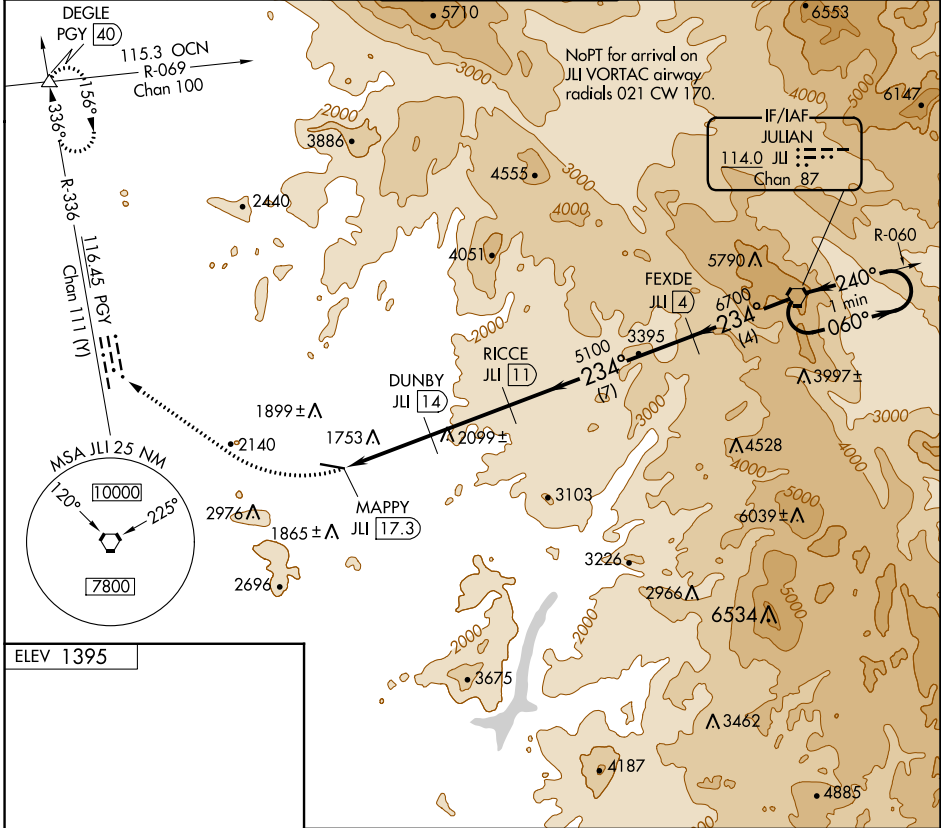
VORTAC JLI <b>114.0</b> Chan 87	APP CRS <b>234°</b>	Rwy Idg TDZE Apt Elev <b>1395</b>	<b>N/A</b> <b>N/A</b>
---------------------------------------	------------------------	---	--------------------------

# VOR/DME-A RAMONA (R.NM)

**⚠** Circling NA north of Rwy 9-27.  
When local altimeter setting not received, use Gillespie Fld altimeter setting and increase all MDA 180 feet.

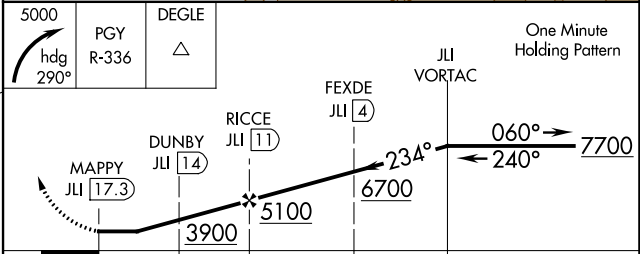
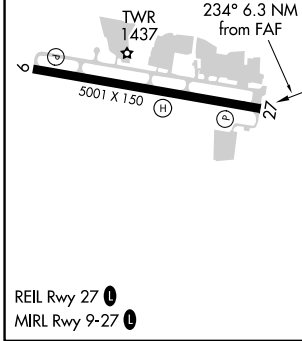
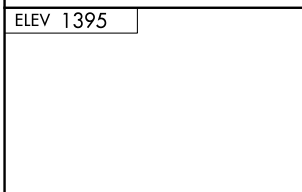
MISSED APPROACH: Climbing right turn to 5000 via heading 290° and PGY VORTAC R-336 to DEGLE/PGY 40 DME and hold.

ATIS <b>132.025</b>	SOCAL APP CON <b>132.2 269.1</b>	RAMONA TOWER ★ <b>119.875 (CTAF) ①</b>	GND CON <b>121.65</b>	UNICOM <b>122.95</b>
------------------------	-------------------------------------	---	--------------------------	-------------------------



SW-3, 18 APR 2024 to 16 MAY 2024

SW-3, 18 APR 2024 to 16 MAY 2024



CATEGORY	A	B	C	D
CIRCLING	2580-1¼ 1185 (1200-1¼)	2580-1½ 1185 (1200-1½)	3180-3 1785 (1800-3)	NA