

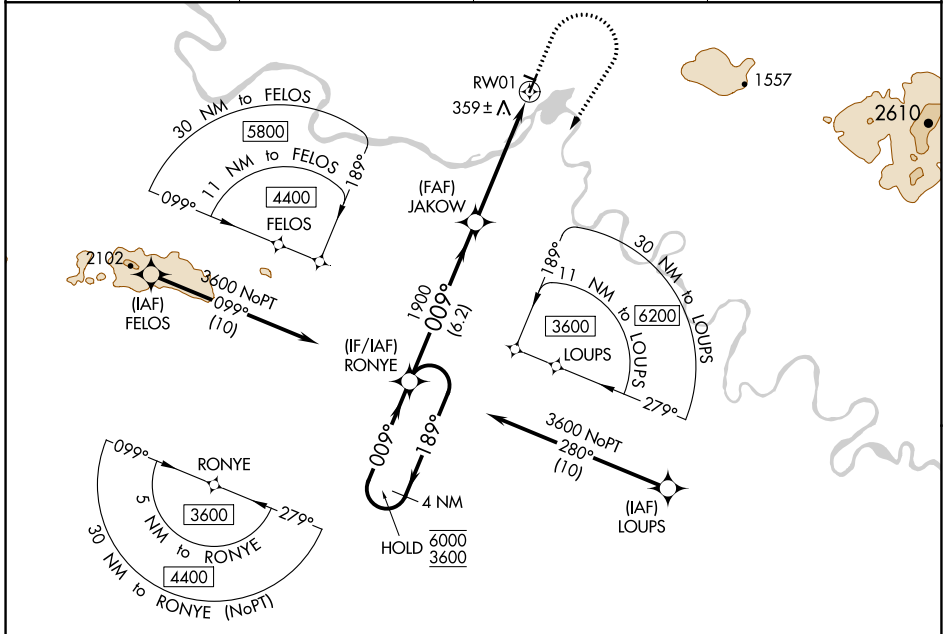
| | | | |
|--|------------------------|-----------------------------|---|
| WAAS CH 40439 W01A | APP CRS 009° | Rwy Idg TDZE Apt Elev | 4000 268 293 |
|--|------------------------|-----------------------------|---|

RNAV (GPS) RWY 1

AMBLER (AFM) (PAFM)

| | |
|--|--|
| RNP APCH. | MISSED APPROACH: Climb to 1000 then climbing right turn to 3600 direct RONYE and hold, continue climb-in-hold to 3600. # Missed approach requires minimum climb of 210 feet per NM to 2300. |
| <p> Circling NA west of Rwy 1-19. For uncompensated Baro-VNAV systems, LNAV/VNAV NA below -20°C or above 42°C. -37°C </p> | |

| | | | |
|-------------------------|--|--------------------------------|------------------------|
| AWOS-3P 132.1 | ANCHORAGE CENTER 119.2 263.0 | KOTZEBUE RADIO 122.0 | CTAF 122.7 0 |
|-------------------------|--|--------------------------------|------------------------|



AK, 21 MAR 2024 to 16 MAY 2024

AK, 21 MAR 2024 to 16 MAY 2024

| | | | | |
|---|-----------------------|---|--|--|
| VGSi and RNAV glidepath not coincident (VGSi Angle 3.00/TCH 25). 4 NM Holding Pattern RONYE GP 3.00° TCH 40 6.2 NM 2.8 NM 2.3 NM | | 1000 3600 RONYE *2.3 NM to RWY 1 *LNAV only. RWY 1 | ELEV 293 TDZE 268 MIRL Rwy 1-19 and 10-28 | |
| CATEGORY | A | B | C | D |
| LPV DA# | | 518-1 | 250 (300-1) | |
| LPV DA | | 686-1 $\frac{3}{8}$ | 418 (400-1 $\frac{3}{8}$) | |
| LNAV/VNAV DA | | 811-1 $\frac{7}{8}$ | 543 (600-1 $\frac{7}{8}$) | |
| LNAV MDA | 1000-1 732 (800-1) | 1000-1 $\frac{1}{4}$ 732 (800-1 $\frac{1}{4}$) | 1000-1 $\frac{7}{8}$ 732 (800-1 $\frac{7}{8}$) | 732 (800-1 $\frac{7}{8}$) |
| CIRCLING | 1000-1 707 (800-1) | 1000-1 $\frac{1}{4}$ 707 (800-1 $\frac{1}{4}$) | 1000-2 707 (800-2) | 1000-2 $\frac{1}{4}$ 707 (800-2 $\frac{1}{4}$) |