

APP CRS	Rwy Idg	4903
255°	TDZE	307
	Apt Elev	309

RNAV (GPS) RWY 26

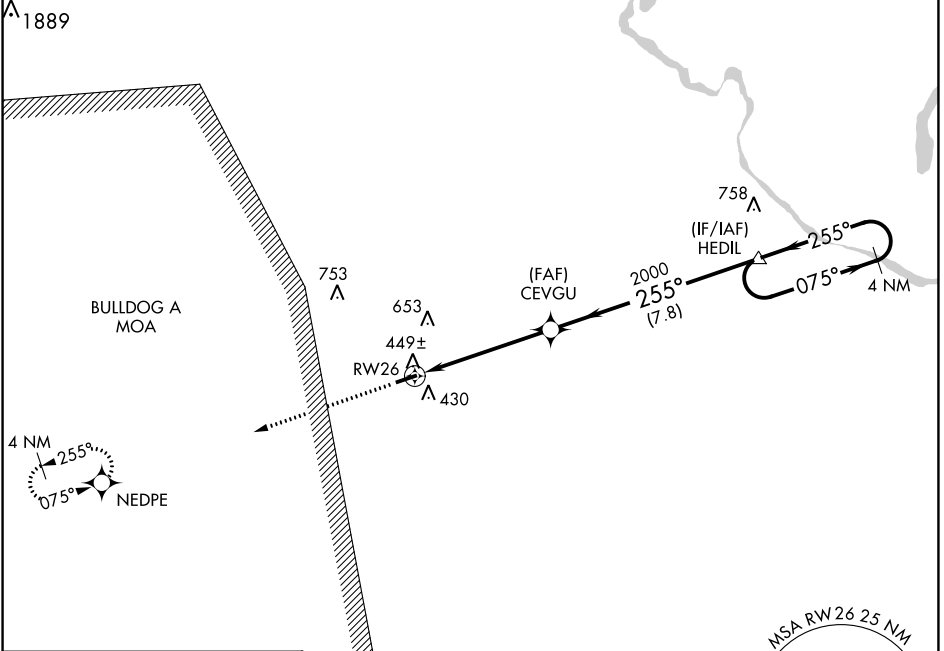
BURKE COUNTY (BXXG)

RNP APCH - GPS

Use Augusta Rgnl at Bush Fld alimeter setting.
 Procedure NA at night.
 Rwy 26 helicopter visibility reduction below 1 SM NA.

MISSED APPROACH: Climb to 2000 direct NEDPE and hold.

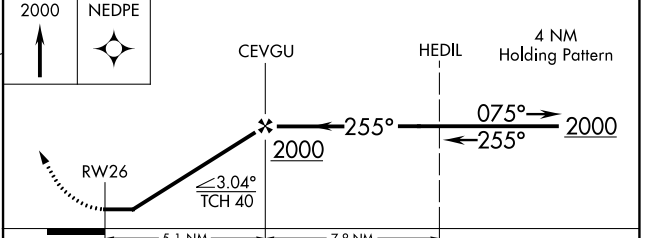
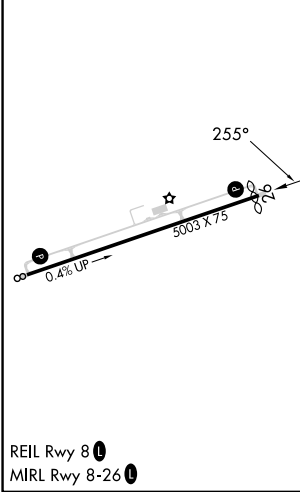
AGS ASOS 132.75	AUGUSTA APP CON* 126.8 270.3	CTAF 122.9
---------------------------	--	----------------------



SE-4, 18 APR 2024 to 16 MAY 2024

SE-4, 18 APR 2024 to 16 MAY 2024

ELEV	309	D	TDZE	307
------	-----	----------	------	-----



CATEGORY	A	B	C	D
LNAV MDA	800-1 493 (500-1)		800-1 $\frac{3}{8}$ 493 (500-1 $\frac{3}{8}$)	NA
CIRCLING	860-1 551 (600-1)	900-1 591 (600-1)	1080-2 $\frac{1}{4}$ 771 (800-2 $\frac{1}{4}$)	NA