

APP CRS	Rwy Idg	<b>3506</b>
<b>181°</b>	TDZE	<b>175</b>
	Apt Elev	<b>175</b>

# RNAV (GPS) RWY 18

GREENSBORO MUNI (7A)

RNP APCH - GPS.

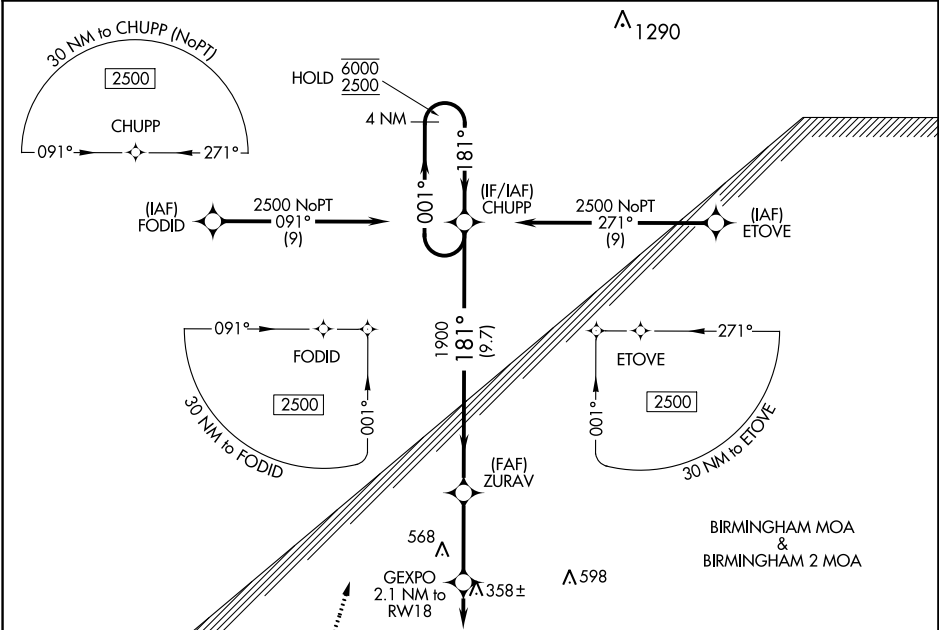
Procedure NA at night. Rwy 18 helicopter visibility reduction below 1 SM NA. Use Demopolis altimeter setting.

MISSED APPROACH: Climbing right turn to 2500 direct CHUPP and hold.

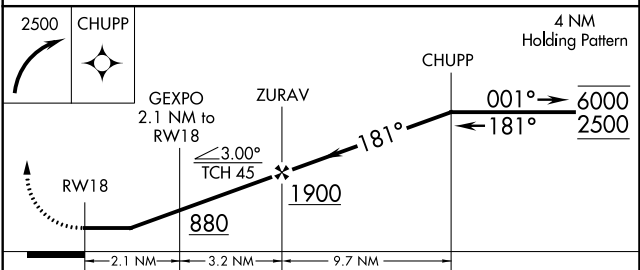
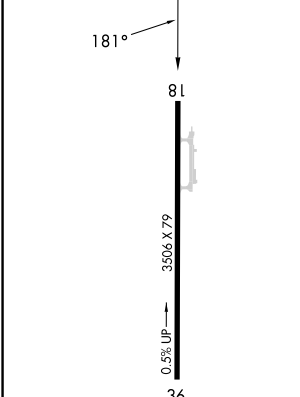
DYA AWOS-3P  
**119.475**

ATLANTA CENTER  
**132.25 263.025**

UNICOM  
**123.0 (CTAF)**



ELEV 175	TDZE 175
----------	----------



CATEGORY	A	B	C	D
LNAV MDA	680-1	505 (600-1)	680-1 <sup>3</sup> / <sub>8</sub>	505 (600-1 <sup>3</sup> / <sub>8</sub> )
CIRCLING	700-1 525 (600-1)	720-1 545 (600-1)	860-2 685 (700-2)	940-2 <sup>1</sup> / <sub>2</sub> 765 (800-2 <sup>1</sup> / <sub>2</sub> )

MIRL Rwy 18-36   
REIL Rws 18 and 36

GREENSBORO, ALABAMA  
Orig 30NOV23

32°41'N-87°40'W

# GREENSBORO MUNI (7A)

## RNAV (GPS) RWY 18

SE-4, 18 APR 2024 to 16 MAY 2024

SE-4, 18 APR 2024 to 16 MAY 2024