

WAAS CH <b>53643</b> <b>W18A</b>	APP CRS <b>175°</b>	Rwy Idg TDZE Apt Elev	<b>4001</b> <b>854</b> <b>870</b>
--	------------------------	-----------------------------	---

# RNAV (GPS) RWY 18

JONES MEML (3F7)

RNP APCH.

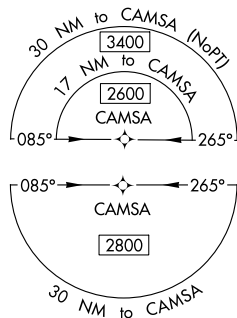
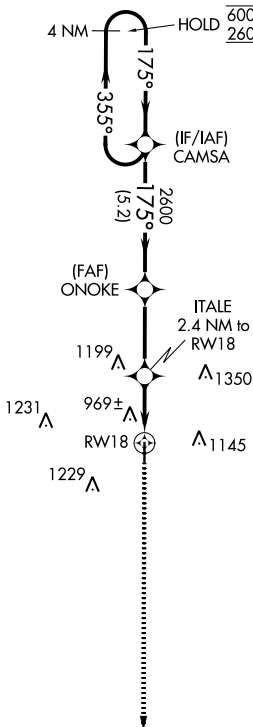
**▼** Rwy 18 helicopter visibility reduction below 3/4 SM NA.  
**▲** NA Baro-VNAV NA. Use Cushing altimeter setting.

MISSED APPROACH: Climb to 2600 direct DASTE and hold.

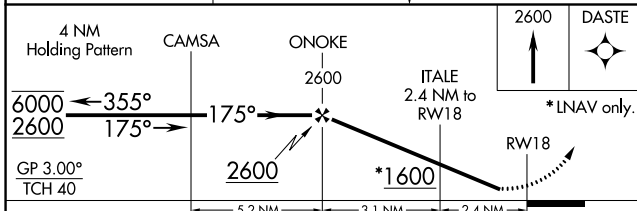
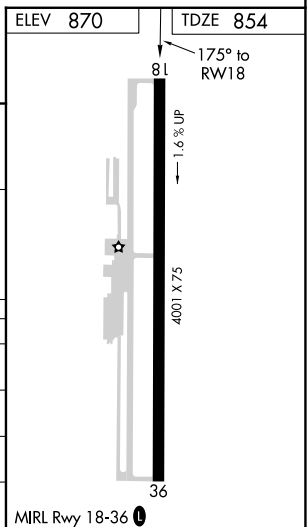
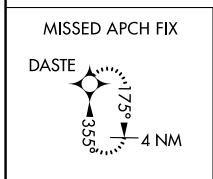
CUH AWOS-3  
**118.25**

KANSAS CITY CENTER  
**127.8 319.1**

CTAF  
**122.9**



▲ 1786



CATEGORY	A	B	C	D
LPV DA	1156-1	302 (300-1)		NA
LNAV/VNAV DA	1191-1	337 (400-1)		NA
LNAV MDA	1280-1	426 (500-1)	1280-1¼ 426 (500-1¼)	NA
<b>C</b> CIRCLING	1380-1 510 (600-1)	1500-1 630 (700-1)	1600-2 730 (800-2)	NA

SC-1, 18 APR 2024 to 16 MAY 2024

SC-1, 18 APR 2024 to 16 MAY 2024