

WAAS CH 82517 W12A	APP CRS 120°	Rwy Idg TDZE 413 Apt Elev 425
--	------------------------	---

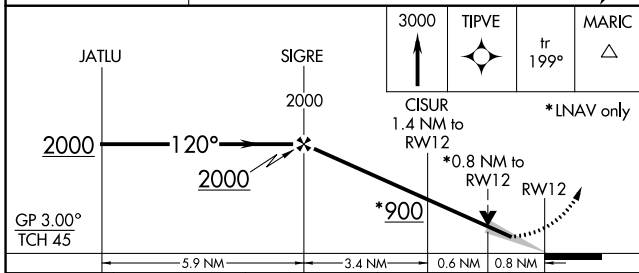
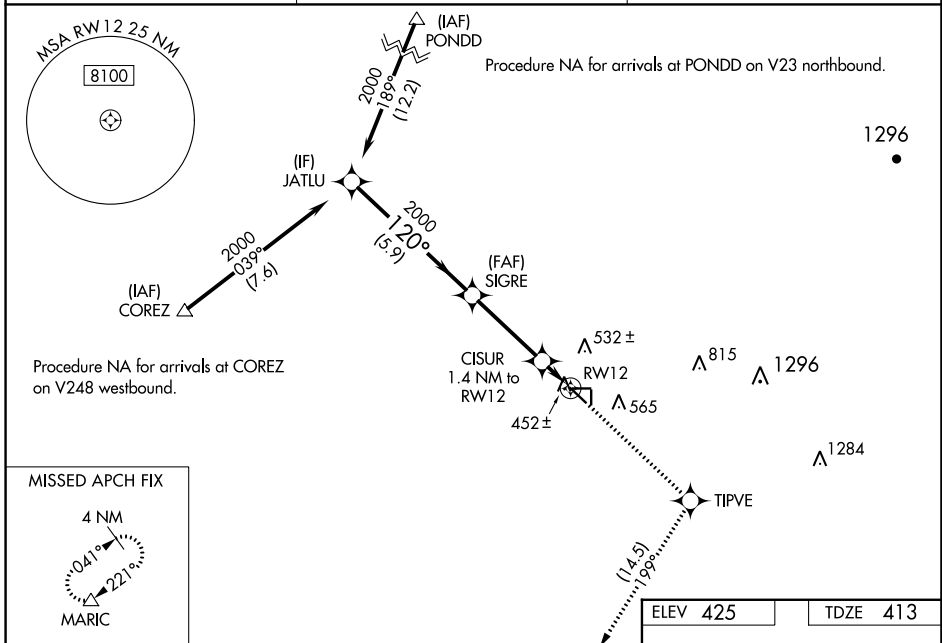
RNAV (GPS) RWY 12

SHAFTER-MINTER FLD (MIT)

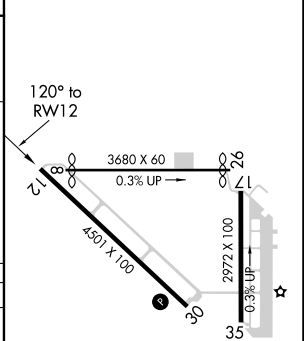
NA Baro-VNAV NA when using Bakersfield altimeter setting. For uncompensated Baro-VNAV systems, LNAV/VNAV NA below -15°C (5°F) or above 54°C (130°F).
 When local altimeter setting not received, use Bakersfield altimeter setting and increase LPV and LNAV/VNAV DA to 694 feet and LNAV/VNAV visibility to 7/8 all Cats; increase all MDA 40 feet. DME/DME RNP-0.3 NA.
 Night Landing Rwy 17, 35, 8, 26 NA.

MISSED APPROACH: Climb to 3000 direct TIPVE and on track 199° to MARIC and hold.

AWOS-3 121.125	BAKERSFIELD APP CON ★ 126.45 270.3	CTAF 122.9
--------------------------	--	----------------------



ELEV 425	TDZE 413
----------	----------



CATEGORY	A	B	C	D
LPV DA	663-3/4	250 (300-3/4)		NA
LNAV/VNAV DA	663-3/4	250 (300-3/4)		NA
LNAV MDA	740-1	327 (300-1)		NA
CIRCLING	900-1	475 (500-1)	940-1 1/2 515 (600-1 1/2)	NA

MIRL Rwy 12-30
REIL Rwy 12 and 30

SW-3, 18 APR 2024 to 16 MAY 2024

SW-3, 18 APR 2024 to 16 MAY 2024