

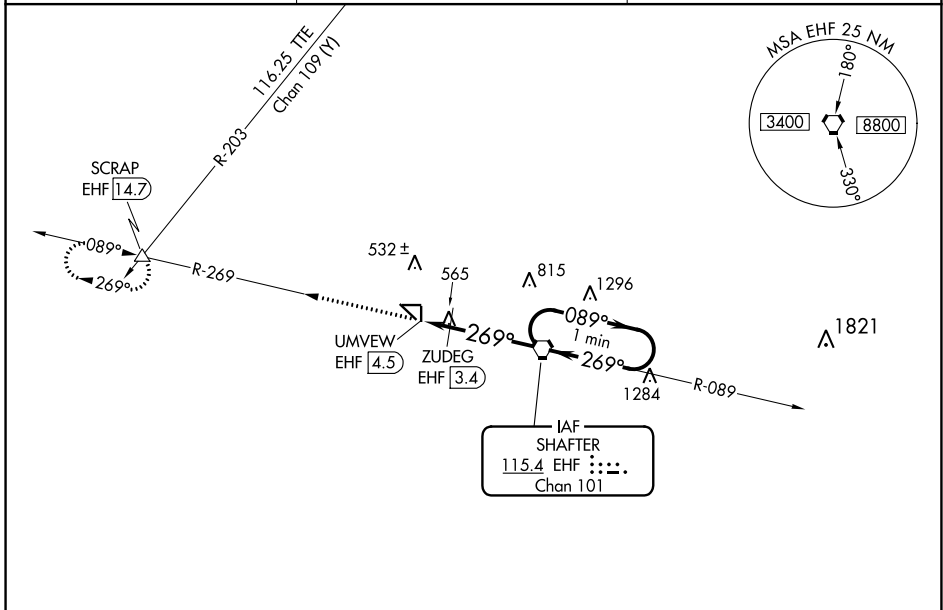
VORTAC EHF <b>115.4</b> Chan <b>101</b>	APP CRS <b>269°</b>	Rwy Idg TDZE Apt Elev	<b>N/A</b> <b>N/A</b> <b>425</b>
---	------------------------	-----------------------------	--

**VOR-A**  
SHAFTER-MINTER FLD (MIT)

**NA** Circling to Rwy 17, 35, 8 and 26 NA at night. When local altimeter setting not received, use Bakersfield altimeter setting and increase all MDAS 40 feet and increase Cat C visibility to 1 3/4.

MISSED APPROACH: Climb to 4000 on EHF VORTAC R-269 to SCRAP INT/EHF 14.7 DME and hold, continue climb-in-hold to 4000.

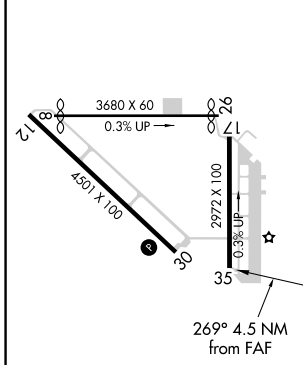
AWOS-3 <b>121.125</b>	BAKERSFIELD APP CON * <b>126.45 270.3</b>	CTAF <b>122.9</b>
--------------------------	--	----------------------



SW-3, 18 APR 2024 to 16 MAY 2024

SW-3, 18 APR 2024 to 16 MAY 2024

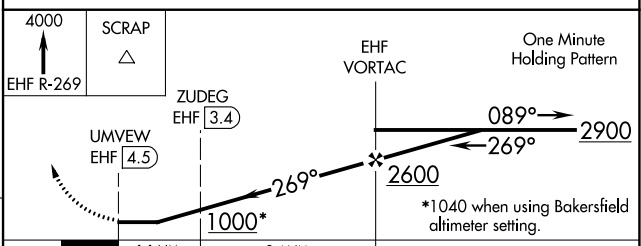
ELEV 425



MIRL Rwy 12-30  
REIL Rwys 12 and 30

FAF to MAP 4.5 NM

Knots	60	90	120	150	180
Min:Sec	4:30	3:00	2:15	1:48	1:30



CATEGORY	A	B	C	D
CIRCLING	1000-1	575 (600-1)	1000-1 1/2 575 (600-1 1/2)	NA
ZUDEG FIX MINIMUMS				
CIRCLING	900-1	475 (500-1)	940-1 1/2 515 (600-1 1/2)	NA