

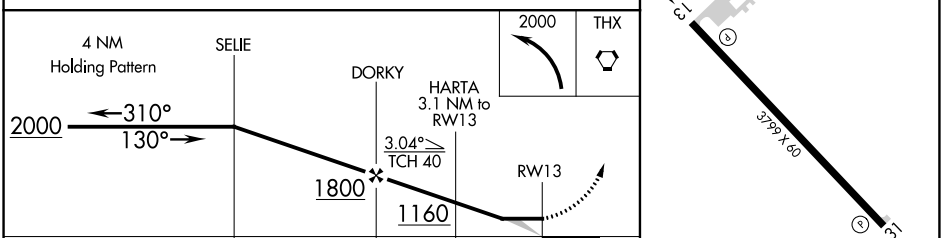
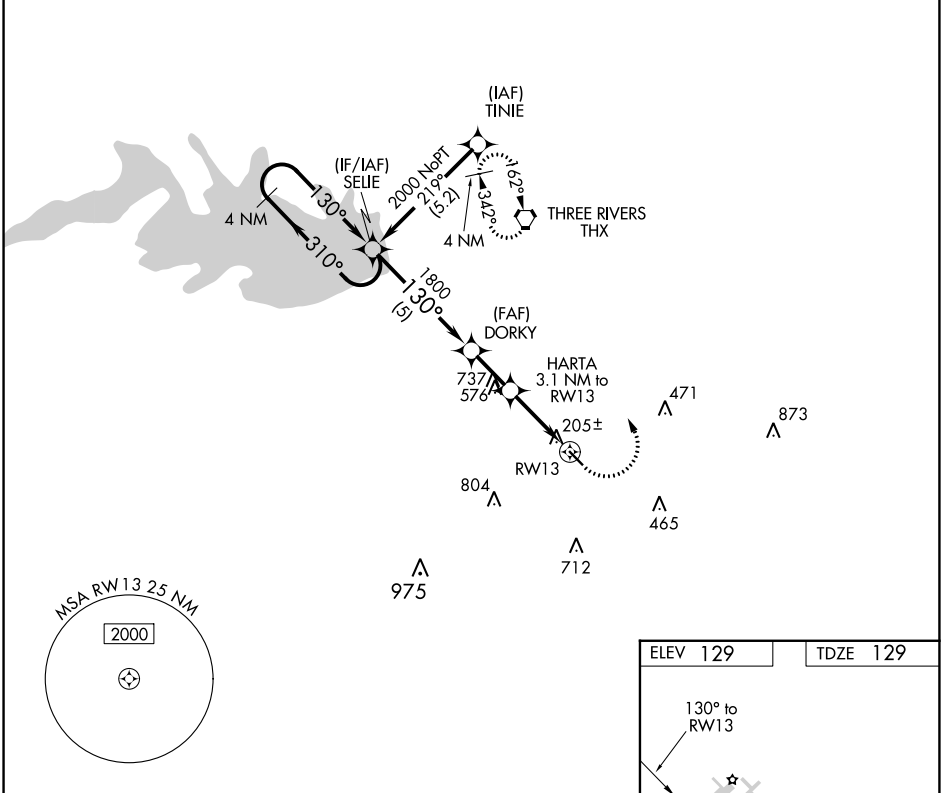
APP CRS 130°	Rwy Idg TDZE Apt Elev	3799 129 129
------------------------	-----------------------------	---

RNAV (GPS) RWY 13

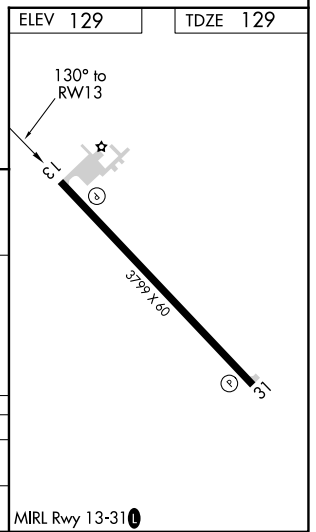
LIVE OAK COUNTY (8T6)

NA Use Alice Intl altimeter setting. DME/DME RNP-0.3 NA. Procedure NA at night. Visibility reduction by helicopters NA. MISSED APPROACH: Climbing left turn to 2000 direct THX VORTAC and hold.

AWOS-3PT 119.05	ALI ASOS 119.225	HOUSTON CENTER 134.6 322.5	CTAF 122.9	122.7 0
---------------------------	----------------------------	--------------------------------------	----------------------	----------------



CATEGORY	A	B	C	D
LNVA MDA	700-1	571 (600-1)	700-1½ 571 (600-1½)	NA
CIRCLING	760-1 631 (700-1)	860-1 731 (800-1)	860-2 731 (800-2)	NA



SC-3, 18 APR 2024 to 16 MAY 2024

SC-3, 18 APR 2024 to 16 MAY 2024