

WAAS CH <b>62937</b> <b>W09A</b>	APP CRS <b>091°</b>	Rwy Idg TDZE Apt Elev	<b>5001</b> <b>735</b> <b>738</b>
--	------------------------	-----------------------------	---

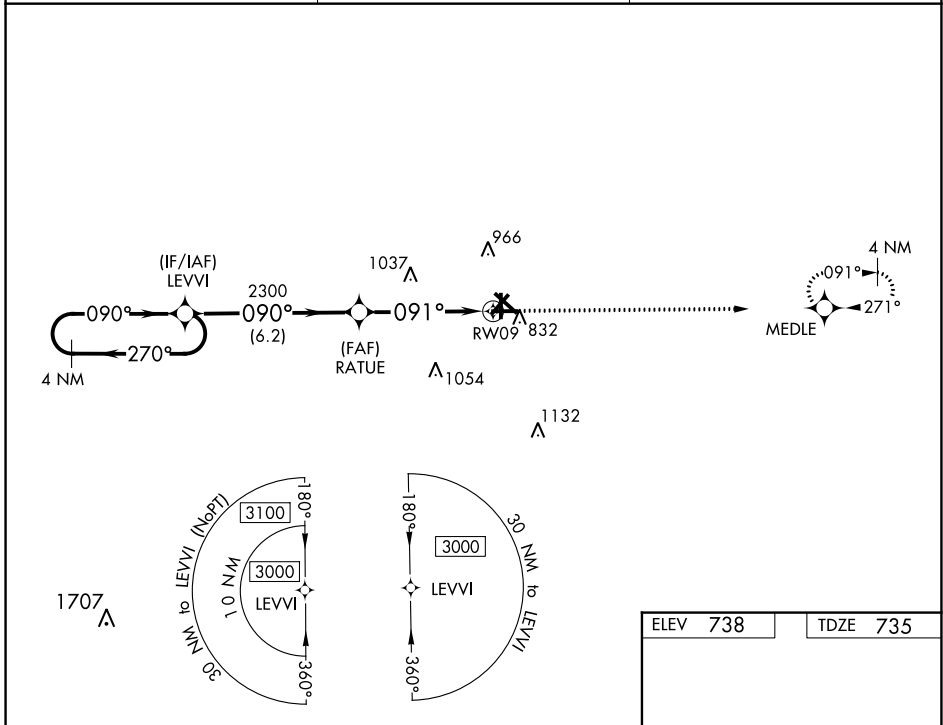
# RNAV (GPS) RWY 9

RANTOUL NTL AVN CNTR-FRANK ELLIOTT FLD (TIP)

**⚠** For uncompensated Baro-VNAV systems, LNAV/VNAV NA below -16°C (4°F) or above 54°C (130°F). DME/DME RNP-0.3 NA. When local altimeter setting not received, use Champaign Urbana altimeter setting and increase DA 41 feet and all MDA 60 feet; increase LNAV/VNAV all Cats and LNAV Cats C/D visibility 1/8 mile and Circling Cats C/D visibility 1/4 mile. Baro-VNAV and VDP NA when using Champaign Urbana altimeter setting. Helicopter visibility reduction below 3/4 SM NA.

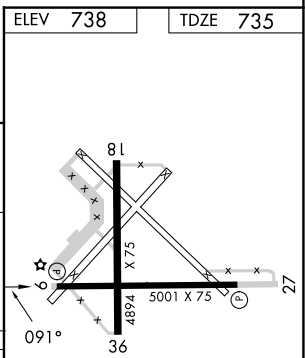
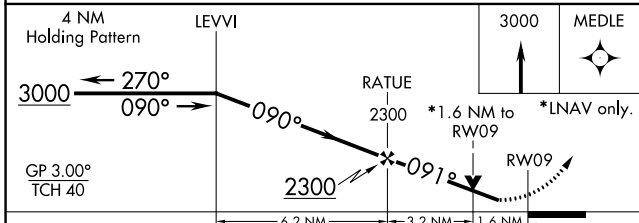
**MISSED APPROACH:**  
Climb to 3000 direct  
MEDLE and hold.

AWOS-3 <b>119.025</b>	CHAMPAIGN APP CON ★ <b>121.35 285.65</b>	UNICOM <b>123.0 (CTAF) 0</b>
--------------------------	---	---------------------------------

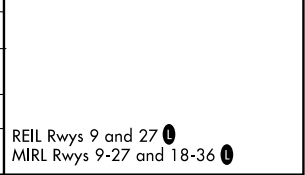


EC-3, 18 APR 2024 to 16 MAY 2024

EC-3, 18 APR 2024 to 16 MAY 2024



CATEGORY	A	B	C	D
LPV DA	985-1		250 (300-1)	
LNAV/VNAV DA	1167-1 1/2		432 (500-1 1/2)	
LNAV MDA	1280-1	545 (600-1)	1280-1 5/8	545 (600-1 5/8)
<b>C</b> CIRCLING	1280-1	542 (600-1)	1380-1 3/4 642 (700-1 3/4)	1420-2 1/4 682 (700-2 1/4)



# RNAV (GPS) RWY 9