

WAAS CH 82418 W18A	APP CRS 186°	Rwy Idg TDZE Apt Elev	5700 6763 6763
----------------------------------------	------------------------	-----------------------------	-------------------------------------------

RNAV (GPS) RWY 18

PANGUITCH MUNI (U55)

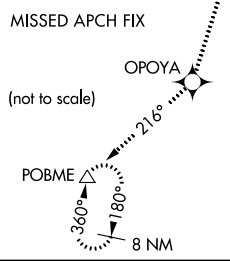
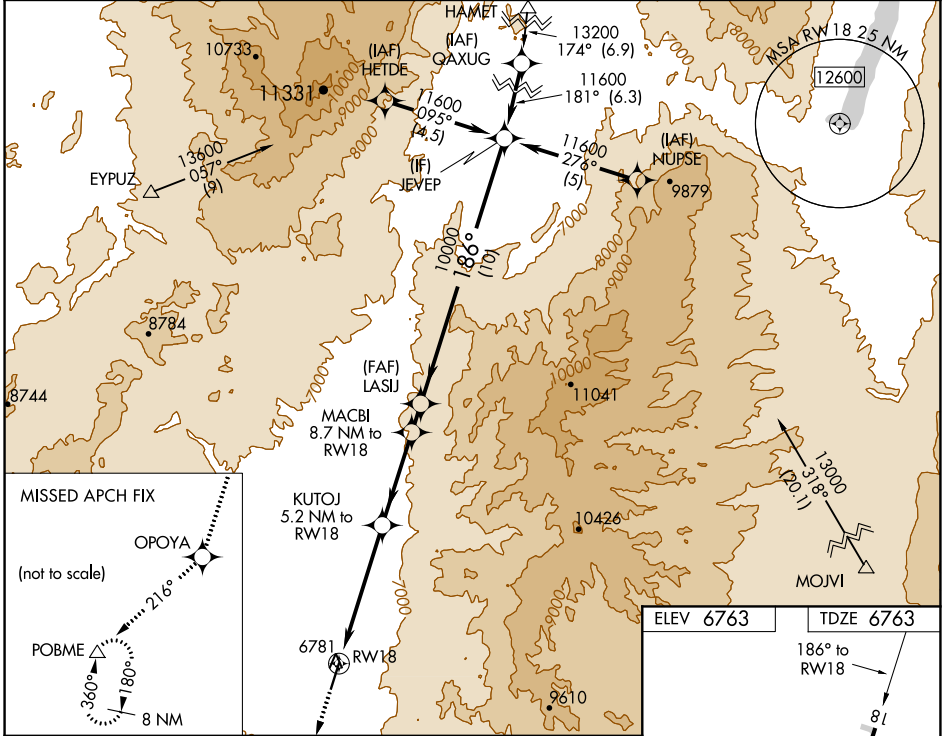
For uncompensated Baro-VNAV systems, LNAV/VNAV NA below -28°C (-18°F) or above 54°C (130°F). DME/DME RNP-0.3 NA. When local altimeter setting not received use Bryce Canyon altimeter setting and increase all DA 149 feet and all MDA 160 feet, increase LPV visibility ¼ mile and increase LNAV visibility and Circling Cat B visibility ¼ mile. Baro-VNAV and VDP NA with Bryce Canyon altimeter setting.

MISSED APPROACH: Climb to 12500 direct OPOYA and on track 216° to POBME and hold, continue climb-in-hold 12500.

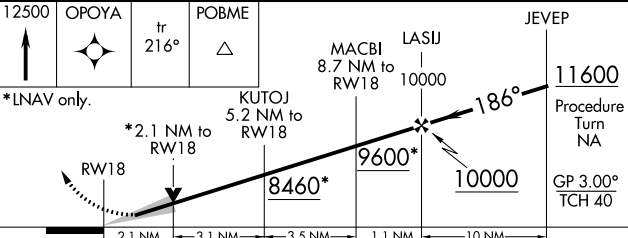
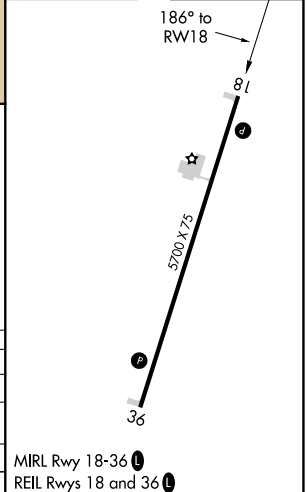
AWOS-3
133.125

SALT LAKE CENTER
133.6 269.25

CTAF
122.9



ELEV 6763	TDZE 6763
-----------	-----------



CATEGORY	A	B	C	D
LPV DA	6963-1	200 (200-1)		NA
LNAV/VNAV DA	7331-2	568 (600-2)		NA
LNAV MDA	7460-1	697 (700-1)		NA
C CIRCLING	7460-1	697 (700-1)		NA

MIRL Rwy 18-36
REIL Rwy 18 and 36

SW-4, 18 APR 2024 to 16 MAY 2024

SW-4, 18 APR 2024 to 16 MAY 2024