

APP CRS	Rwy Idg	2705
339°	TDZE	2066
	Apt Elev	2066

RNAV (GPS) RWY 34

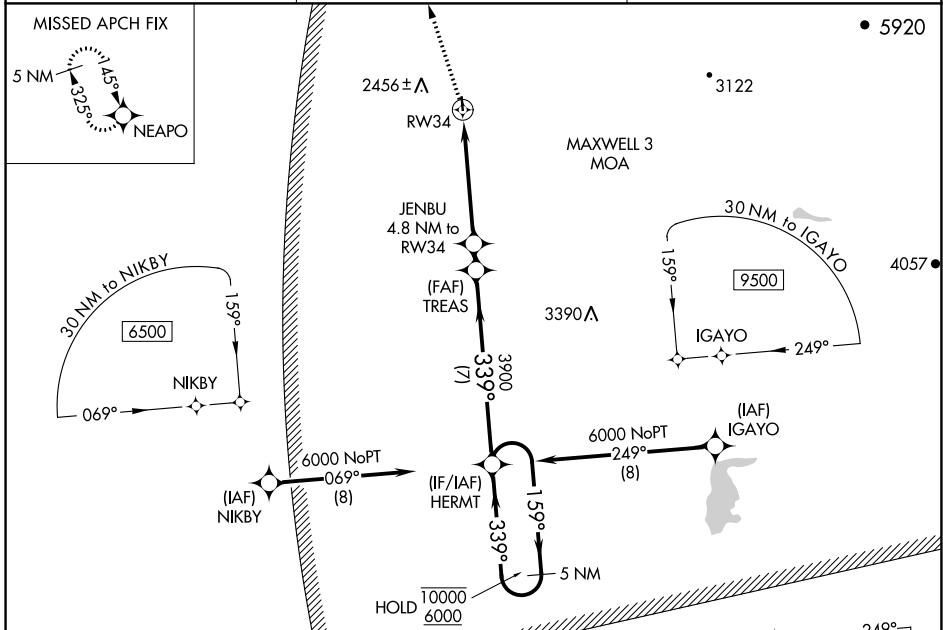
ELLS FLD/WILLITS MUNI (O28)

RNP APCH - GPS.

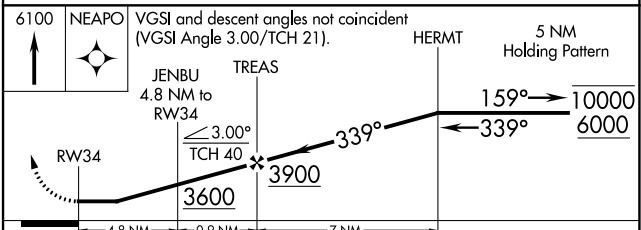
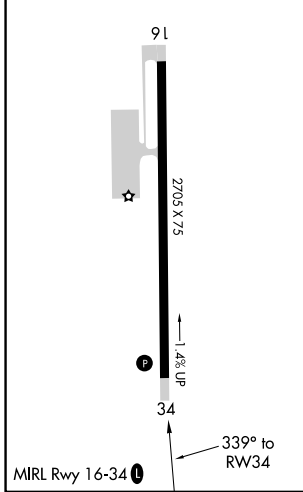
NA Circling NA west of Rwy 16-34. Rwy 34 helicopter visibility reduction below 1 SM NA. Procedure NA at night. Use Ukiah altimeter setting; when not received, procedure NA.

MISSED APPROACH: Climb to 6100 direct NEAPO and hold, continue climb-in-hold to 6100.

UKI ASOS 119.275	OAKLAND CENTER 132.2 350.3	UNICOM 122.8 (CTAF)
----------------------------	--------------------------------------	-------------------------------



ELEV 2066	TDZE 2066
-----------	-----------



CATEGORY	A	B	C	D
LNAV MDA	3060-1¼ 994 (1000-1¼)	3060-1½ 994 (1000-1½)	3060-3 994 (1000-3)	NA
CIRCLING	3060-1¼ 994 (1000-1¼)	3060-1½ 994 (1000-1½)	3580-3 1514 (1600-3)	NA

SW-2, 18 APR 2024 to 16 MAY 2024

SW-2, 18 APR 2024 to 16 MAY 2024