

ALAMOGORDO, NEW MEXICO

HI-ILS or LOC RWY 22

LOC I-HMN 111.7	APCH CRS 218°	Rwy ldg 10,578 TDZE 4083 Arprt Elev 4093
---------------------------	-------------------------	--

AL-7 [USAF]

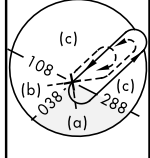
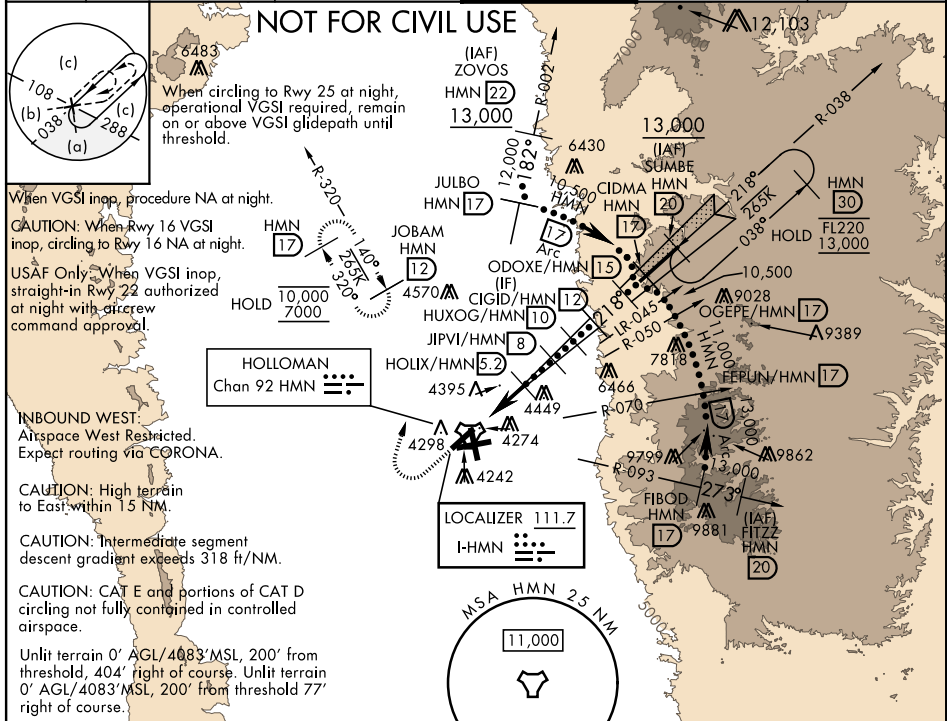
HOLLOMAN AFB (KHMM)

RADAR or DME required.
 *When ALS inop, increase vis to 3/4 miles.
 **When ALS inop, increase vis to 1 1/4 miles.



MISSED APPROACH: Climb straight ahead to 7000, passing 5000 turn right and intercept HMN R-320 tower to JOBAM and hold.

ATIS ★ 273.5	ALBUQUERQUE CENTER 132.65 257.6	APP CON 120.6 269.225	TOWER ★ 119.3 254.4	GND CON 127.05 275.8	CLNC DEL 126.7 289.4
------------------------	---	---------------------------------	-------------------------------	--------------------------------	--------------------------------



NOT FOR CIVIL USE

When circling to Rwy 25 at night, operational VGSi required, remain on or above VGSi glidepath until threshold.

When VGSi inop, procedure NA at night.

CAUTION: When Rwy 16 VGSi inop, circling to Rwy 16 NA at night.

USAF Only: When VGSi inop, straight-in Rwy 22 authorized at night with aircrew command approval.

INBOUND WEST:
 Airspace West Restricted.
 Expect routing via CORONA.

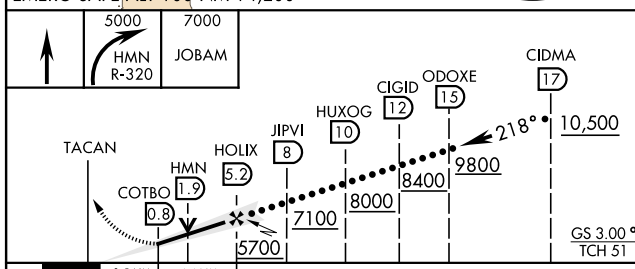
CAUTION: High terrain to East within 15 NM.

CAUTION: Intermediate segment descent gradient exceeds 318 ft/NM.

CAUTION: CAT E and portions of CAT D circling not fully contained in controlled airspace.

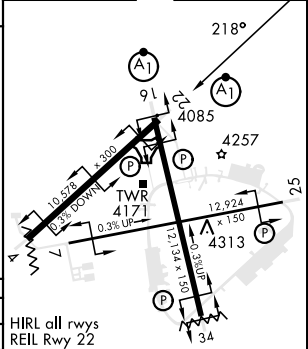
Unlit terrain 0' AGL/4083' MSL, 200' from threshold, 404' right of course. Unlit terrain 0' AGL/4083' MSL, 200' from threshold 77' right of course.

EMERG SAFE ALT 100 NM 14,200



CATEGORY	C	D	E
S-ILS 22*	4283-1/2	200 (200-1/2)	
S-LOC 22**	4680-1 1/4	597 (600-114)	
CIRCLING	4680-1 3/4 587 (600-134)	4740-2 647 (700-2)	4780-2 1/2 687 (700-2 1/2)

ELEV 4093	TDZE 4083
-----------	-----------



FAF to MAP 4.4 NM					
Knots	120	140	160	180	200
Min:Sec	2:12	1:53	1:39	1:28	1:19

ALAMOGORDO, NEW MEXICO

32°52'N - 106°06'W

HOLLOMAN AFB (KHMM)

Amtd 2 10AUG23

HI-ILS or LOC RWY 22

SW-1, 16 MAY 2024 to 13 JUN 2024

SW-1, 16 MAY 2024 to 13 JUN 2024