

APCH CRS 218°	Rwy Idg TDZE Arprt Elev	10,578 4083 4093
-------------------------	-------------------------------	---

AL-7 (USAF)

HOLLOMAN AFB (KHMN)

RNP APCH-GPS

V * When ALS inop, increase CAT AB vis to 7/8 mile; CAT CDE vis to 1 mile.
 ** When ALS inop, increase CAT AB vis to 1 mile; CAT CDE vis to 1 1/4 miles.



MISSED APPROACH: Climb to 5000 then climbing right turn to 7000 direct JOBAM, do not exceed 265 KIAS until turn completion and hold.

ATIS * 273.5	ALBUQUERQUE CENTER 132.65 257.6	APP CON 120.6 269.225	TOWER * 119.3 254.4	GND CON 127.05 275.8	CLNC DEL 126.7 289.4
------------------------	---	---------------------------------	-------------------------------	--------------------------------	--------------------------------

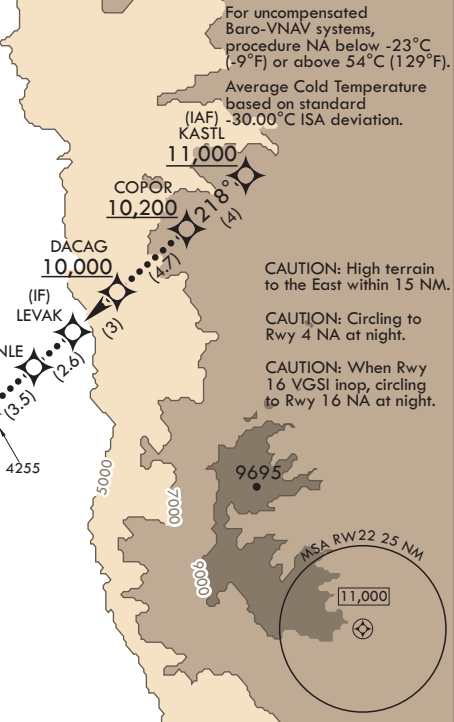
*** When Circling to Rwy 25 at Night, operational VGSi required, remain on or above VGSi glidepath until threshold. Circling Visibility Reduction by Helicopters NA.

Visibility reduction by helicopters NA.

INBOUND WEST: Airspace West Restricted. Expect routing via CORONA.

Unlit terrain 4083' MSL 200' from threshold, 400' right of course.

Unlit terrain 4083' MSL 200' from threshold, 72' right of course.



For uncompensated Baro-VNAV systems, procedure NA below -23°C (-9°F) or above 54°C (129°F).

Average Cold Temperature based on standard (IAF) KASTL -30.00°C ISA deviation.

CAUTION: High terrain to the East within 15 NM.

CAUTION: Circling to Rwy 4 NA at night.

CAUTION: When Rwy 16 VGSi inop, circling to Rwy 16 NA at night.

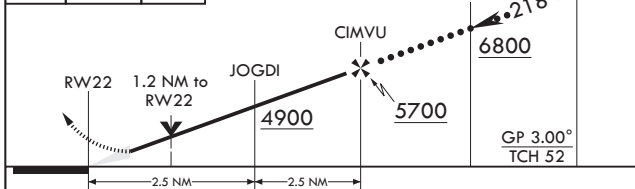
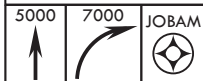
When VGSi inop, procedure NA at night.

USAF Only: When VGSi inop, straight-in Rwy 22 authorized at night with aircrew command approval.

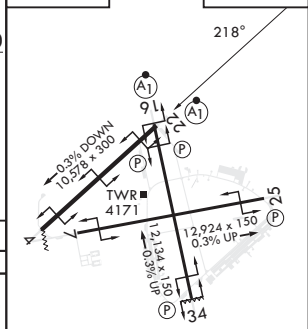
CAUTION: CAT E and portions of CAT D circling not fully contained in controlled airspace.

NOT FOR CIVIL USE

EMERG SAFE ALT 100 NM 14,200



ELEV 4093	TDZE 4083
-----------	-----------



CATEGORY	A	B	C	D	E
LNAV/VNAV DA*	4385-½ 302 (300-½)	4396-½ 313 (400-½)	4404-½ 321 (400-½)	4415-½	332 (400-½)
LNAV MDA**	4520-½	437 (500-½)	4520-¾	437	(500-¾)
C CIRCLING***	4620-1	527 (600-1)	4660-1½ 567 (600-1½)	4740-2 647 (700-2)	4780-2½ 687 (700-2½)

HIRL all Rwy
REIL Rwy 22

SW-1, 16 MAY 2024 to 13 JUN 2024

SW-1, 16 MAY 2024 to 13 JUN 2024