

# HI-TACAN RWY 16

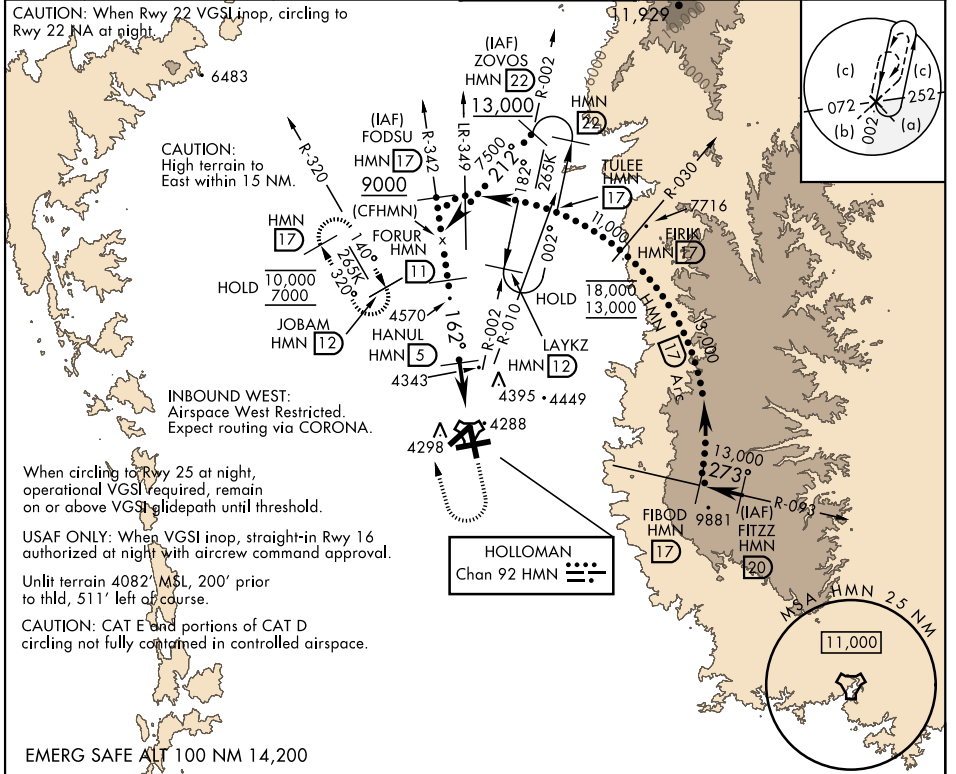
TACAN HMN Chan <b>92</b>	APCH CRS <b>162°</b>	Rwy ldg <b>12,134</b> TDZE <b>4083</b> Arprt Elev <b>4093</b>
-----------------------------	-------------------------	---

AL-7 [USAF]

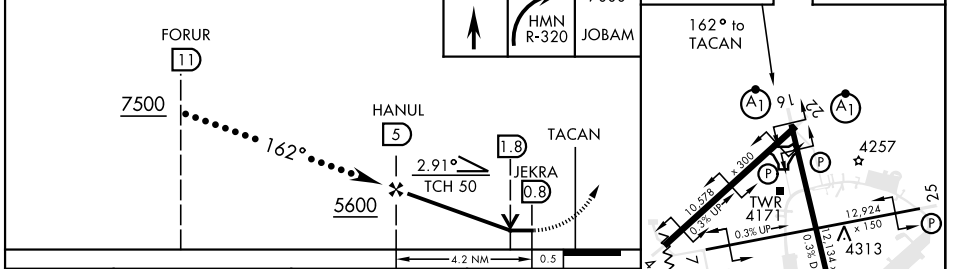
HOLLOMAN AFB (KHMN)

<b>▽</b> * When ALS inop, increase CAT CDE vis to 1½ miles. When VGSi inop, procedure NA at night.	ALSf-1 	MISSED APPROACH: Climb straight ahead to 7000, passing 5000 turn right and intercept HMN R-320 outbound to JOBAM and hold.
---	------------	--

ATIS * <b>273.5</b>	ALBUQUERQUE CENTER <b>132.65 257.6</b>	APP CON <b>120.6 269.225</b>	TOWER * <b>119.3 254.4</b>	GND CON <b>127.05 275.8</b>	CLNC DEL <b>126.7 289.4</b>
------------------------	---	---------------------------------	-------------------------------	--------------------------------	--------------------------------



EMERG SAFE ALT 100 NM 14,200



CATEGORY	C	D	E
S-16 *	4620-1	537 (600-1)	
<b>C</b> CIRCLING	4680-1½ 587 (600-1½)	4740-2 647 (700-2)	4780-2½ 687 (700-2½)

ALAMOGORDO, NEW MEXICO 32°52'N-106°06'W HOLLOMAN AFB (KHMN)

Amdt 1 16JUN22

# HI-TACAN RWY 16

SW-1, 16 MAY 2024 to 13 JUN 2024

SW-1, 16 MAY 2024 to 13 JUN 2024