

# OHDEE ONE DEPARTURE

AL-7 [USAF]

HOLLOMAN AFB (KHMN)  
ALAMOGORDO, NEW MEXICO

ATIS ★ 273.5  
 CLNC DEL 126.7 289.4  
 GND CON 127.05 275.8  
 TOWER ★ 119.3 254.4  
 DEP CON 128.1 284.0  
 ALBUQUERQUE CENTER 132.65 257.6

RADAR required

Rwy	Knots	60	120	180	240	300	360
04 (a)	V/V(fpm)	477	954	1431	1908	2385	2862
16 (b)	V/V(fpm)	501	1002	1503	2004	2505	3006
34 (c)	V/V(fpm)	458	916	1374	1832	2290	2748

Minimum Climb Rate

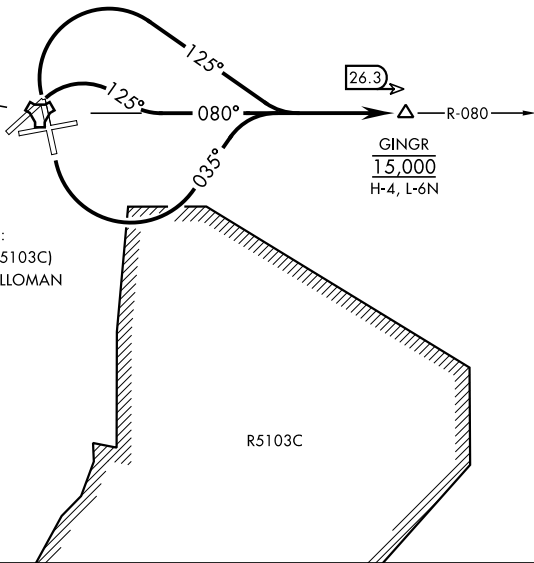
11,929

(a) to 11,500

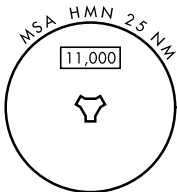
(b) to 12,000

## MILITARY USE ONLY

HOLLOMAN  
 Chan 92 HMN



TAKEOFF RWY 16:  
 Northern buffer (R-5103C)  
 must be under HOLLOMAN  
 APP CON.



### DEPARTURE ROUTE DESCRIPTION

**TAKEOFF RWY 4:** Climbing right turn to track 125°, intercept HMN R-080 to GINGR.  
 Cross GINGR at 15,000.

**TAKEOFF RWY 16:** Climbing left turn to track 035°, intercept HMN R-080 to GINGR.  
 Cross GINGR at 15,000.

**TAKEOFF RWY 34:** Climbing right turn to track 125°, intercept HMN R-080 to GINGR.  
 Cross GINGR at 15,000.

# OHDEE ONE DEPARTURE

Amdt1 10AUG23

ALAMOGORDO, NEW MEXICO  
HOLLOMAN AFB (KHMN)

SW-1, 16 MAY 2024 to 13 JUN 2024

SW-1, 16 MAY 2024 to 13 JUN 2024