

WAAS CH 53613 W23A	APP CRS 227°	Rwy Idg TDZE Apt Elev	6601 192 196
--	------------------------	-----------------------------	---

RNAV (GPS) RWY 23

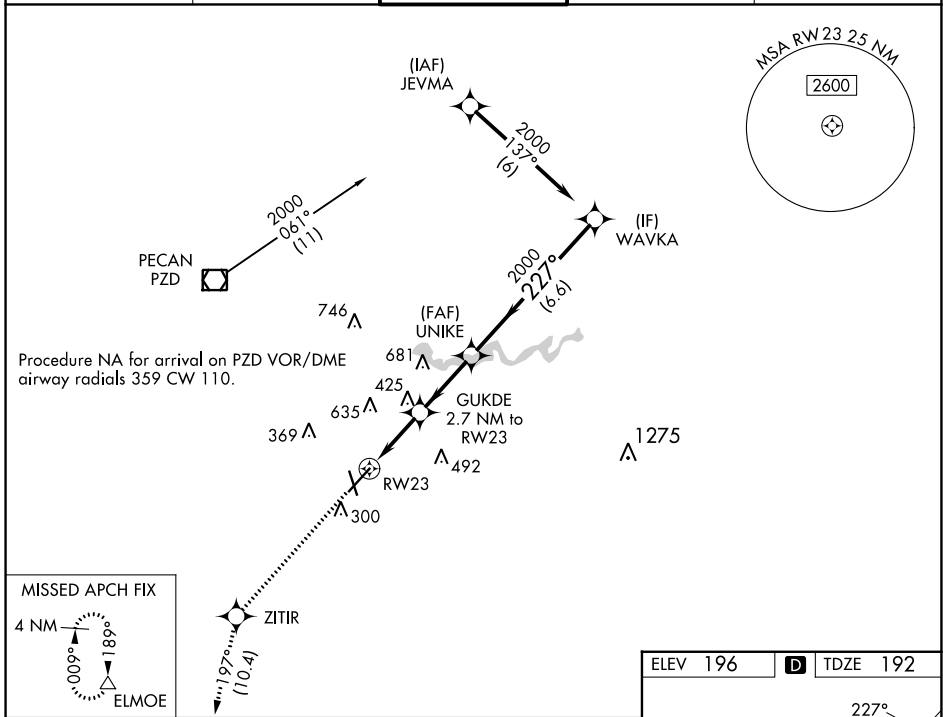
SOUTHWEST GEORGIA RGNL (ABY)

RNP APCH.

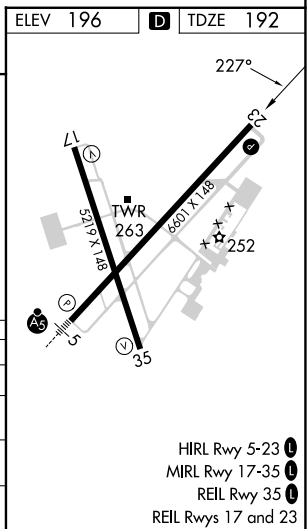
▼ For uncompensated Baro-VNAV systems, LNAV/VNAV NA
▲ below -7°C or above 54°C.

MISSED APPROACH: Climb to 3000 direct ZITIR and on track 197° to ELMOE and hold.

ATIS 133.05	JACKSONVILLE CENTER 125.75 363.075	ALBANY TOWER * 120.25 (CTAF) 0336.4	GND CON 121.9 348.6	UNICOM 122.95
-----------------------	--	---	-------------------------------	-------------------------



3000	ZITIR	ELMOE		
	tr 197°	△		
*LNAV only.				
	RWY 23	GUKDE 2.7 NM to RWY 23	UNIKE 2000	WAVKA 2000
	1.4 NM to RWY 23	1100	227°	GP 3.00° TCH 52
	1.4 NM	1.3 NM	2.7 NM	6.6 NM
CATEGORY	A	B	C	D
LPV DA		531-1¼	339 (400-1¼)	
LNAV/VNAV DA		611-1½	419 (500-1½)	
LNAV MDA	680-1	488 (500-1)	680-1¼ 488 (500-1¼)	680-1½ 488 (500-1½)
CIRCLING	680-1	484 (500-1)	940-2¼ 744 (800-2¼)	940-2½ 744 (800-2½)



- HIRL Rwy 5-23
- MIRL Rwy 17-35
- REIL Rwy 35
- REIL Rwy 17 and 23

SE-4, 16 MAY 2024 to 13 JUN 2024

SE-4, 16 MAY 2024 to 13 JUN 2024