

ALBANY, GEORGIA

AL-8 (FAA)

23334

WAAS CH 78000 W05A	APP CRS 047°	Rwy Idg 6601 TDZE 196 Apt Elev 196
---------------------------------	------------------------	---

RNAV (GPS) RWY 5

SOUTHWEST GEORGIA RGNL (A.B.Y)

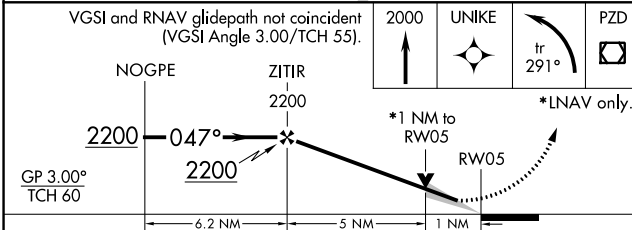
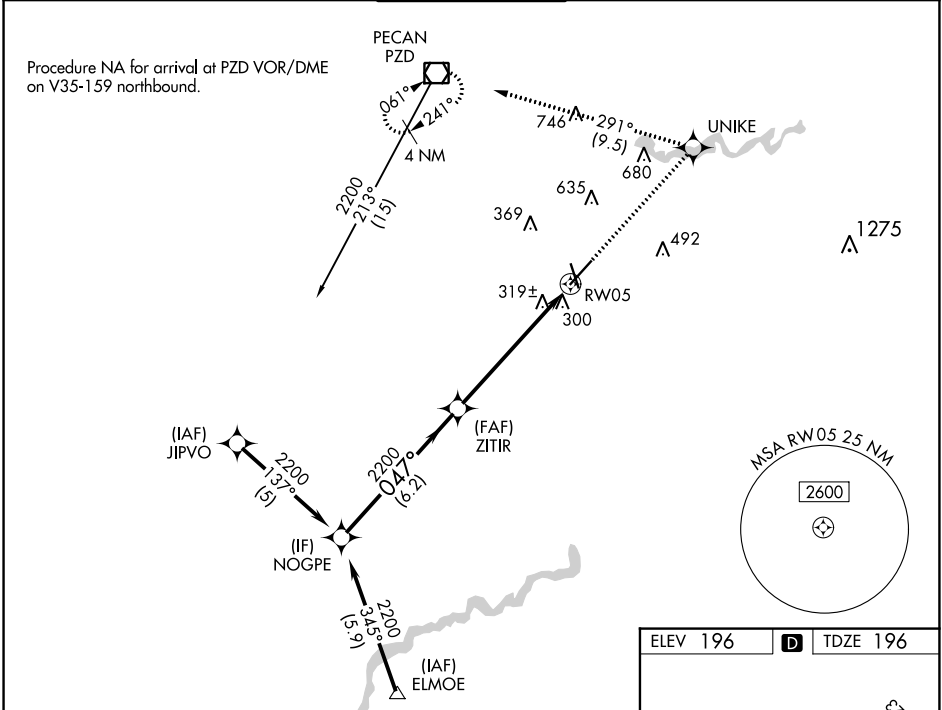
RNP APCH.

▼ For uncompensated Baro-VNAV systems, LNAV/VNAV NA below -7°C or above 54°C. For inop ALS, increase LNAV Cat D visibility to RVR 6000.
 ▲ ** RVR 1800 authorized with use of FD or AP or HUD to DA.



MISSED APPROACH: Climb to 2000 direct UNIKE and left turn on track 291° to PZD VOR/DME and hold.

ATIS 133.05	JACKSONVILLE CENTER 125.75 363.075	ALBANY TOWER * 120.25 (CTAF) 0336.4	GND CON 121.9 348.6	UNICOM 122.95
-----------------------	--	---	-------------------------------	-------------------------



ELEV 196	D	TDZE 196
----------	----------	----------

HIRL Rwy 5-23
 MIRL Rwy 17-35
 REIL Rwy 35
 REIL Rwy 17 and 23

CATEGORY	A	B	C	D
LPV DA**		396/24	200 (200-½)	
LNAV/VNAV DA		635/50	439 (500-1)	
LNAV MDA	580/24	384 (400-½)		580/50 384 (400-1)
C CIRCLING	640-1 444 (500-1)	660-1 464 (500-1)	940-2¼ 744 (800-2¼)	940-2½ 744 (800-2½)

ALBANY, GEORGIA
 Amdt 1D 26MAR20

31°32'N-84°12'W

SOUTHWEST GEORGIA RGNL (A.B.Y)

RNAV (GPS) RWY 5

SE-4, 16 MAY 2024 to 13 JUN 2024

SE-4, 16 MAY 2024 to 13 JUN 2024