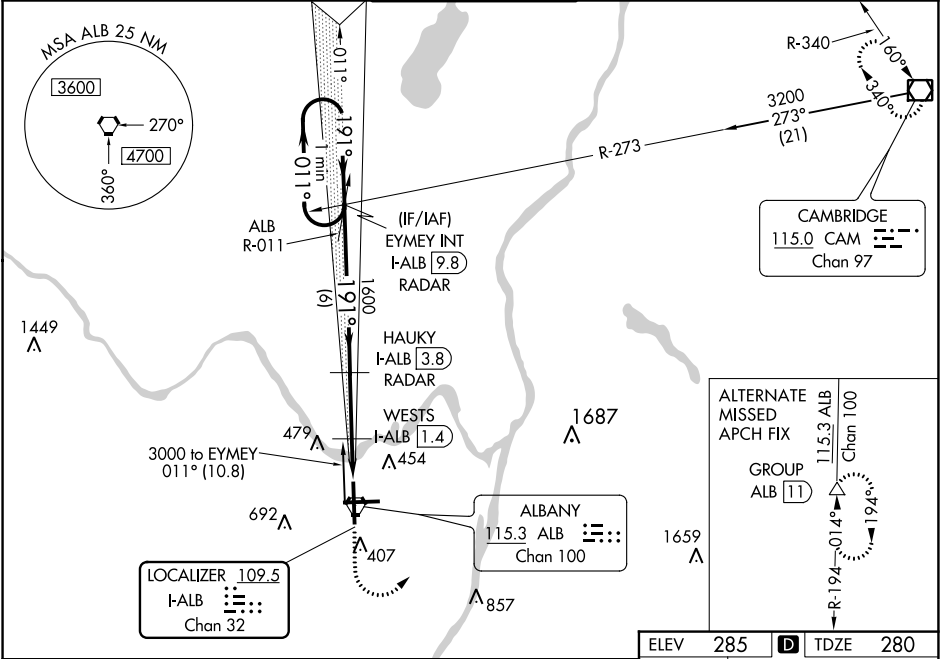


LOC/DME I-ALB 109.5 Chan 32	APP CRS 191°	Rwy Idg 8500 TDZE 280 Apt Elev 285
-------------------------------------------------	------------------------	---------------------------------------------------------------

ILS or LOC RWY 19

ALBANY INTL (ALB)

<p>Circling NA west of Rwy 1-19. Circling Rwy 10 NA at night. DME or RADAR required.</p>	<p>MALS/R</p>	<p>MISSED APPROACH: Climb to 2000 then climbing left turn to 5000 direct CAM VOR/DME and hold.</p>		
		D-ATIS 120.45	ALBANY APP CON 132.825 307.2	ALBANY TOWER 119.5 257.8



NE-2, 16 MAY 2024 to 13 JUN 2024

NE-2, 16 MAY 2024 to 13 JUN 2024

One Minute Holding Pattern		EYMEY INT I-ALB [9.8] RADAR	HAUKY I-ALB [3.8] RADAR	WESTS I-ALB [1.4] RADAR	ALBANY 115.3 ALB Chan 100	ELEV 285	TDZE 280	
<p>2000 ← 011° → 191°</p> <p>GS 3.00° TCH 54 Use I-ALB DME when on the localizer course.</p>		2000	1600	1600	820	2000	5000	
<p>6 NM</p> <p>2.4 NM</p> <p>0.7 NM</p> <p>0.9 NM</p>		<p>* LOC only.</p>		<p>CAM</p>				
CATEGORY	A	B	C	D				
S-ILS 19	480/18 200 (200-½)							
S-LOC 19	820/24	540 (600-½)	820/55	540 (600-1)				
CIRCLING	820-1	535 (600-1)	860-1½	960-2¼				
WESTS FIX MINIMUMS								
S-LOC 19	620/24	340 (400-½)	620/26	340 (400-½)				
CIRCLING	820-1	535 (600-1)	820-1½	960-2¼				
		Knots		60	90	120	150	180
		Min:Sec		4:00	2:40	2:00	1:36	1:20