

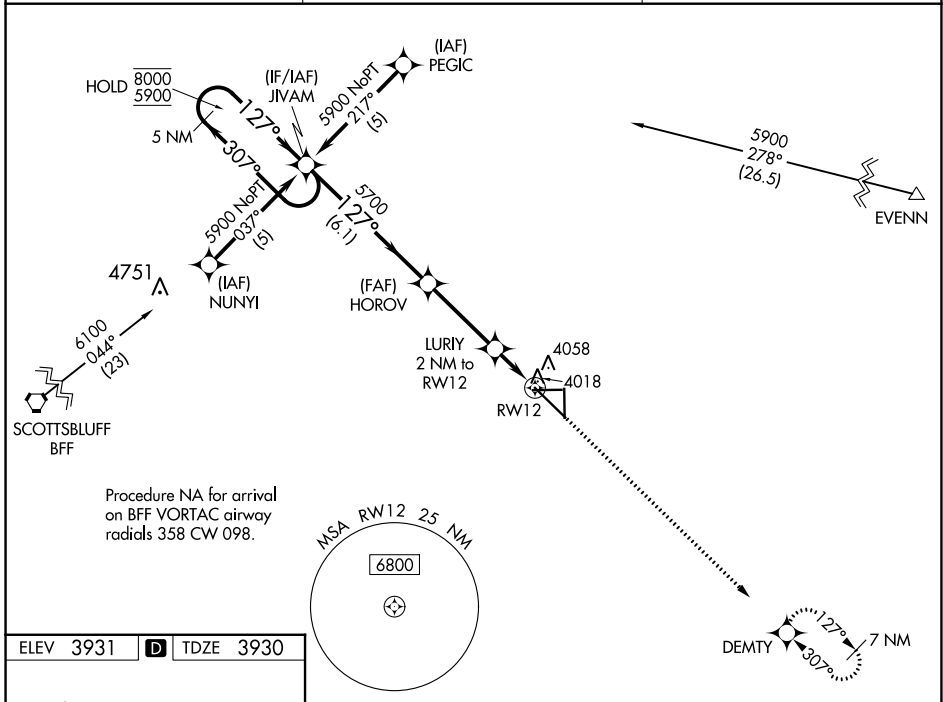
WAAS CH <b>61202</b> <b>W12A</b>	APP CRS <b>127°</b>	Rwy Idg <b>9202</b> TDZE <b>3930</b> Apt Elev <b>3931</b>
--	------------------------	---

# RNAV (GPS) RWY 12

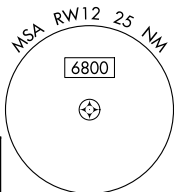
ALLIANCE MUNI (A1A)

RNP APCH. ⚠ For uncompensated Baro-VNAV systems, LNAV/VNAV NA below -22°C or above 54°C.	MISSED APPROACH: Climb to 6100 direct DEMTY and hold.
---	---

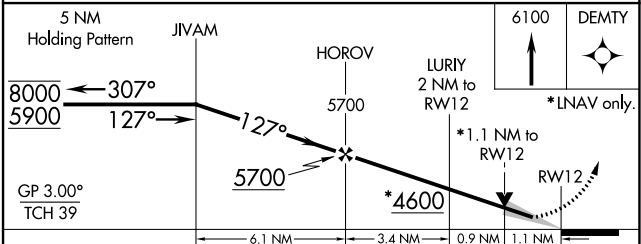
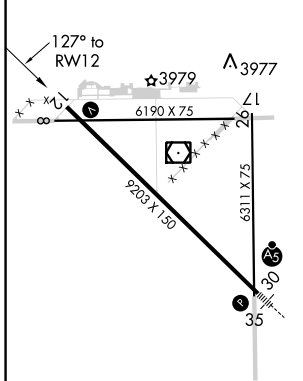
ASOS <b>135.075</b>	DENVER CENTER <b>127.95 338.2</b>	UNICOM <b>123.0 (CTAF) 0</b>
------------------------	--------------------------------------	---------------------------------



Procedure NA for arrival on BFF VORTAC airway radials 358 CW 098.



ELEV 3931	<b>D</b>	TDZE 3930
-----------	----------	-----------



CATEGORY	A	B	C	D
LPV DA	4180-1 250 (300-1)			
LNAV/VNAV DA	4273-1¼ 343 (400-1¼)			
LNAV MDA	4320-1	390 (400-1)	4320-1½ 390 (400-1½)	4320-1¼ 390 (400-1¼)
CIRCLING	4460-1 529 (600-1)	4520-1 589 (600-1)	4580-1¾ 649 (700-1¾)	4640-2¼ 709 (800-2¼)

REIL Rwy 12 0  
MIRL Rwy 8-26 and 12-30 0

NC-2, 16 MAY 2024 to 13 JUN 2024

NC-2, 16 MAY 2024 to 13 JUN 2024