

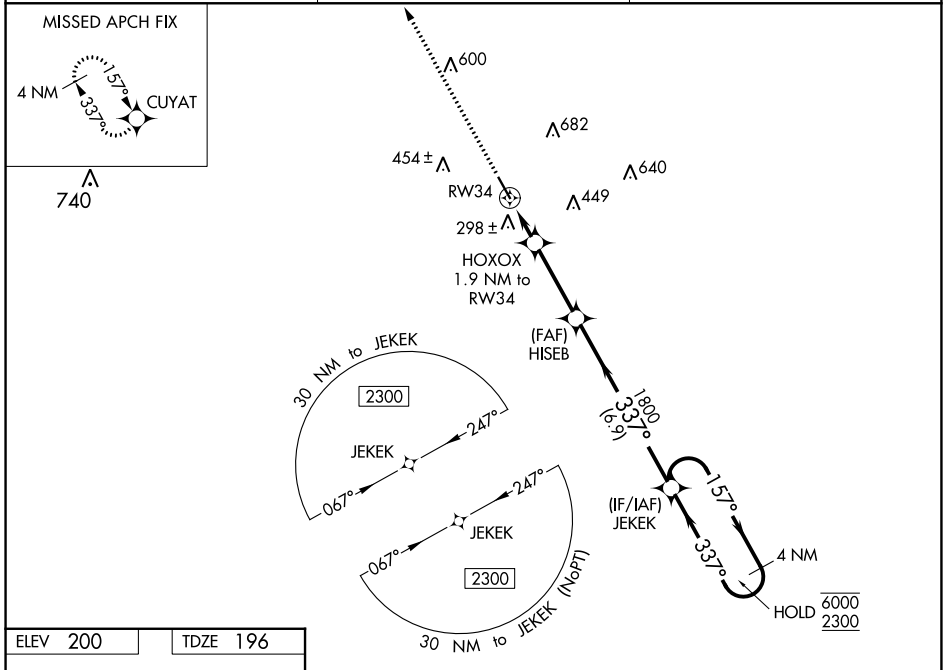
WAAS CH 70635 W34A	APP CRS 337°	Rwy Idg TDZE Apt Elev	5000 196 200
----------------------------------------	------------------------	-----------------------------	-----------------------------------------

RNAV (GPS) RWY 34

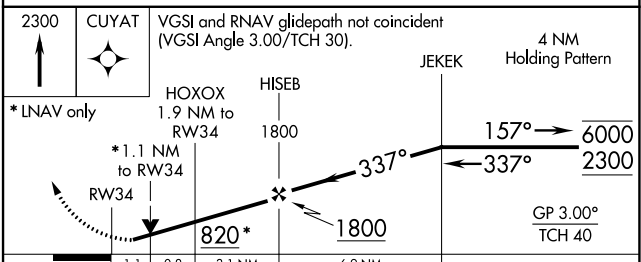
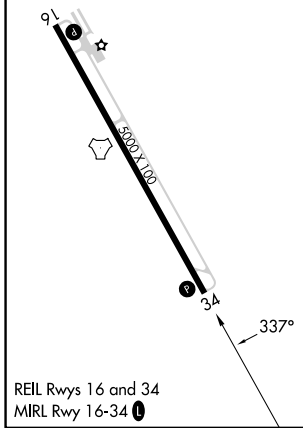
BACON COUNTY (AMG)

RNP APCH.	MISSED APPROACH: Climb to 2300 direct CUYAT and hold.
<p>▼ Rwy 34 helicopter visibility reduction below ¼ SM NA. ▲ For uncompensated Baro-VNAV systems, LNAV/VNAV NA below -4°C or above 54°C.</p>	

ASOS 118.325	JACKSONVILLE CENTER 127,575 269,025	UNICOM 122.7 (CTAF)
------------------------	-----------------------------------------------	-------------------------------



ELEV 200	TDZE 196
----------	----------



CATEGORY	A	B	C	D
LPV DA		452-¾	256 (300-¾)	
LNAV/VNAV DA		459-⅞	263 (300-⅞)	
LNAV MDA		560-1	364 (400-1)	
<input checked="" type="checkbox"/> CIRCLING	720-1	520 (600-1)	1000-2¼ 800 (800-2¼)	1000-2½ 800 (800-2½)

SE-4, 16 MAY 2024 to 13 JUN 2024

SE-4, 16 MAY 2024 to 13 JUN 2024