

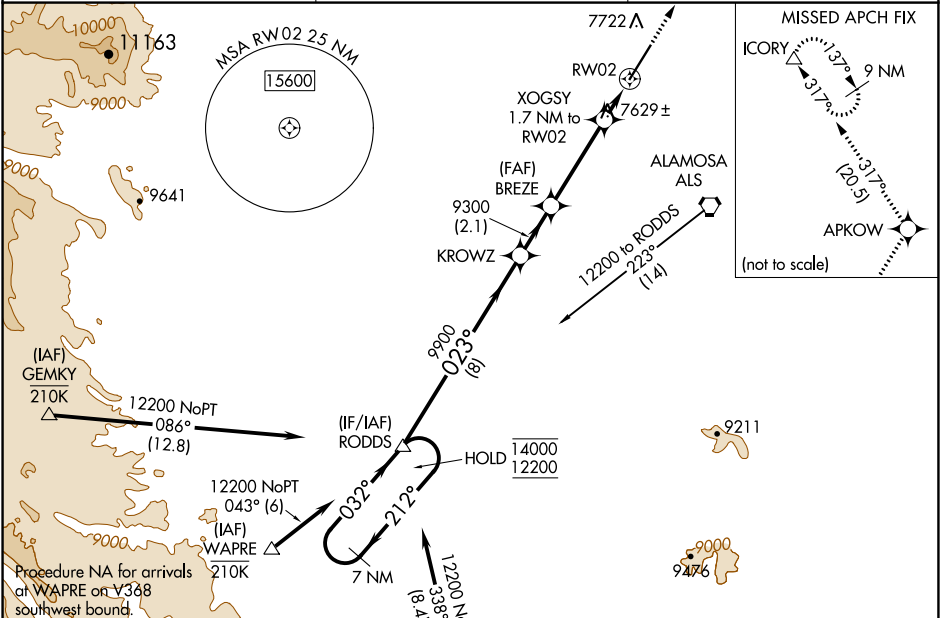
WAAS CH 90410 W02A	APP CRS 023°	Rwy Idg 8519 TDZE 7540 Apt Elev 7540
--	------------------------	---

RNAV (GPS) RWY 2

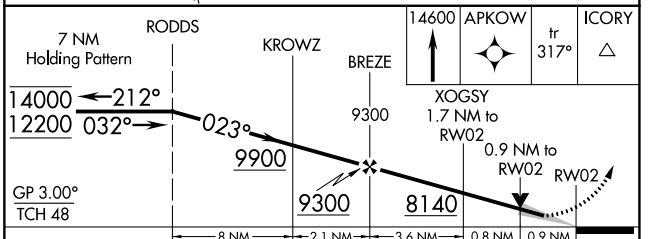
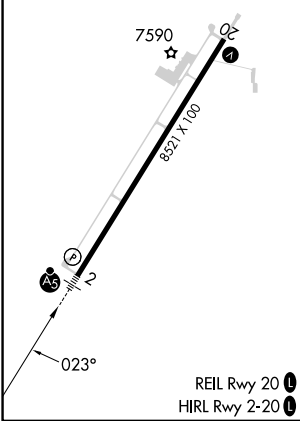
SAN LUIS VALLEY RGNL/BERGMAN FLD (ALS)

RNP APCH-GPS. ▼ For uncompensated Baro-VNAV systems, LNAV/VNAV NA below -31°C or above 54°C. For inop ALS, increase LNAV/VNAV all Cats visibility to 3/4 SM. ⚠ -26°C	MALSR AS	MISSED APPROACH: Climb to 14600 direct APKOW and on track 317° to ICORY and hold, continue climb-in-hold to 14600.
--	-------------	--

ASOS 135.175	DENVER CENTER 128.375 379.95	UNICOM 122.8 (CTAF)
------------------------	--	-------------------------------



ELEV 7540	D	TDZE 7540
-----------	---	-----------



CATEGORY	A	B	C	D
LPV DA		7740-1/2	200 (200-1/2)	
LNAV/VNAV DA		7790-1/2	250 (300-1/2)	
LNAV MDA		7880-1/2	340 (400-1/2)	
CIRCLING	8040-1	500 (500-1)	8080-1 1/2 540 (600-1 1/2)	8100-2 560 (600-2)

SW-1, 16 MAY 2024 to 13 JUN 2024

SW-1, 16 MAY 2024 to 13 JUN 2024