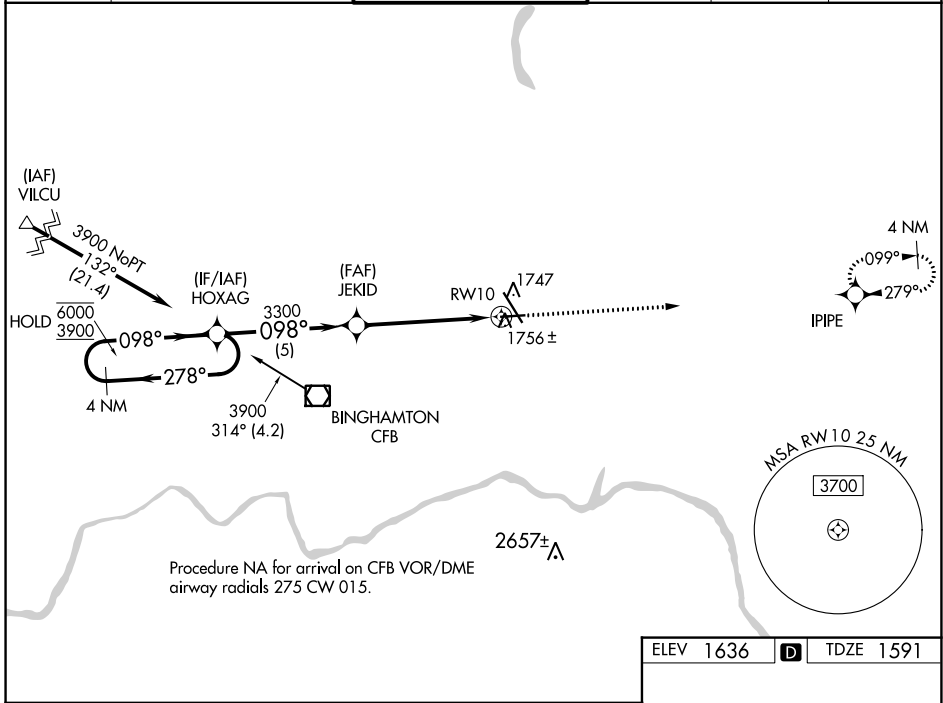


WAAS CH <b>93820</b> <b>W10A</b>	APP CRS <b>098°</b>	Rwy Idg TDZE Apt Elev	<b>5001</b> <b>1591</b> <b>1636</b>
--	------------------------	-----------------------------	---

# RNAV (GPS) RWY 10

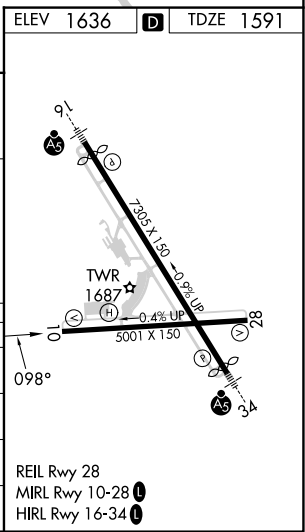
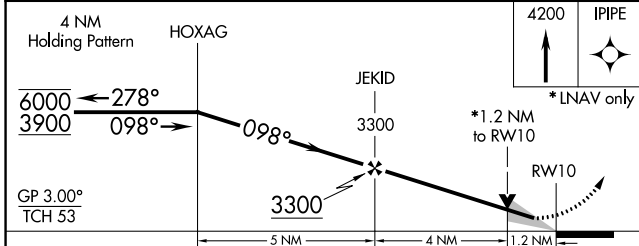
GREATER BINGHAMTON/EDWIN A LINK FLD (BGM)

RNP APCH. For uncompensated Baro-VNAV systems, LNAV/VNAV NA below -21°C or above 54°C.		MISSED APPROACH: Climb to 4200 direct IPIE and hold.			
ATIS <b>128.15</b>	BINGHAMTON APP CON * <b>118.6 257.625</b>	BINGHAMTON TOWER * <b>119.3 (CTAF) 0 239.25</b>	GND CON <b>121.9</b>	CLNC DEL <b>125.05</b>	UNICOM <b>122.95</b>



NE-2, 16 MAY 2024 to 13 JUN 2024

NE-2, 16 MAY 2024 to 13 JUN 2024



CATEGORY	A	B	C	D
LPV DA		1841-3/4	250 (300-3/4)	
LNAV/VNAV DA		1937-1	346 (400-1)	
LNAV MDA	2020-1	429 (400-1)	2020-1 1/4	429 (400-1 1/4)
CIRCLING	2120-1	484 (500-1)	2120-1 1/2	2200-2 564 (600-2)