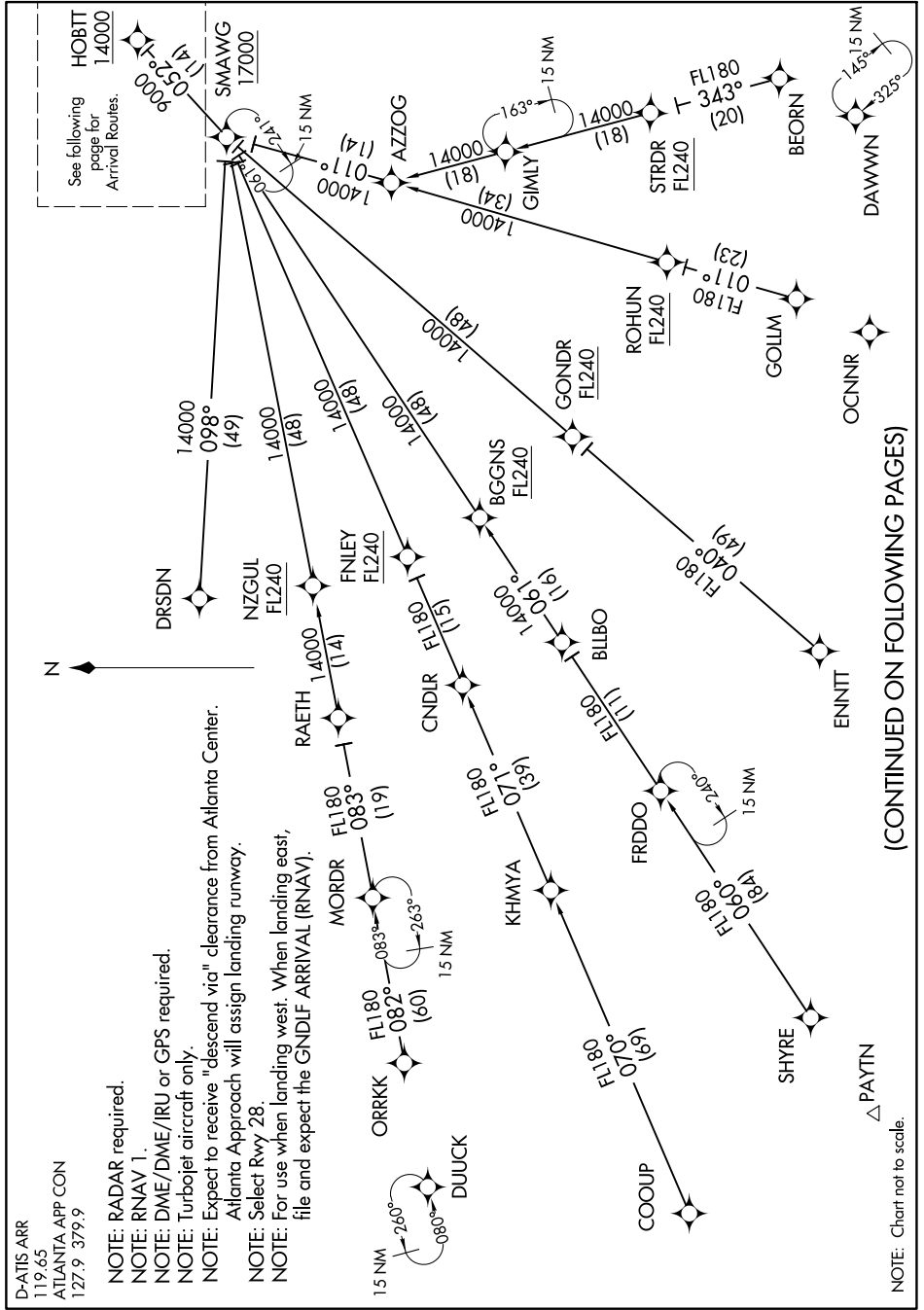


HOBT TWO ARRIVAL(RNAV) Transition Routes

SE-4, 16 MAY 2024 to 13 JUN 2024



D-ATIS ARR
119.65
ATLANTA APP CON
127.9 379.9

NOTE: RADAR required.

NOTE: RNAV 1.

NOTE: DME/DME/IRU or GPS required.

NOTE: Turbojet aircraft only.

NOTE: Expect to receive "descend via" clearance from Atlanta Center.
Atlanta Approach will assign landing runway.

NOTE: Select Rwy 28.

NOTE: For use when landing west. When landing east,
file and expect the GNDLF ARRIVAL (RNAV).

NOTE: Chart not to scale.

(CONTINUED ON FOLLOWING PAGES)

SE-4, 16 MAY 2024 to 13 JUN 2024

HOBT TWO ARRIVAL(RNAV) Transition Routes