

LOC/DME I-OMO 111.55 Chan 52 (Y)	APP CRS 095°	Rwy ldg 9000 TDZE 1000 Apt Elev 1026
--	------------------------	--

ILS RWY 10 (CAT II & III)

HARTSFIELD-JACKSON ATLANTA INTL (ATL)

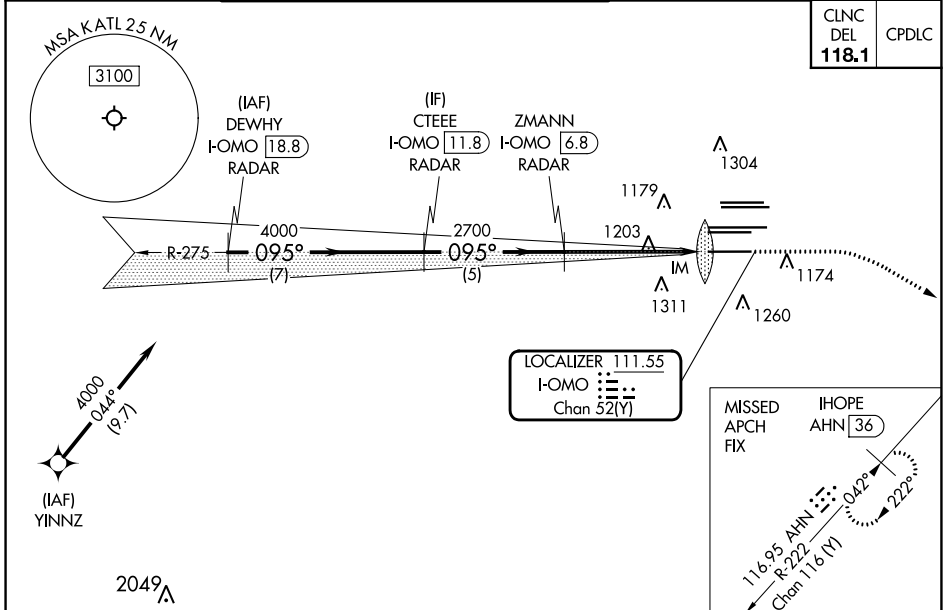
DME or RADAR required. RNP APCH - GPS from YNNZ.

Simultaneous approach authorized with Rwy 9L or 8R or 8L, or Rwy 9L and 8L.

ALSF-2

MISSED APPROACH: Climb to 1400 then climbing right turn to 3000 on heading 120° and AHN R-222 to IHOPE/AHN 36 DME and hold.

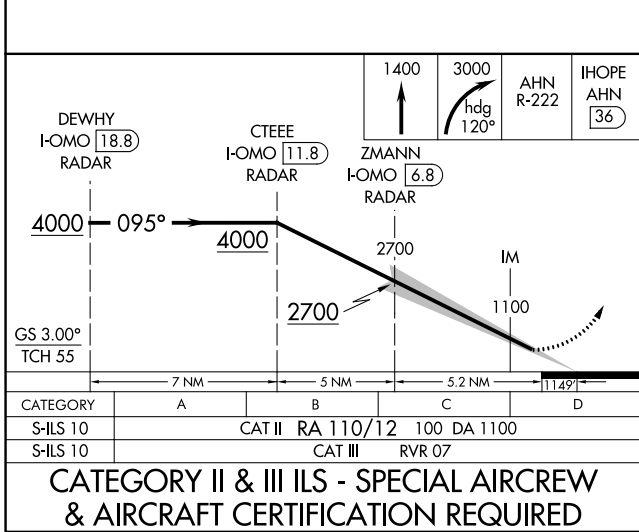
D-ATIS ARR 119.65 DEP 125.55	ATLANTA APP CON 127.9 379.9	ATLANTA TOWER 8L-26R 8R-26L 9L-27R 9R-27L 10-28 RWYS 119.1 125.325 123.85 119.3 119.5 254.4				ALL RWYS 254.4	GND CON (8L-26R,8R-26L) (9L-27R,9R-27L) 10-28 RWYS 121.9 121.75 121.65 254.4
--	--	--	--	--	--	-----------------------------	---



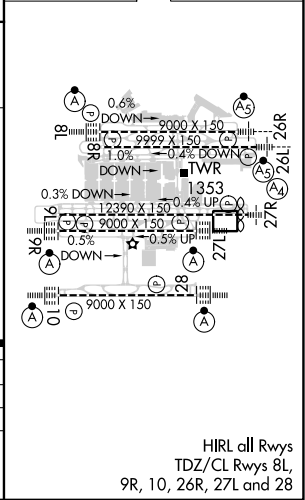
CLNC DEL 118.1	CPDLC
-----------------------------	-------

SE-4, 16 MAY 2024 to 13 JUN 2024

SE-4, 16 MAY 2024 to 13 JUN 2024



ELEV	1026	TDZE	1000
------	------	------	------



CATEGORY II & III ILS - SPECIAL AIRCREW & AIRCRAFT CERTIFICATION REQUIRED

HIRL all Rwy
TDZ/CL Rwy 8L,
9R, 10, 26R, 27L and 28