

LOC/DME I-OMO 111.55 Chan 52 (Y)	APP CRS 095°	Rwy ldg 9000 TDZE 1000 Apt Elev 1026
--	------------------------	---

ILS RWY 10 (SA CAT I)

HARTSFIELD-JACKSON ATLANTA INTL (ATL)

DME or RADAR required. RNP APCH - GPS from YINNZ.

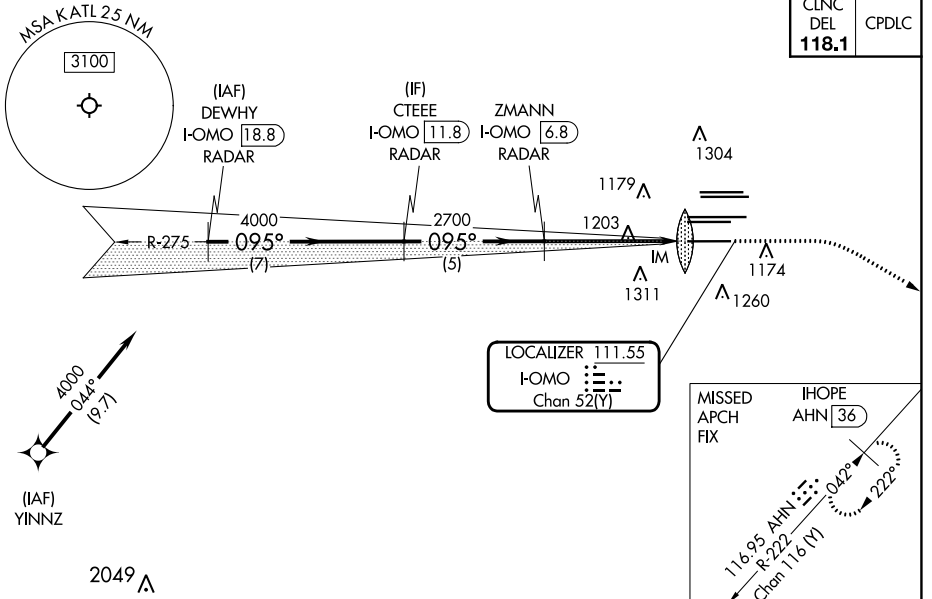
Simultaneous approach authorized with Rwy 9L or 8R or 8L, or Rwy 9L and 8L. Requires specific OPSPEC, MSPEC, or LOA approval and use of HUD to DH.

ALSf-2

MISSED APPROACH: Climb to 1400 then climbing right turn to 3000 on heading 120° and AHN R-222 to IHOPE/AHN 36 DME and hold.

D-ATIS ARR 119.65 DEP 125.55	ATLANTA APP CON 127.9 379.9	ATLANTA TOWER 8L-26R 8R-26L 9L-27R 9R-27L 10-28 RWYS 119.1 125.325 123.85 119.3 119.5 254.4	ALL RWYS 121.9	GND CON 121.75	ALL RWYS 121.65 254.4
--	--	--	--------------------------	--------------------------	---------------------------------

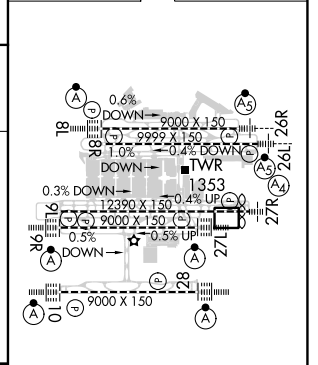
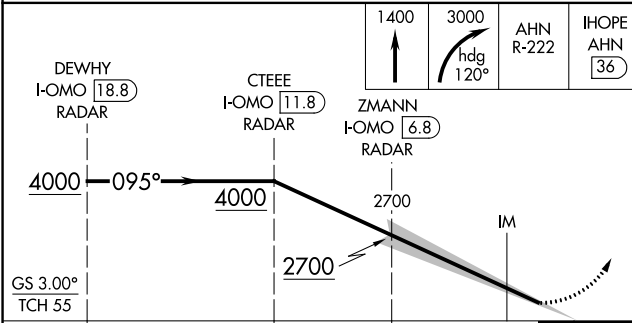
CLNC DEL 118.1	CPDLC
--------------------------	-------



SE-4, 16 MAY 2024 to 13 JUN 2024

SE-4, 16 MAY 2024 to 13 JUN 2024

ELEV 1026	TDZE 1000
------------------	------------------



CATEGORY	A	B	C	D
S-ILS 10	RA 180/14 150 DA 1150			
SA CATEGORY I ILS - SPECIAL AIRCREW & AIRCRAFT CERTIFICATION REQUIRED				



HIRL all Rwy's
TDZ/CL Rwy's 8L,
9R, 10, 26R, 27L and 28