

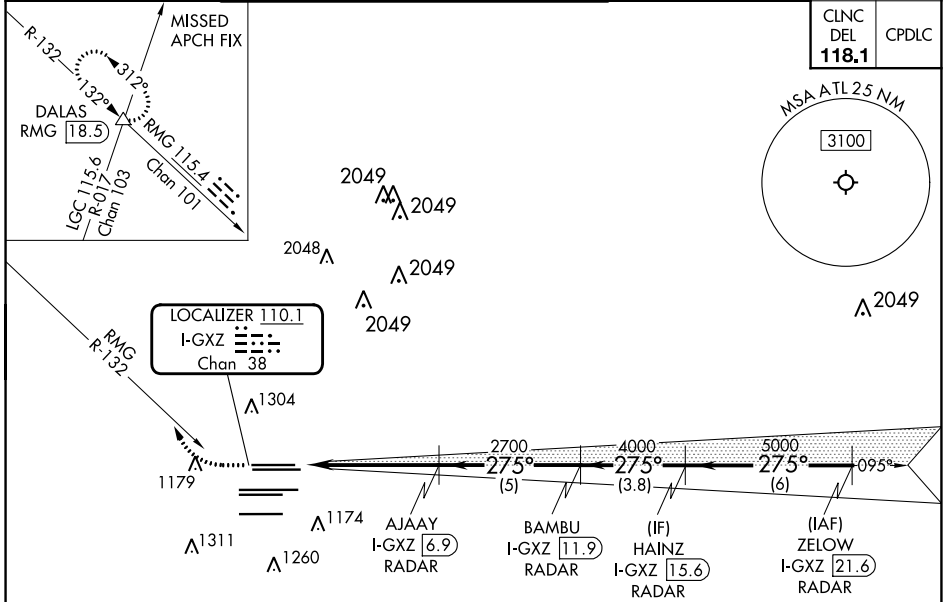
LOC/DME I-GXZ 110.1 Chan 38	APP CRS 275°	Rwy ldg TDZE Apt Elev 8500 990 1026
---	------------------------	---

ILS RWY 26R (SA CAT I & II)

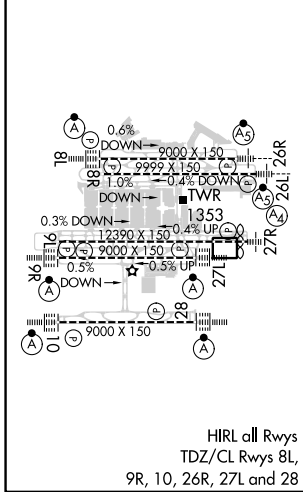
HARTSFIELD-JACKSON ATLANTA INTL (ATL)

RADAR required.		MALSR	MISSED APPROACH: Climb to 1800 then climbing right turn to 4000 on RMG VORTAC R-132 to DALAS INT/RMG 18.5 DME and hold.
SA CAT I/II: Requires specific OPSPEC, MSPEC, or LOA approval. Simultaneous approach authorized.			

D-ATIS ARR 119.65	ATLANTA APP CON DEP 127.9 379.9	ATLANTA TOWER 8L-26R 8R-26L 9L-27R 9R-27L 10-28 RWYS 119.1 125.325 123.85 119.3 119.5 254.4	ALL RWYS 121.9	GND CON (8L-26R,8R-26L) (9L-27R,9R-27L) 10-28 RWYS 121.75 121.65 254.4	ALL RWYS
-----------------------------	--	--	-----------------------------	---	-------------



ELEV 1026	D	TDZE 990
-----------	----------	----------



1800	4000	DALAS	VGSI and ILS glidepath not coincident (VGSI Angle 3.00/TCH 69).	
			AJAAY I-GXZ [6.9] RADAR	ZELOW I-GXZ [21.6] RADAR
			BAMBUR I-GXZ [11.9] RADAR	HAINZ I-GXZ [15.6] RADAR
			2700	275° 5000
			4000	5000
			5.2 NM	5 NM
			3.8 NM	6 NM
			GS 3.00°	TCH 55
CATEGORY	A	B	C	D
S-ILS 26R	SA CAT I RA 170/14 150 DA 1140			
S-ILS 26R	SA CAT II RA 110/12 100 DA 1090			

SA CATEGORY I & II ILS - SPECIAL AIRCREW & AIRCRAFT CERTIFICATION REQUIRED

SE-4, 16 MAY 2024 to 13 JUN 2024

SE-4, 16 MAY 2024 to 13 JUN 2024