

ATLANTA, GEORGIA

AL-26 (FAA)

24137

LOC/DME I-FSQ 108.5 Chan 22	APP CRS 275°	Rwy Idg TDZE Apt Elev	8865 999 1026
--	------------------------	-----------------------------	--

ILS RWY 27L (CAT II)

HARTSFIELD-JACKSON ATLANTA INTL (ATL)

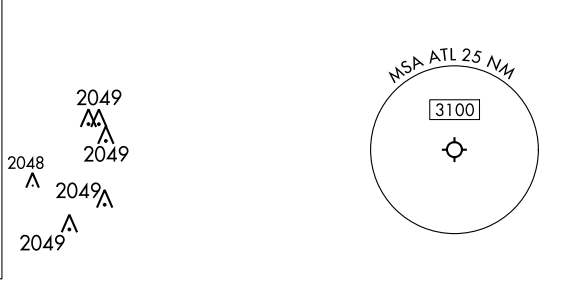
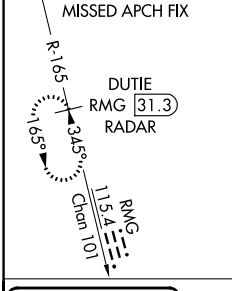
DME or RADAR required.
RADAR required for procedure entry.

Simultaneous approach authorized.



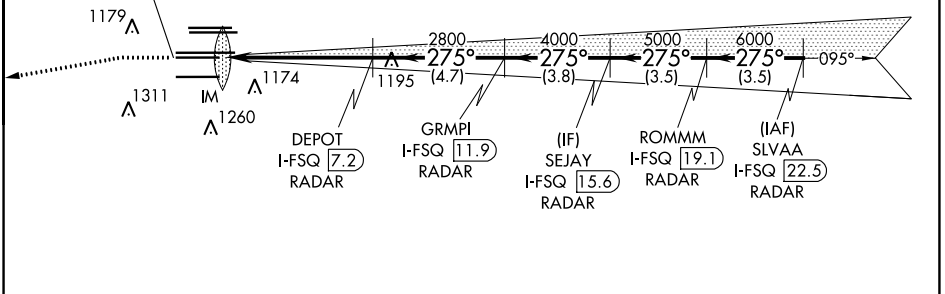
MISSED APPROACH: Climb to 1500 then climbing left turn to 4000 on heading 265° and RMG VORTAC R-165 to DUTIE/RMG 31.3 DME/RADAR and hold.

D-ATIS ARR 119.65	ATLANTA APP CON DEP 125.55	ATLANTA TOWER 8L-26R 8R-26L 9L-27R 9R-27L 10-28 RWYS	ALL RWYS 119.1 125.325 123.85 119.3 119.5 254.4	GND CON (8L-26R,8R-26L) (9L-27R,9R-27L) 10-28 RWYS	ALL RWYS 121.9 121.75 121.65 254.4
-----------------------------	---	---	--	---	---

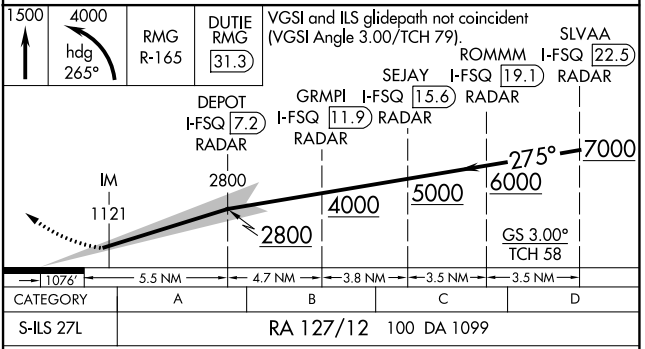
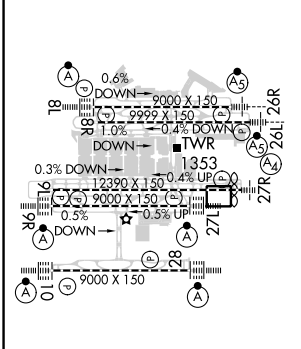


CINC DEL 118.1	CPDLC
-----------------------------	-------

LOCALIZER 108.5 I-FSQ Chan 22	1304
-------------------------------------	------



ELEV 1026	D	TDZE 999
-----------	----------	----------



CATEGORY	A	B	C	D
S-ILS 27L	RA 127/12 100 DA 1099			

CATEGORY II ILS- SPECIAL AIRCREW & AIRCRAFT CERTIFICATION REQUIRED

ATLANTA, GEORGIA
Amdt 19 22APR21

HARTSFIELD-JACKSON ATLANTA INTL (ATL)
33°38'N-84°26'W

ILS RWY 27L (CAT II)

SE-4, 16 MAY 2024 to 13 JUN 2024

SE-4, 16 MAY 2024 to 13 JUN 2024