

ATLANTA, GEORGIA

AL-26 (FAA)

24137

LOC/DME I-FSQ 108.5 Chan 22	APP CRS 275°	Rwy ldg TDZE Apt Elev	8865 999 1026
--	------------------------	-----------------------------	--

ILS RWY 27L (SA CAT I)

HARTSFIELD-JACKSON ATLANTA INTL (ATL)

DME or RADAR required.
RADAR required for procedure entry.

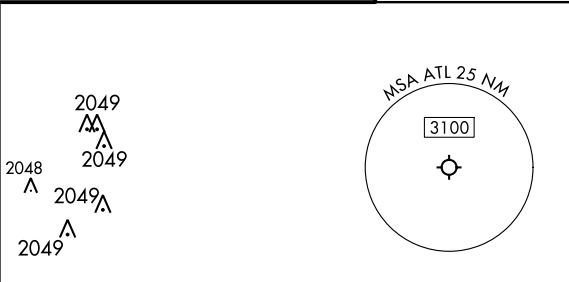
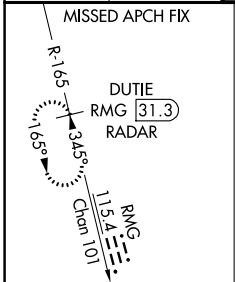
Simultaneous approach authorized.
Requires specific OPSPEC, MSPEC, or LOA approval.

ALSF-2



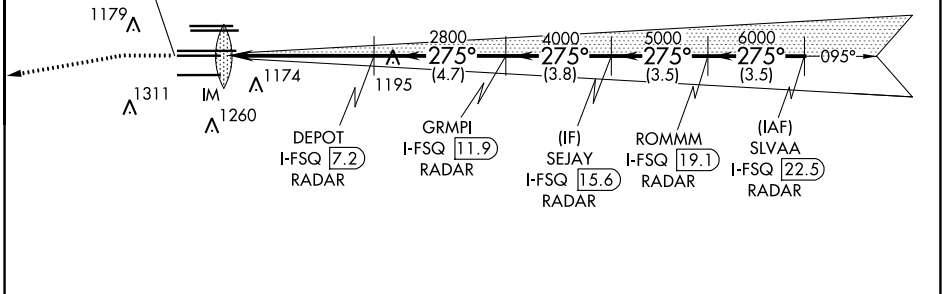
MISSED APPROACH: Climb to 1500 then climbing left turn to 4000 on heading 265° and RMG VORTAC R-165 to DUTIE/RMG 31.3 DME/RADAR and hold.

D-ATIS ARR 119.65	ATLANTA APP CON DEP 127.9 379.9	ATLANTA TOWER 8L-26R 8R-26L 9L-27R 9R-27L 10-28 RWYS					ALL RWYS	GND CON 10-28	ALL RWYS		
		119.1	125.325	123.85	119.3	119.5	254.4	121.9	121.75	121.65	254.4

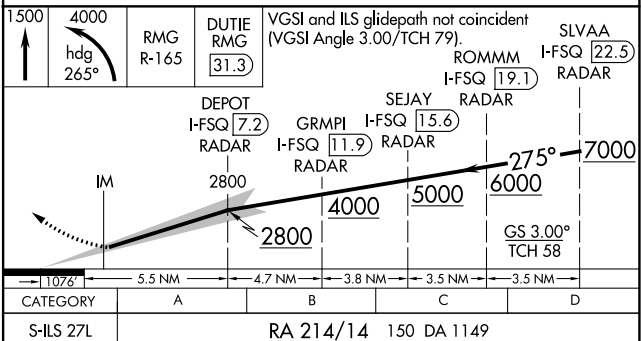
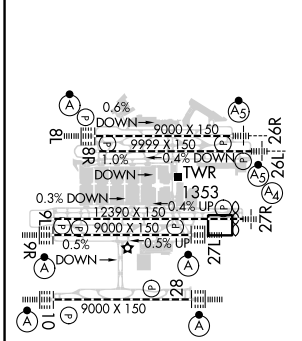


CLNC DEL 118.1	CPDLC
-----------------------------	-------

LOCALIZER 108.5 I-FSQ Chan 22
--



ELEV 1026	D	TDZE 999
-----------	----------	----------



SA CATEGORY I ILS- SPECIAL AIRCREW & AIRCRAFT CERTIFICATION REQUIRED

ATLANTA, GEORGIA
Amdt 19 22APR21

HARTSFIELD-JACKSON ATLANTA INTL (ATL)
33°38'N-84°26'W

ILS RWY 27L (SA CAT I)

SE-4, 16 MAY 2024 to 13 JUN 2024

SE-4, 16 MAY 2024 to 13 JUN 2024