

LOC/DME I-PKU 111.75 Chan 54(Y)	APP CRS 275°	Rwy ldg TDZE 998 Apt Elev 1026
---	------------------------	--

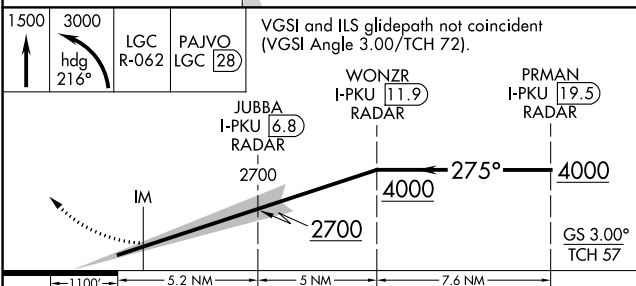
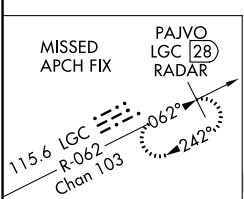
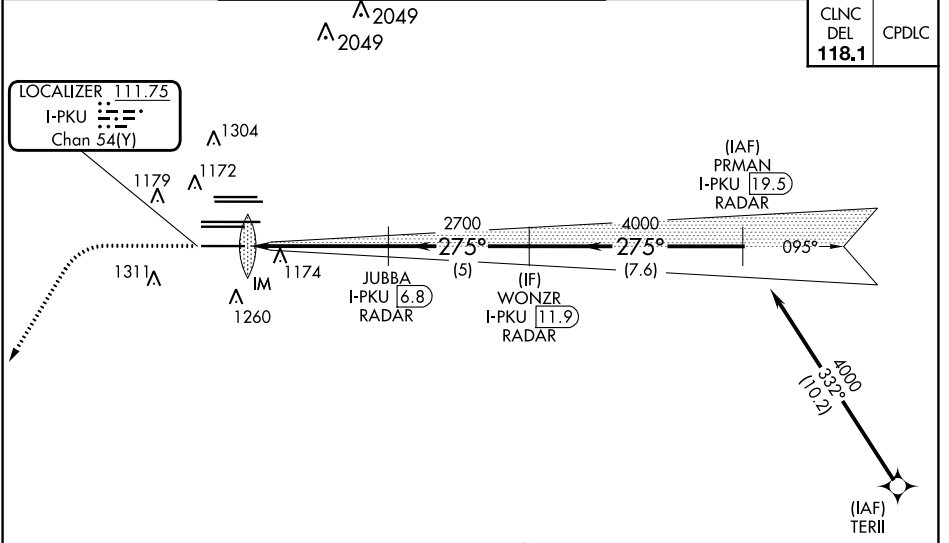
ILS RWY 28 (CAT II)

HARTSFIELD-JACKSON ATLANTA INTL (ATL)

RNAV 1-GPS or RADAR required for procedure entry. From TERII: RNAV 1-GPS required. DME or RADAR required.	ALSF-2 	MISSED APPROACH: Climb to 1500 then climbing left turn to 3000 on heading 216° and LGC VORTAC R-062 to PAJVO/LGC 28 DME/RADAR and hold.
Simultaneous approach authorized.		

D-ATIS ARR 119.65	ATLANTA APP CON	ATLANTA TOWER				ALL RWYS	GND CON	ALL RWYS
DEP 125.55	127.9 379.9	8L-26R	8R-26L	9L-27R	9R-27L	10-28	(8L-26R,8R-26L) (9L-27R,9R-27L)	10-28
		119.1	125.325	123.85	119.3	119.5	121.9	121.75
							121.65	121.65 254.4

CLNC DEL	CPDLC
118.1	



ELEV 1026	D	TDZE 998		
CATEGORY	A	B	C	D
S-ILS 28	RA 188/12		100 DA 1098	

CATEGORY II ILS - SPECIAL AIRCREW & AIRCRAFT CERTIFICATION REQUIRED

HIRL all Rwys
TDZ/CL Rwys 8L, 9R, 10, 26R, 27L and 28

The HIRL diagram shows various altitudes and frequencies for the runway. Key altitudes include 1353, 12390 X 1.5, 9999 X 1.5, 9000 X 1.5, and 271. Frequencies shown include 111.75, 119.1, 125.325, 123.85, 119.3, 119.5, 121.9, 121.75, 121.65, and 254.4.

SE-4, 16 MAY 2024 to 13 JUN 2024

SE-4, 16 MAY 2024 to 13 JUN 2024