

LOC/DME I-HFW 109.3 Chan 30	APP CRS 095°	Rwy Idg 8800 TDZE 1015 Apt Elev 1026
-------------------------------------------------	------------------------	-----------------------------------------------------------------

ILS RWY 8L (SA CAT I)

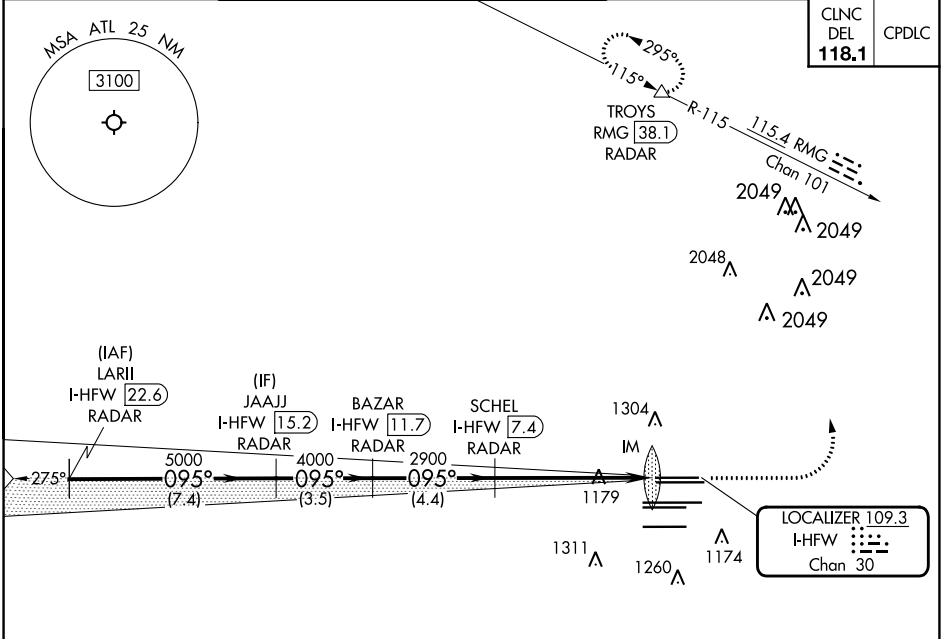
HARTSFIELD-JACKSON ATLANTA INTL (ATL)

RADAR required for procedure entry. DME or RADAR required. ALSF-2

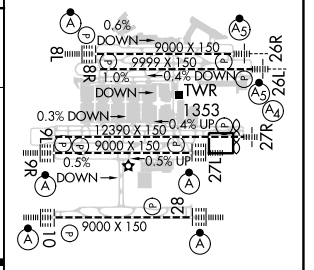
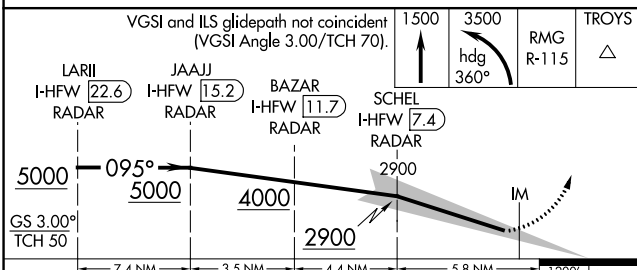
MISSED APPROACH: Climb to 1500 then climbing left turn to 3500 on heading 360° and RMG VORTAC R-115 to TROYS/RMG 38.1 DME/RADAR and hold.

Simultaneous approach authorized. Requires specific OPSPEC, MSPEC, or LOA approval.

D-ATIS ARR 119.65	ATLANTA APP CON DEP 127.9 379.9	ATLANTA TOWER 8L-26R 8R-26L 9L-27R 9R-27L 10-28 RWYS				ALL RWYS 119.3 119.5 254.4	GND CON (8L-26R,8R-26L) (9L-27R,9R-27L) 10-28	ALL RWYS 121.9 121.75 121.65 254.4
-----------------------------	----------------------------------------------	---------------------------------------------------------	--	--	--	-----------------------------------------	--------------------------------------------------	-------------------------------------------------



ELEV 1026	D	TDZE 1015
-----------	----------	-----------



CATEGORY	A	B	C	D
S-ILS 8L	RA 147/14 150 DA 1165			

SA CATEGORY I ILS - SPECIAL AIRCREW & AIRCRAFT CERTIFICATION REQUIRED

HIRL all Rwws
TDZ/CL Rwws 8L, 9R, 10, 26R, 27L and 28

SE-4, 16 MAY 2024 to 13 JUN 2024

SE-4, 16 MAY 2024 to 13 JUN 2024