

LOC/DME I-FUN 108.9 Chan 26	APP CRS 095°	Rwy Idg TDZE Apt Elev 9000 1026 1026
-------------------------------------------------	------------------------	--------------------------------------------------------------------------

ILS RWY 9R (CAT II & III)

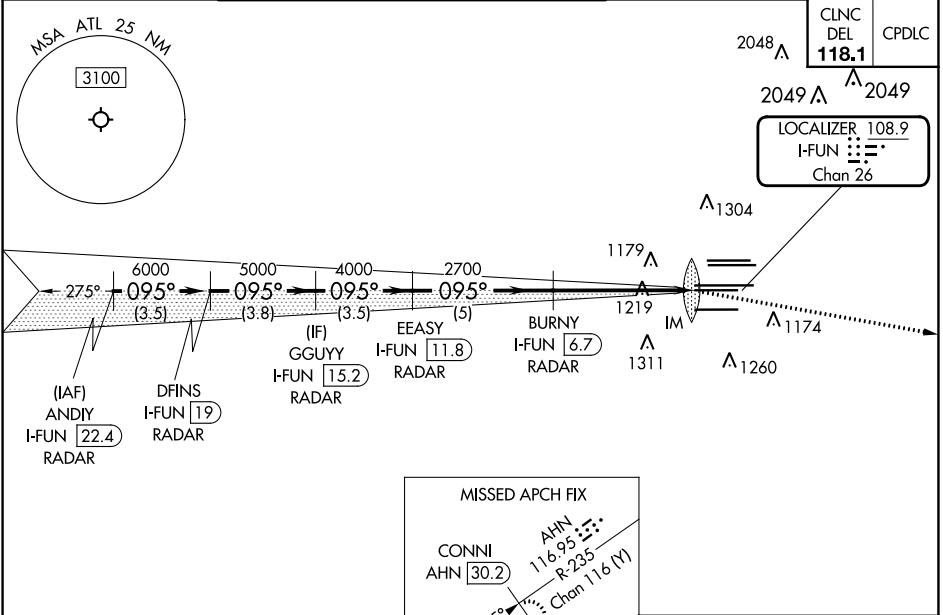
HARTSFIELD-JACKSON ATLANTA INTL (ATL)

RADAR required for procedure entry, DME.
 Simultaneous approach authorized.



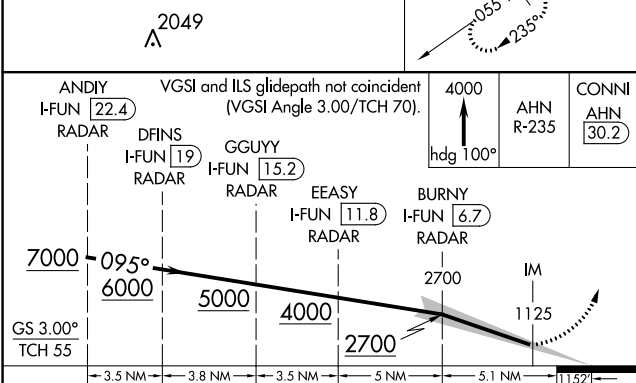
MISSED APPROACH: Climb to 4000 on heading 100° and AHN VOR/DME R-235 to CONNI/AHN 30.2 DME and hold.

D-ATIS ARR 119.65	ATLANTA APP CON 127.9 379.9	ATLANTA TOWER 8L-26R 8R-26L 9L-27R 9R-27L 10-28 RWYS				ALL RWYS 254.4	GND CON 121.9	ALL RWYS 254.4
DEP 125.55	127.9 379.9	119.1 125.325 123.85 119.3 119.5	254.4	121.9	121.75	121.65	254.4	

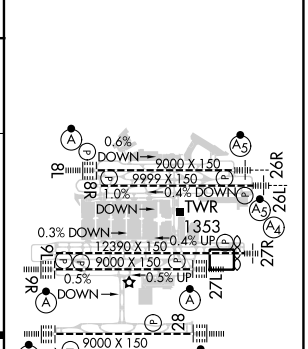


SE-4, 16 MAY 2024 to 13 JUN 2024

SE-4, 16 MAY 2024 to 13 JUN 2024



ELEV 1026	TDZE 1026
-----------	-----------



CATEGORY	A	B	C	D
S-ILS 9R	CAT II RA 118/12 100 DA 1126			
S-ILS 9R	CAT III RVR 03			

CATEGORY II & III ILS - SPECIAL AIRCREW & AIRCRAFT CERTIFICATION REQUIRED

HIRL all Rwws
TDZ/CL Rwws 8L,
9R, 10, 26R, 27L and 28