

LOC/DME I-FUN 108.9 Chan 26	APP CRS 095°	Rwy Idg TDZE Apt Elev 9000 1026 1026
---	------------------------	--

ILS RWY 9R (SA CAT I)

HARTSFIELD-JACKSON ATLANTA INTL (ATL)

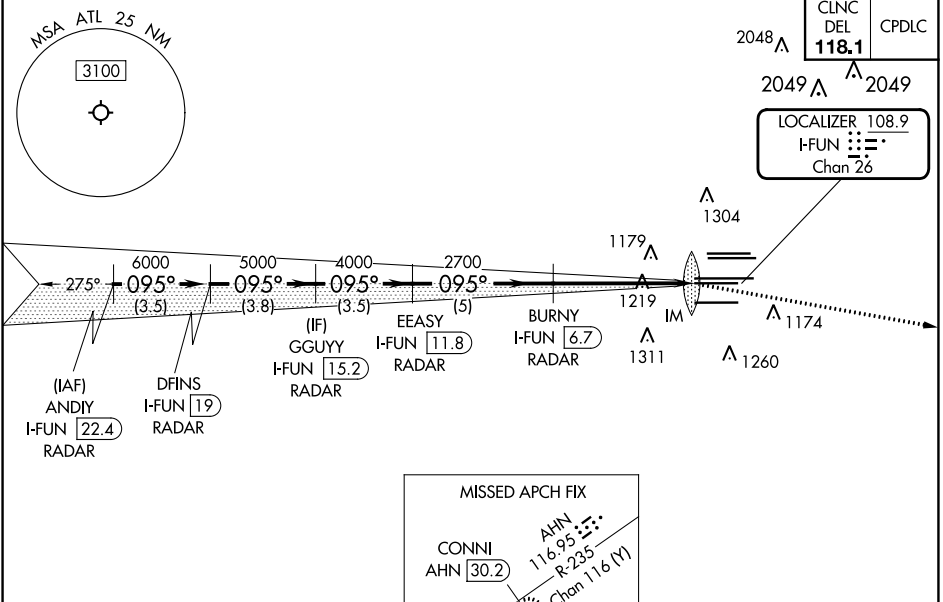
RADAR required for procedure entry, DME.

Simultaneous approach authorized.
Requires specific OPSPEC, MSPEC, or LOA approval.



MISSED APPROACH: Climb to 4000 on heading 100° and AHN VOR/DME R-235 to CONNI/AHN 30.2 DME and hold.

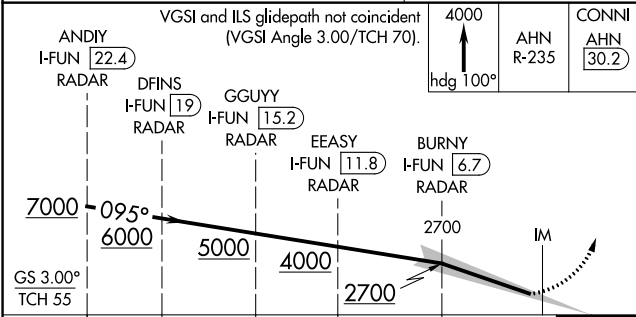
D-ATIS ARR 119.65	ATLANTA APP CON	ATLANTA TOWER				ALL RWYS	GND CON	ALL RWYS
DEP 125.55	127.9 379.9	8L-26R	8R-26L	9L-27R	9R-27L	10-28	(8L-26R, 8R-26L) (9L-27R, 9R-27L)	10-28
		119.1	125.325	123.85	119.3	119.5	254.4	121.9
								121.75
								121.65
								254.4



SE-4, 16 MAY 2024 to 13 JUN 2024

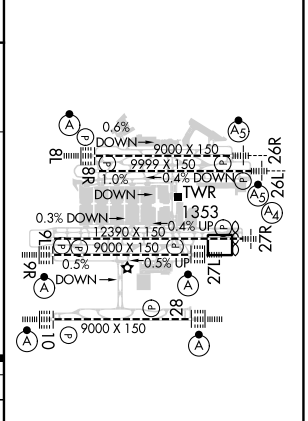
SE-4, 16 MAY 2024 to 13 JUN 2024

ELEV 1026	TDZE 1026
------------------	------------------



CATEGORY	A	B	C	D
S-ILS 9R	RA 196/14 150 DA 1176			

ELEV 1026	TDZE 1026
------------------	------------------



SA CATEGORY I ILS - SPECIAL AIRCREW & AIRCRAFT CERTIFICATION REQUIRED

HJRL all Rwy's
TDZ/CL Rwy's 8L, 9R, 10, 26R, 27L and 28